

MGate 5102-PBM-PN Series

1-port PROFIBUS-to-PROFINET gateways



Features and Benefits

- Protocol conversion between PROFIBUS and PROFINET
- Supports PROFINET IO device
- Supports PROFIBUS DP V1 master
- Automatic scan of PROFIBUS devices and easy configuration
- Web-based GUI for I/O data visualization
- Built-in Ethernet cascading for easy wiring
- microSD card for configuration backup/duplication and event logs
- Embedded I/O monitoring and diagnostic information for easy troubleshooting
- Status monitoring and fault protection for easy maintenance
- Supports redundant dual DC power inputs and 1 relay output
- -40 to 75°C wide operating temperature models available
- Serial port with 2 kV isolation protection
- Security features based on IEC 62443

Certifications

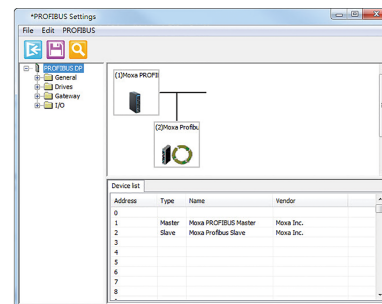


Introduction

The MGate 5102-PBM-PN gateway provides a communication portal between PROFIBUS devices (e.g., PROFIBUS PLC or drive) and the PROFINET host. All models are protected with a rugged metallic casing, DIN-rail mountable, and offer optional built-in optical isolation. The PROFIBUS and Ethernet status LED indicators are provided for easy maintenance. The rugged design is suitable for industrial applications such as oil and gas, power, process automation, and factory automation.

Easy Setup Tools

Both the Windows MGate Manager utility and web console support the AutoScan function, which makes configuration and operation easy. AutoScan automatically detects all connected PROFIBUS slave devices and their available I/O modules, allowing you to configure your gateways very quickly, and a data mapping table is provided. Furthermore, one click is all that's needed to export all PROFIBUS I/O modules to a GSDML file to assist in the configuration of the PROFINET controller (e.g., a Siemens PLC).



A Variety of Maintenance Functions

The MGate 5102-PBM-PN provides a web console and Telnet console for remote maintenance, with both consoles supporting encryption commutation functions such as HTTPS and SSH to prevent unauthorized access. The status and changes in I/O data of all PROFIBUS slaves can be monitored remotely via the web console, and users can also review the log from the web console to see which system events have occurred. A relay output alarm is provided for the power input and Ethernet cable status. These functions make it easy for maintenance engineers to troubleshoot and maintain devices.

Redundant Power Inputs

The MGate 5102-PBM-PN has dual power inputs for greater reliability. The power inputs allow simultaneous connection to 2 live DC power sources to provide uninterrupted operation even if one power source fails. The higher level of reliability makes these advanced PROFIBUS-master-to-PROFINET gateways ideal for demanding industrial applications.

Specifications

Ethernet Interface

10/100BaseT(X) Ports (RJ45 connector)	2 (auto MDI/MDI-X connection)
Magnetic Isolation Protection	1.5 kV (built-in)

Ethernet Software Features

Configuration Options	Web Console (HTTP/HTTPS), Device Search Utility (DSU), MGate Manager, Telnet Console
Management	ARP, DHCP Client, DNS, HTTP, HTTPS, SMTP, SNMP Trap, SNMPv1/v2c/v3, TCP/IP, Telnet, SSH, UDP, NTP Client
MIB	RFC1213, RFC1317
Time Management	NTP Client
Industrial Protocols	PROFINET IO Device

Serial Interface

Console Port	RS-232 (TxD, RxD, GND), 8-pin RJ45 (115200, n, 8, 1)
--------------	--

Serial Software Features

Configuration Options	Serial Console
Industrial Protocols	PROFIBUS DP-V1 Master

PROFIBUS Interface

Industrial Protocols	PROFIBUS DP
No. of Ports	1
Connector	DB9 female
Baudrate	9600 bps to 12 Mbps
Isolation	2 kV (built-in)
Signals	PROFIBUS D+, PROFIBUS D-, RTS, Signal Common, 5V

PROFIBUS

Mode	DP-V1 Master
Input Data Size	1024 bytes
Output Data Size	1024 bytes

PROFINET

Mode	IO Device
Max. No. of IO Controller Connections	1 (for read/write)
Input Data Size	1024 bytes
Output Data Size	1024 bytes

Memory

microSD Slot	Up to 32 GB (SD 2.0 compatible)
--------------	---------------------------------

Power Parameters

Input Voltage	12 to 48 VDC
Input Current	430 mA @ 12 VDC
Power Connector	Screw-fastened Euroblock terminal

Relays

Contact Current Rating	Resistive load: 2 A @ 30 VDC
------------------------	------------------------------

Physical Characteristics

Housing	Metal
IP Rating	IP30
Dimensions	36 x 105 x 140 mm (1.42 x 4.14 x 5.51 in)
Weight	500 g (1.10 lb)

Environmental Limits

Operating Temperature	MGate 5102-PBM-PN: 0 to 60°C (32 to 140°F) MGate 5102-PBM-PN-T: -40 to 75°C (-40 to 167°F)
Storage Temperature (package included)	-40 to 85°C (-40 to 185°F)
Ambient Relative Humidity	5 to 95% (non-condensing)

Standards and Certifications

Safety	EN 60950-1, UL 508
EMC	EN 55032/24
EMI	CISPR 32, FCC Part 15B Class B
EMS	IEC 61000-4-2 ESD: Contact: 8 kV; Air: 15 kV IEC 61000-4-3 RS: 80 MHz to 1 GHz: 10 V/m IEC 61000-4-4 EFT: Power: 4 kV; Signal: 2 kV IEC 61000-4-5 Surge: Power: 2 kV IEC 61000-4-6 CS: 150 kHz to 80 MHz: 10 V/m; Signal: 10 V/m IEC 61000-4-8 PFMF
Hazardous Locations	ATEX, Class I Division 2, IECEx
Freefall	IEC 60068-2-32
Shock	IEC 60068-2-27
Vibration	IEC 60068-2-6, IEC 60068-2-64

MTBF

Time	980,417 hrs
Standards	Telcordia SR332

Warranty

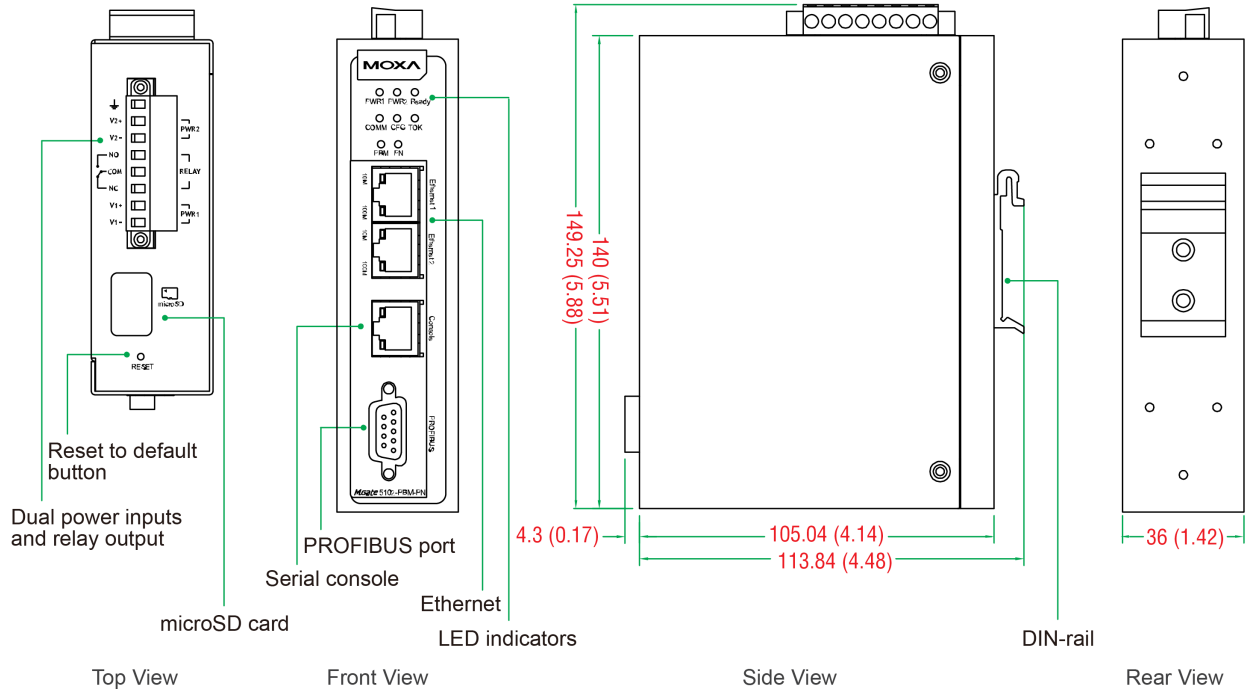
Warranty Period	5 years
Details	See www.moxa.com/warranty

Package Contents

Device	1 x MGate 5102-PBM-PN Series gateway
Installation Kit	1 x DIN-rail kit
Documentation	1 x quick installation guide 1 x warranty card

Dimensions

Unit: mm (inch)



Ordering Information

Model Name	Operating Temp.
MGate 5102-PBM-PN	0 to 60°C
MGate 5102-PBM-PN-T	-40 to 75°C

Accessories (sold separately)

Cables

CBL-F9M9-150	DB9 female to DB9 male serial cable, 1.5 m
CBL-F9M9-20	DB9 female to DB9 male serial cable, 20 cm
CBL-RJ45F9-150	RJ45 to DB9 female serial cable, 1.5 m
CBL-RJ45SF9-150	RJ45 to DB9 female serial shielded cable, 1.5 m

Connectors

Mini DB9F-to-TB	DB9 female to terminal block connector
-----------------	--

DIN-Rail Mounting Kits

DK-25-01	DIN-rail mounting kit, 2 screws
----------	---------------------------------

Wall-Mounting Kits

WK-36-02	Wall-mounting kit, 2 plates, 6 screws, 36 x 67 x 2 mm
----------	---

Power Cords

CBL-PJTB-10

Non-locking barrel plug to bare-wire cable

© Moxa Inc. All rights reserved. Updated Nov 07, 2019.

This document and any portion thereof may not be reproduced or used in any manner whatsoever without the express written permission of Moxa Inc. Product specifications subject to change without notice. Visit our website for the most up-to-date product information.