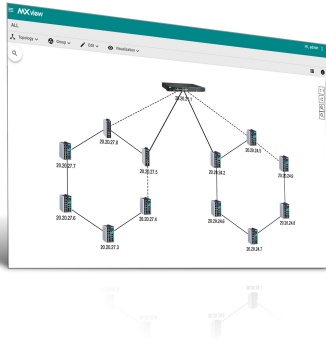


MXview Series

Industrial network management software designed for converged automation networks



Features and Benefits

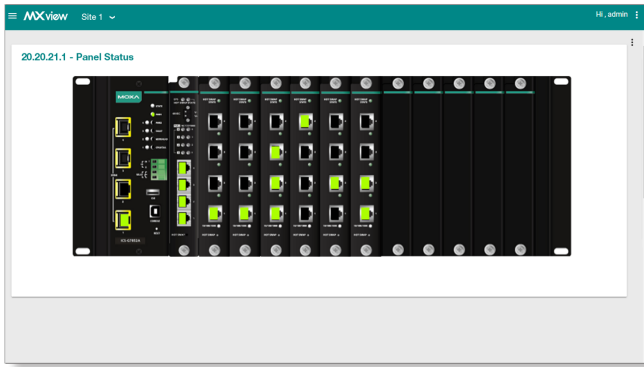
- Discovers and visualizes network devices and physical connections automatically
- Central management of configurations and firmware for Moxa devices
- Multiple options for events and notifications with self-defined threshold and duration
- Supports third-party devices with MIB compiler and MIB browser
- Comprehensive reports, including inventory, traffic, and availability reports
- Generates OPC 2.0 compliant tags automatically to integrate with SCADA/HMI applications
- Provides a virtual demonstration network that lets you experience the software without connecting any devices
- Supports MXview ToGo mobile app for remote monitoring and notifications—anytime, anywhere
- Provides RESTful API and web widget to embed MXview into industrial applications

Introduction

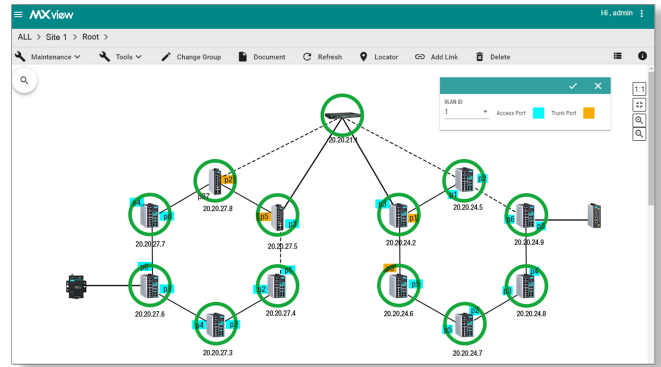
Moxa's MXview network management software is designed for configuring, monitoring, and diagnosing networking devices in industrial networks. MXview provides an integrated management platform that can discover networking devices and SNMP/IP devices installed on subnets. All selected network components can be managed via a web browser from both local and remote sites—anytime and anywhere.

Visualization

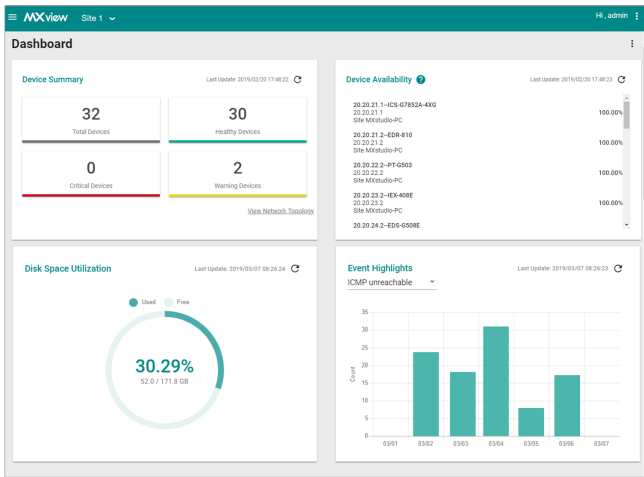
- Discovers up to 2,000 Moxa devices and SNMP/ICMP devices within scan range
- Visualization of redundant link status and device roles of network redundancy protocols
- Visualization of graphic VLAN groups
- Security view for the security status of network devices with industrial security standard
- Visualization of network traffic loading with color-coded links
- Device front panel visualization, including ports and LED indicators
- Visualization of managed PoE device power consumption
- Wireless dashboard shows relationship between wireless APs and Clients
- Displays third-party device icons
- A network management dashboard to view the network status quickly



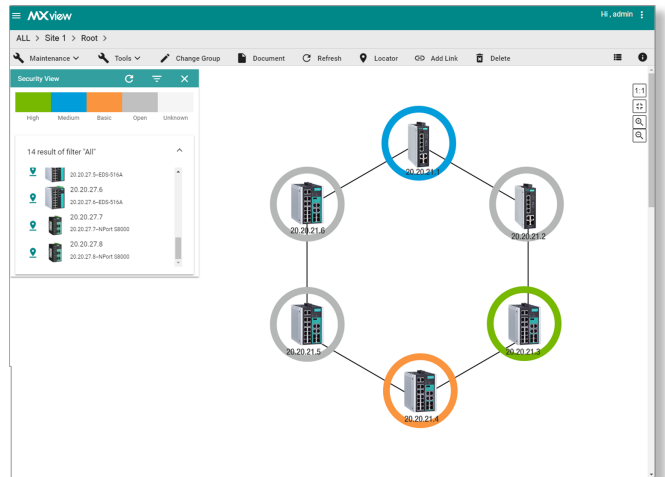
Virtual Device Panel



VLAN Visualization



Dashboard



Security View

Network Diagnostics and Event Notification

- Detect problems in real time with SNMP trap/inform, or periodic polling
- Generate trend graphs to track bandwidth utilization and error packet rate statistics, accurate to four decimal places
- Supports Syslog server for centralized message management
- Configurable event notification alarms sent through email and SNMP trap, or locally through program notification, message box, and audio alerts
- Multiple options for events and notifications with self-defined threshold and duration

- Generate OPC 2.0 compliant tags automatically to integrate with SCADA/HMI applications
- Group health OPC tag represents entire network status
- Real-time device availability monitoring
- Supports third-party devices with MIB compiler and MIB browser
- Collaborate with third-party NMS through SNMP traps
- Provides RESTful API and web widget for integrating MXview into the existing system

Comprehensive Reports

- Maintain device availability reports and record for up to 90 days
- Generate an inventory report for each device on the network

- Compile comprehensive device properties report
- Generate network traffic trend reports

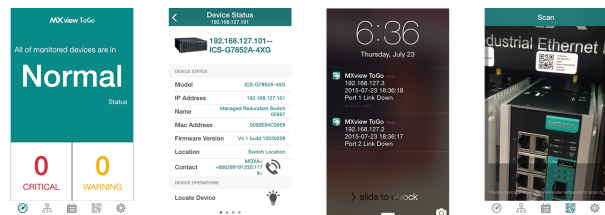
Centralized Configuration and Firmware Management

- Bulk deployment of device configurations and firmware
- In one click, back up the entire MXview database, including topology, job scheduling, events, and device properties

- Scheduling for periodic configuration backup
- Save history of configuration changes
- Comparison tool for checking differences between 2 configurations

Mobile App for Network Monitoring

- MXview ToGo mobile app for remote monitoring and notification—anytime, anywhere
- Smart Device Identification with QR Code enhances operational efficiency
- Device Locator with mobile app reduces searching time at field sites



Specifications

Hardware Requirements

| | |
|---------------------|---|
| CPU | 2 GHz or faster dual-core CPU |
| RAM | 4 GB |
| Hardware Disk Space | 10 GB |
| OS | Windows 10 (64-bit), Windows Server 2016 (64-bit), Windows 7 with Service Pack 1 (64-bit), Windows Server 2012 R2 (64-bit) |

System Requirements

Supported Devices

| | Supported Devices | |
|------------|-----------------------|---------------|
| Series | Model Name | Firmware Ver. |
| AWK Series | AWK-1121 | V1.4 |
| | AWK-1127 | V1.4 |
| | AWK-1131A | V1.11 |
| | AWK-1137C | V1.1 |
| | AWK-3121 | V1.6 |
| | AWK-3131 | V1.1 |
| | AWK-3131A | V1.3 |
| | AWK-3131A-M12-RTG | V1.8 |
| | AWK-4121 | V1.6 |
| | AWK-4131 | V1.1 |
| | AWK-4131A | V1.3 |
| WAC Series | WAC-1001 | V2.1 |
| | WAC-2004 | V1.6 |
| EDR Series | EDR-G903 | V2.1 |
| | EDR-G902 | V1.0 |
| | EDR-810 | V3.2 |
| EDS Series | EDS-405A/408A | V2.6 |
| | EDS-405A/408A-EIP | V3.0 |
| | EDS-405A/408A-PN | V3.1 |
| | EDS-405A-PTP | V3.3 |
| | EDS-505A/508A/516A | V2.6 |
| | EDS-510A | V2.6 |
| | EDS-518A | V2.6 |
| | EDS-510E/518E | V4.0 |
| | EDS-528E | V5.0 |
| | EDS-G508E/G512E/G516E | V4.0 |
| | EDS-G512E-8PoE | V4.0 |
| | EDS-608/611/616/619 | V1.1 |

| | Supported Devices | |
|----------------|--------------------------|---------------|
| Series | Model Name | Firmware Ver. |
| | EDS-728 | V2.6 |
| | EDS-828 | V2.6 |
| | EDS-G509 | V2.6 |
| | EDS-P510 | V2.6 |
| | EDS-P510A-8PoE | V3.1 |
| | EDS-P506A-4PoE | V2.6 |
| | EDS-P506 | V5.5 |
| EOM Series | EOM-104/104-FO | V1.2 |
| ICS Series | ICS-G7526/G7528 | V1.0 |
| | ICS-G7826/G7828 | V1.1 |
| | ICS-G7748/G7750/G7752 | V1.2 |
| | ICS-G7848/G7850/G7852 | V1.2 |
| | ICS-G7526A/G7528A | V4.0 |
| | ICS-G7826A/G7828A | V4.0 |
| | ICS-G7748A/G7750A/G7752A | V4.0 |
| | ICS-G7848A/G7850A/G7852A | V4.0 |
| IEX Series | IEX-402-SHDSL | V1.0 |
| | IEX-402-VDSL2 | V1.0 |
| | IEX-408E-2VDSL2 | V4.0 |
| IKS Series | IKS-6726/6728 | V2.6 |
| | IKS-6524/6526 | V2.6 |
| | IKS-G6524 | V1.0 |
| | IKS-G6824 | V1.1 |
| | IKS-6728-8PoE | V3.1 |
| | IKS-6726A/6728A | V4.0 |
| | IKS-G6524A | V4.0 |
| | IKS-G6824A | V4.0 |
| | IKS-6728A-8PoE | V4.0 |
| ioLogik Series | ioLogik E2210 | V3.7 |
| | ioLogik E2212 | V3.7 |
| | ioLogik E2214 | V3.7 |
| | ioLogik E2240 | V3.7 |
| | ioLogik E2242 | V3.7 |
| | ioLogik E2260 | V3.7 |
| | ioLogik E2262 | V3.7 |
| | ioLogik W5312 | V1.7 |
| | ioLogik W5340 | V1.8 |

| | Supported Devices | |
|------------------------------|-------------------|---------------|
| Series | Model Name | Firmware Ver. |
| MDS Series | MDS-G4012 | V1.0 |
| | MDS-G4020 | V1.0 |
| | MDS-G4028 | V1.0 |
| MGate Series | MGate MB3170 | V1.0 |
| | MGate MB3180 | V1.0 |
| | MGate MB3270 | V1.0 |
| | MGate MB3280 | V1.0 |
| | MGate MB3480 | V1.0 |
| | MGate MB3660 | V1.0 |
| | MGate EIP3170 | V1.0 |
| | MGate EIP3270 | V1.0 |
| | MGate 5101-PBM-MN | V1.1 |
| | MGate 5102-PBM-PN | V1.1 |
| | MGate 5105-MB-EIP | V1.0 |
| | MGate 5109 | V1.3 |
| | MGate 5114 | V1.2 |
| | MGate 5118 | V1.0 |
| | MGate W5108 | V1.2 |
| | MGate W5208 | V1.2 |
| | NPort Series | NPort S8455 |
| NPort S8458 | | V1.3 |
| NPort 5110 | | V2.4 |
| NPort 5130/5150 | | V3.4 |
| NPort 5210/5230/5232 | | V2.6 |
| NPort 5410/5430/5450 | | V3.9 |
| NPort 5600-8-DT/5650-8-DT | | V2.2 |
| NPort 5600 | | V3.5 |
| NPort 5610-8-DTL/5650-8-DTL | | V1.1 |
| NPort 5110A/5130A/5150A | | V1.1 |
| NPort 5210A/5230A/5250A | | V1.1 |
| NPort IA5150/IA5250 | | V1.4 |
| NPort IA5150A/IA5250A | | V1.1 |
| NPort IA5450A | | V1.2 |
| NPort 6150/6250/6450 | | V1.9 |
| NPort 6610-8/6610-16/6610-32 | | V1.9 |
| NPort 6650-8/6650-16/6650-32 | | V1.9 |

| Series | Supported Devices | |
|--------------|-------------------|---------------|
| | Model Name | Firmware Ver. |
| | NPort 5150AI-M12 | V1.0 |
| | NPort 5250AI-M12 | V1.0 |
| | NPort 5450AI-M12 | V1.0 |
| PT Series | PT-7528 | V3.0 |
| | PT-7710 | V1.2 |
| | PT-7728 | V2.6 |
| | PT-7828 | V2.6 |
| | PT-G7509 | V1.1 |
| | PT-508/510 | V3.0 |
| | PT-G503-PHR-PTP | V4.0 |
| | PT-G7728 | V5.3 |
| | PT-G7828 | V5.3 |
| TAP Series | TAP-213 | V1.2 |
| | TAP-323 | V1.8 |
| | TAP-6226 | V1.8 |
| TN Series | TN-4516A | V3.6 |
| | TN-4516A-POE | V3.6 |
| | TN-4524A-POE | V3.6 |
| | TN-4528A-POE | V3.8 |
| | TN-G4516-POE | V5.0 |
| | TN-G6512-POE | V5.2 |
| | TN-5508/5510 | V1.1 |
| | TN-5516/5518 | V1.2 |
| | TN-5508-4PoE | V2.6 |
| TN-5516-8PoE | V2.6 | |
| UC Series | UC-2101-LX | V1.7 |
| | UC-2102-LX | V1.7 |
| | UC-2104-LX | V1.7 |
| | UC-2111-LX | V1.7 |
| | UC-2112-LX | V1.7 |
| | UC-2112-T-LX | V1.7 |
| | UC-2114-T-LX | V1.7 |
| | UC-2116-T-LX | V1.7 |
| VPort Series | VPort 26A-1MP | V1.2 |
| | VPort 36-1MP | V1.1 |
| | VPort P06-1MP-M12 | V2.2 |

Note: MXview supports the listed or higher firmware versions.

| | Supported Devices | |
|---|-------------------|------------|
| | Series | Model Name |
| <p>Note: Additional model names will be added as MXview is updated. Check Moxa's website for the most up-to-date information.</p> | | |

Package Contents

| | |
|---------------------------|---|
| Number of Supported Nodes | Up to 2000 (may require purchase of expansion licenses) |
|---------------------------|---|

Ordering Information

| Model Name | No. of Supported Nodes | License Expansion |
|-------------------|------------------------|-------------------|
| MXview-50 | 50 | - |
| MXview-100 | 100 | - |
| MXview-250 | 250 | - |
| MXview-500 | 500 | - |
| MXview-1000 | 1000 | - |
| MXview-2000 | 2000 | - |
| MXview Upgrade-50 | 0 | 50 nodes |

© Moxa Inc. All rights reserved. Updated Feb 01, 2021.

This document and any portion thereof may not be reproduced or used in any manner whatsoever without the express written permission of Moxa Inc. Product specifications subject to change without notice. Visit our website for the most up-to-date product information.