



UPort 2000 Series USB-to-Serial Converter Quick Installation Guide

First Edition, May 2008

1. Overview

UPort is the brand name of Moxa's USB-to-serial product line, which provides a wide range of products and solutions to extend Windows COM ports using the PC's USB port. Important features of UPort products include support for Hi-Speed (480 Mbps) USB 2.0, Moxa CPU, Moxa UART, and the ability to assign COM port numbers. These features make Moxa's UPort products easy to use and maintain.

The UPort 2000 Series of USB-to-Serial Converter includes the following models:

- UPort 2210 2-port RS-232 USB-to-Serial Converter
- UPort 2410 4-port RS-232 USB-to-Serial Converter

Before connecting the UPort USB-to-Serial Converters to your computer's USB port, we recommend installing the UPort driver first. To do this, follow the installation procedure described in Section 3.

The installation procedure described in Section 3 was done on a PC running Windows XP system. Windows 2000, 2003, Vista (32-bit and 64-bit) drivers are installed in the same. UPort converters can be connected to any upstream type **A** USB port that is on the PC host or on an upstream hub. UPort converters are hot pluggable, and therefore there is no need to power down your computer prior to installation.

After installing the driver, connect the UPort to an upstream host or hub. The **Found New Hardware** wizard will locate the appropriate drivers automatically. Once the drivers are found, various windows will pop up as the UPort's serial port is being installed.

When the **Found New Hardware wizard** finishes installing the UPort, use the operating system's Device Manager to check and/or modify the port settings. The new COM port will be listed under Ports (COM & LPT).

2. Package Checklist

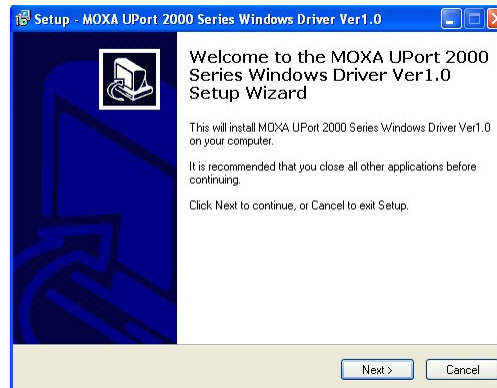
Before installing your UPort, verify that the package contains the following items:

- UPort 2210 or USB 2410 USB-to-serial converter
- 1 USB cable
- Document and Software CD
- UPort 2000 series Quick Installation Guide

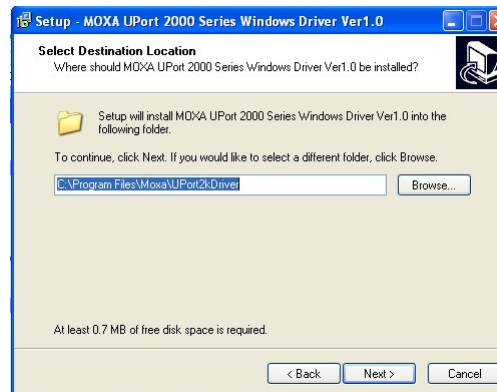
Notify your sales representative if any of the above items are missing or damaged.

3. Installing the UPort 2000 Series Driver

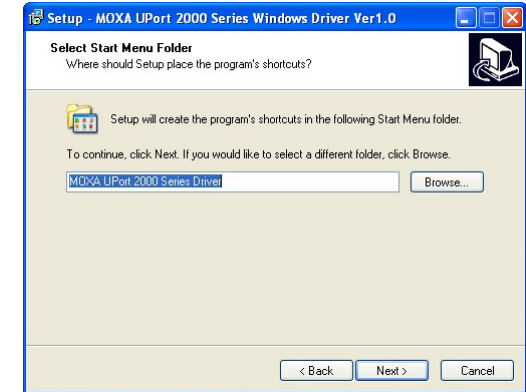
1. Run the Setup program located on the UPort 2000 Series Document and Software CD-ROM. Click **Next** to start installing the driver.



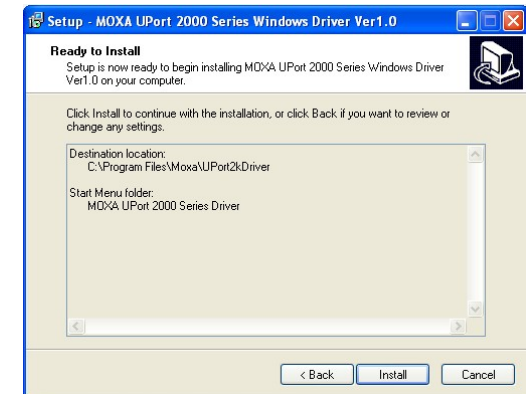
2. Click **Next** to install the driver in the indicated folder.



3. Click **Install** to proceed with the installation.



4. The window that opens next cautions you that although this software has not passed Windows logo testing, this driver has already been tested and shown that it can support the Windows OS. Click **Continue Anyway** to proceed and then click **Finish** to complete the driver installation.



P/N: 1802020000010

4. Installing the UPort 2000 Series Hardware

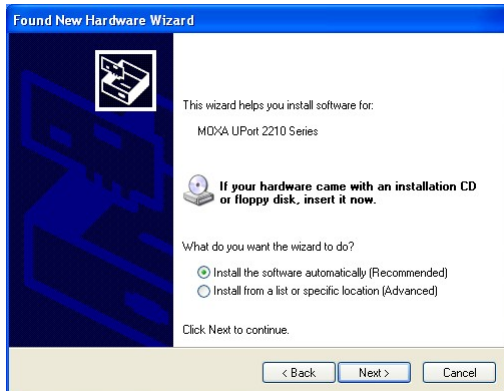
WARNING

1. This unit is not meant to be sold to consumers. It will only be shipped to manufacturers or factories.
2. This unit should be installed or set up by a qualified service technician.

1. Connect the UPort to the PC using the USB cable.
2. After powering on your PC, Windows 2000/XP/2003/Vista will automatically detect the UPort.
3. Click **Next** to start the installation.



4. Select **Install the software automatically (Recommended)**.



5. The next window that opens cautions you that although this software has not passed Windows logo testing, this driver has already been tested and shown that it can support Windows OS. Click **Continue Anyway** to proceed. Then, click **Finish** to complete the driver installation.



6. Repeat steps 3 to 5 until all COM ports have been installed.

5. Installing the Linux Driver

Obtain the driver file from the Document and Software CD, or from the Moxa website at <http://www.moxa.com>. To install and load the Linux drivers, execute the following commands from the Linux prompt:

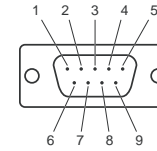
```
# mount /dev/cdrom /mnt
# cd /
# mkdir moxa
# cd /moxa
# cp /mnt/cdrom/<driver
directory>/driv_linux2.6_uport2000_vx.x_build_yymmddhh.tgz /moxa
# tar -xvzf driv_linux2.6_uport2000_vx.x_build_yymmddhh.tgz
# cd /moxa/mxuport2000
# make clean
# make install
# modprobe mxuport2000
```

*Note: xx=version, yy = year, mm = month, dd = day, hh = hour

6. Serial Port Pin Assignments

The serial ports on the UPort 2000 use male DB9 connectors. Refer to the following table for the RS-232 pin assignments.

Male DB9



Pin	RS-232
1	DCD
2	RxD
3	TxD
4	DTR
5	GND
6	DSR
7	RTS
8	CTS

Power Input Specifications

The UPort 2210 and UPort 2410 both support 5 VDC bus power.

MOXA®

Click here for online support:
www.moxa.com/support

The Americas: +1-714-528-6777 (toll-free: 1-888-669-2872)
China: +86-21-5258-9955 (toll-free: 800-820-5036)
Europe: +49-89-3 70 03 99-0
Asia-Pacific: +886-2-8919-1230

© 2008 Moxa Inc., all rights reserved.
Reproduction without permission is prohibited.