

MXview ToGo Quick Installation Guide

First Edition, July 2015



© 2015 Moxa Inc. All rights reserved.

P/N: 1802000000C0

Overview

MXview ToGo allows you to use your mobile devices to monitor network devices that are managed by Moxa's MXview industrial network management software. With **MXview ToGo**, you can view network status and system events anytime, anywhere. When your MXview server is connected to the Internet, you can receive real-time notifications on your mobile devices.

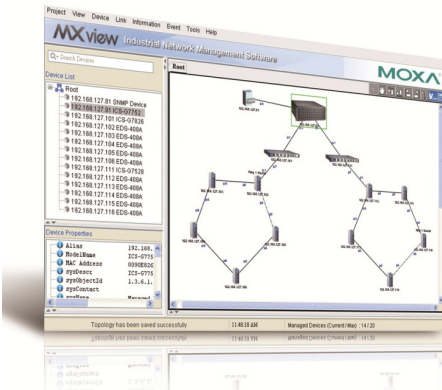
MXview ToGo enables you to respond to abnormal network events the moment they occur and helps to minimize system downtime



MXview ToGo Requirements

Device	Operating System	Storage
iPhone	iOS 8.0 or later	20 MB
Android phone/tablet	Android 4.0.3 or later	20 MB

MXview Server Requirements

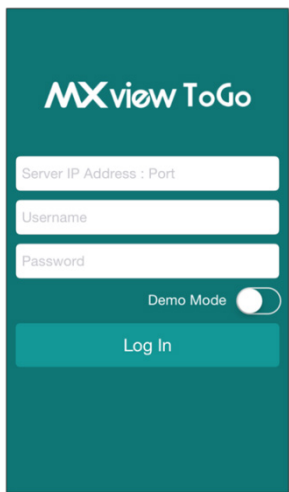


- [MXview version 2.6 or later](#)
- Internet connection for push notifications

Installation

1. Install and configure MXview on a server in your network. For more information, see the documentation that comes with MXview.
2. On your mobile device, download and install MXview ToGo from the Apple App Store or Google Play.

Logging In



On the **Log In** page, enter the following information and click **Log In** to log in to MXview ToGo and connect to your MXview server.

- IP address of your MXview server
- Username
- Password

Tip: To try **MXview ToGo** without connecting to an MXview server, enable **Demo Mode**.

Logging Out

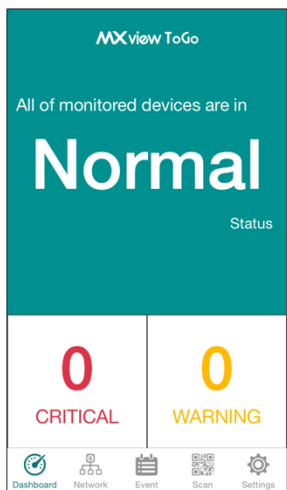
To log out of MXview ToGo and disconnect from your MXview server, tap **Settings > Log Out**.

MXview ToGo Functions

In this section, we describe the functionality provided by the five buttons at the bottom of the MXview ToGo panel:

1. Dashboard
2. Network
3. Event
4. Scan
5. Settings

1. Dashboard



The **Dashboard** page displays the number of monitored devices for the following network statuses:

- **Normal:** Devices are operating normally.
- **Warning:** Devices are operating but with warning status.
- **Critical:** Devices are operating with critical issues or may not be operating. Immediate attention is required.

Tap a number to view devices with a **Warning** or **Critical** status.

2. Network



The **Network** page displays network groups and devices on your MXview network.

To view detailed device information, tap a device.


Swipe left to view detailed information pages for a device.

- **Device Status**



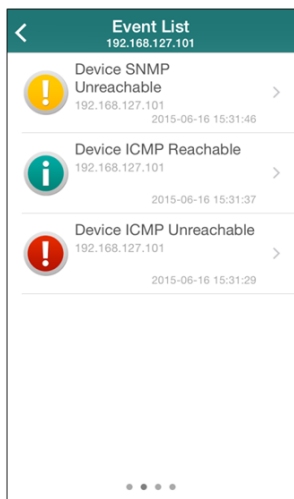
The **Device Status** page displays basic device information (such as IP address and firmware version).

To locate a device, tap .

To contact the administrator of a managed device, tap .

NOTE You can set the administrator contact information on each device.

- **Event List**



You can view the latest 100 event logs for a device on the **Event List** page.

To view detailed log information, tap an event.

- **Device Properties**

Device Properties	
192.168.127.101	
activeProtocolOfRedundancy	None
Alias	192.168.127.101--ICS-G7852A-4XG
cpuLoading300s.0	11
cpuLoading30s.0	10
cpuLoading5s.0	6
defaultGateway	0.0.0.0
dnsServer1IpAddr	0.0.0.0
dnsServer2IpAddr	0.0.0.0
enableAutoIpConfig	0
firmwareVersion	V4.1 build 15030209
ifNumber	310
IpAddr	192.168.127.101
IpAddress	192.168.127.101

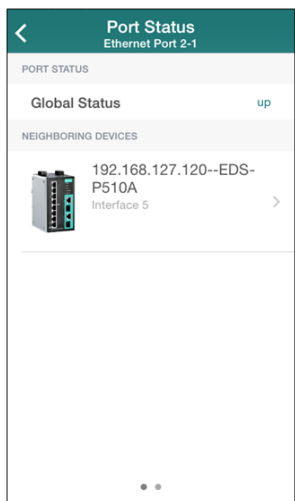
The **Device Properties** page displays detailed device information on the MXview server.

- **Device Port**

Device Port	
192.168.127.101	
Ethernet Port 1-1	down >
Ethernet Port 1-2	down >
Ethernet Port 1-3	down >
Ethernet Port 1-4	down >
Ethernet Port 2-1	up >
Ethernet Port 2-2	down >

The **Device Port** page displays the name and status of each port on a device.

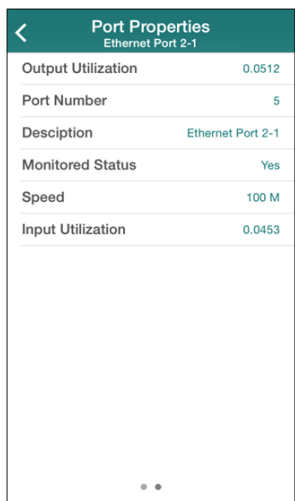
- **Port Status**



You can access the **Port Status** page to view:

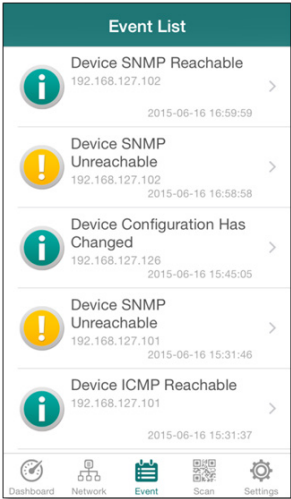
- Whether a port is up or down
- The information of its neighboring devices

- **Port Properties**



The **Port Properties** page displays detailed port information (such as the port number and speed).

3. Event



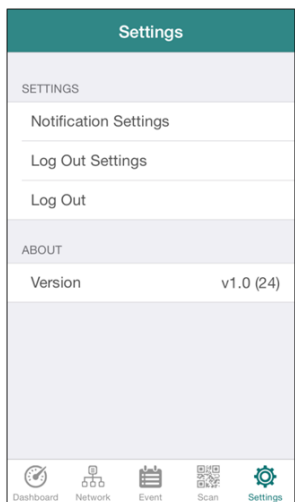
The **Event List** page displays the latest 100 event logs for all devices on the MXview server.

4. Scan



To view the status of a device on MXview ToGo, use the **Scan** page to scan the QR code on a Moxa device managed by the MXview server. The Device Status page is displayed.

5. Settings



Use the **Settings** page to configure notification and logout settings.

Notification Settings: Enter your email address, which you can use to configure push notifications on the MXview server.

Logout Settings: Configure the default session inactivity timeout (between 10 to 60 minutes).

Technical Support Contact Information www.moxa.com/support

Moxa Americas:

Toll-free: 1-888-669-2872

Tel: 1-714-528-6777

Fax: 1-714-528-6778

Moxa China (Shanghai office):

Toll-free: 800-820-5036

Tel: +86-21-5258-9955

Fax: +86-21-5258-5505

Moxa Europe:

Tel: +49-89-3 70 03 99-0

Fax: +49-89-3 70 03 99-99

Moxa Asia-Pacific:

Tel: +886-2-8919-1230

Fax: +886-2-8919-1231