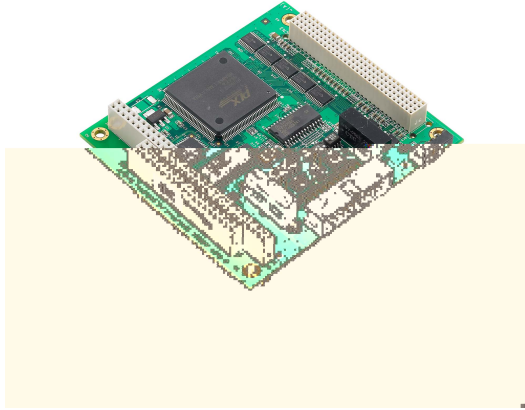


CB-602I Series

2-port CAN interface PC/104-Plus modules with 2 kV isolation



Features and Benefits

- Supports CAN 2.0A and CAN 2.0B
- Two independent CAN communication ports
- CAN transfer rate up to 1 Mbps
- 2 kV electrical isolation
- LED for transmit/receive status on each port
- Optional 120-ohm terminal resistor for CAN bus network
- DLL library and examples included
- Windows drivers provided

Certifications



Introduction

Moxa's CB-602I CAN (Controller Area Network) interface boards support the PC/104-Plus interface. Optional DB9 and DB25 connection cables are available for connecting to CAN interface devices. The CB-602I CAN interface boards use the NXP SJA1000 and PCA82C251 transceiver, which provide bus arbitration and error detection. The -40 to 85°C wide operating temperature (CB-602I-T only) and 2 kV isolation make the boards suitable for use in harsh industrial environments.

Specifications

Serial Interface

Isolation	2 kV
Max. No. of Boards per PC	8

CAN Interface

Baudrate	10/20/50/125/250/500/800/1000 kbps, user-defined
Connector	20-pin box header
No. of Ports	2

Environmental Limits

Operating Temperature	Standard Models: 0 to 55°C (32 to 131°F) Wide Temp. Models: -40 to 85°C (-40 to 185°F)
Storage Temperature (package included)	-40 to 85°C (-40 to 185°F)
Ambient Relative Humidity	5 to 95% (non-condensing)

Standards and Certifications

EMC	EN 55032/24
EMI	CISPR 32, FCC Part 15B Class B
EMS	IEC 61000-4-2 ESD: Contact: 4 kV; Air: 8 kV IEC 61000-4-3 RS: 80 MHz to 1 GHz: 3 V/m IEC 61000-4-4 EFT: Power: 1 kV IEC 61000-4-5 Surge: Power: 2 kV; Signal: 2 kV IEC 61000-4-6 CS: 150 kHz to 80 MHz: 3 V/m; Signal: 3 V/m IEC 61000-4-8 PFMF IEC 61000-4-11 DIPs

Declaration

Green Product	RoHS, CRoHS, WEEE
---------------	-------------------

MTBF

Time	248,563 hrs
Standards	Telcordia (Bellcore), GB

Warranty

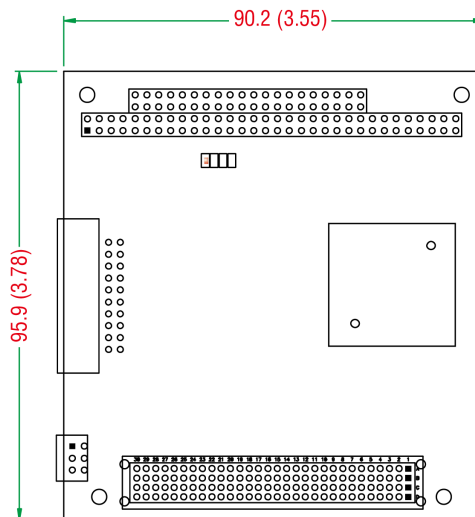
Warranty Period	5 years
Details	See www.moxa.com/warranty

Package Contents

Device	1 x CB-602I Series PC/104-Plus module
Documentation	1 x document and software CD 1 x substance disclosure table 1 x warranty card

Dimensions

Unit: mm (inch)



Ordering Information

Model Name	Serial Bus	CAN Specification	No. of Serial Ports	Serial Isolation Protection	Operating Temp.
CB-602I w/o Cable	PC/104-Plus	CAN 2.0 A/B	2	2 kV	0 to 55°C
CB-602I-T w/o Cable	PC/104-Plus	CAN 2.0 A/B	2	2 kV	-40 to 85°C

Accessories (sold separately)

Cables

CBL-F20M9x2-50	F20 to 2 x DB9 male cable, 50 cm
CBL-F20M25x2-50	F20 to 2 x DB25 male cable, 50 cm

© Moxa Inc. All rights reserved. Updated Jan 18, 2018.

This document and any portion thereof may not be reproduced or used in any manner whatsoever without the express written permission of Moxa Inc. Product specifications subject to change without notice. Visit our website for the most up-to-date product information.