

NPort 1220/1240 USB-to-Serial Hub User's Manual

Third Edition, November 2005

www.moxa.com/product



Moxa Technologies Co., Ltd.

Tel: +886-2-8919-1230

Fax: +886-2-8919-1231

Web: www.moxa.com

MOXA Technical Support

Worldwide: support@moxa.com.tw

The Americas: support@moxa.com

NPort 1220/1240 USB-to-Serial Hub User's Manual

The software described in this manual is furnished under a license agreement and may be used only in accordance with the terms of that agreement.

Copyright Notice

Copyright © 2005 Moxa Technologies Co., Ltd.
All rights reserved.
Reproduction without permission is prohibited.

Trademarks

MOXA is a registered trademark of the Moxa Group.
All other trademarks or registered marks in this manual belong to their respective manufacturers.

Disclaimer

Information in this document is subject to change without notice and does not represent a commitment on the part of Moxa.

Moxa provides this document "as is," without warranty of any kind, either expressed or implied, including, but not limited to, its particular purpose. Moxa reserves the right to make improvements and/or changes to this manual, or to the products and/or the programs described in this manual, at any time.

Information provided in this manual is intended to be accurate and reliable. However, Moxa assumes no responsibility for its use, or for any infringements on the rights of third parties that may result from its use.

This manual might include unintentional technical or typographical errors. Changes are made periodically to the information herein to correct such errors, and these changes are incorporated into new editions of the manual.

Table of Contents

Chapter 1	Introduction	1-1
	Overview	1-2
	Package Checklist	1-2
	Product Features	1-2
	Product Specifications	1-3
	NPort 1240	1-3
	NPort 1220	1-4
	Panel Layout.....	1-5
	Dimensions	1-6
	DIP Switch Settings	1-7
Chapter 2	Driver Installation	2-1
	Installing the Driver	2-2
	Checking the Installation	2-9
	Configuring the Ports.....	2-10
	Windows 98	2-10
	Windows 2000/XP.....	2-11
	Uninstalling the Driver	2-12
Chapter 3	Serial Programming Tools.....	3-1
	Overview	3-2
	PComm Installation	3-2
	PComm Programming Library	3-2
	Utilities	3-2
	Terminal Emulator	3-3
Appendix A	Technical Reference	A-1
	Win32 API Function Compatible List.....	A-2
	Windows 98	A-2
	Windows 2000/XP.....	A-3
	General Technical Reference.....	A-4
Appendix B	Service Information.....	B-1
	MOXA Internet Services	B-2
	Problem Report Form	B-3
	Product Return Procedure.....	B-4

1

Introduction

Welcome to MOXA NPort 1220/1240 USB-to-Serial Hub. NPort 1220 provides 2 RS-422/485 serial ports and NPort 1240 provides 4 RS-232 serial ports.

The following topics are covered in this chapter:

- Overview**
- Package Checklist**
- Product Features**
- Product Specifications**

Overview

NPort 1200 Series USB to serial servers provide an extremely convenient means of connecting serial devices to a PC. In fact, you don't even need to power-down the PC. Just install the software that comes with the product, and then connect your serial devices directly to the NPort.

NPort 1200 Series products are compliant with both USB 1.0 and 1.1 specifications, are compatible with USB 2.0, and meet the 12 Mbps full speed requirement.

More and more peripherals are connected by the Ethernet or USB interface. The problem is how to integrate these different interfaces. Today's solution is to connect all devices using the open standard Ethernet and USB. The total cost of ownership is reduced, not only in short term hardware investment, but also in long term management and integrating cost.

The NPort 1200 Series supports both bus power and external power via an adapter. Bus power is adapted for laptop or workstation connections that support 500 mA output for USB devices. External power is adapted for those USB hubs that can only output 100 mA of current.

Package Checklist

MOXA NPort 1220/1240 products are shipped with the following items:

Standard Accessories

- 1 NPort 1240 4-port USB to RS-232 HUB, or NPort 1220 2-port USB to RS-422/485 Hub
- NPort 1200 Series Document & Software CD
- NPort 1220/1240 Quick Installation Guide
- Product Warranty Booklet

Optional Accessories

- DK-35A DIN-Rail Mounting Kit (35 mm)
- CB-USBAMB-1M USB A type to B type Cable, 1m

NOTE: *Notify your sales representative if any of the above items is missing or damaged.*

Product Features

NPort 1240 Series products enjoy the following features:

- Expand to 4 RS-232 ports (NPort 1240) or 2 RS-422/485 ports (NPort 1220) through USB
- Hot plug and play
- No additional I/O or IRQ required
- RS-232 (NPort 1240) and RS-422/485 (NPort 1220) speed up to 115.2 Kbps
- Supports USB 1.1, full rate speed up to 12 Mbps
- Built-in 16 KV ESD Surge Protection
- Supports Windows 98/ME/2000/XP drivers
- Supports both bus power and external power
- NPort 1220/1220I: Supports 4-wire RS-422/485 and 2-wire RS-485 applications
- NPort 1220I: Supports 2 KV Isolation Protection

Product Specifications

NPort 1240

USB

Compliant with USB 1.1, 1.0

USB 2.0 backwards compatible

Connector USB type B

Speed Full speed 12 Mbps

Serial

No. of Ports 4

Interface RS-232: TxD, RxD, RTS, CTS, DTR, DSR, GND

Connector DB9 Male

FIFO 64 bytes

Serial line protection 16 KV ESD for all signals

Serial Communication Parameters

Parity None, Even, Odd

Data bits 7, 8

Stop bit 1, 2

Flow Control ADDC (Auto Data Direction Control)

Speed 600 to 115.2 Kbps

Power Requirements

Power Input 12 to 48 VDC (External) or 5 VDC (Bus power)

Power Consumption BUS: 172 mA @ 5 VDC

Ext. PWR: 117 mA @ 12 VDC

Mechanical Specifications

Material ABS

Gross Weight 220±5 g (0.48 lb)

Environmental

Operating Temperature 0 to 55°C (32 to 131°F)

Storage Temperature -20 to 85°C (-4 to 185°F)

Operating Humidity 5 to 95% RH

Agency Approvals

EMC FCC (class B), CE (Class B)

Safety UL, CUL, TÜV

Warranty 5 years

NPort 1220

USB

Compliant with USB 1.1, 1.0

USB 2.0 backwards compatible

Connector	USB type B
Speed	Full speed 12 Mbps

Serial

No. of Ports	2
Interface	4-wire RS-422: TxD+/-, RxD+/-, GND 4-wire RS-485: TxD+/-, RxD+/-, GND 2-wire RS-485: Data+/-, Data+/-, GND
Connector	Terminal Block
FIFO	64 bytes
Serial line protection	16 KV ESD for all signals

Serial Communication Parameters

Parity	None, Even, Odd
Data bits	7, 8
Stop bit	1, 2
Flow Control	ADDC (Auto Data Direction Control)
Speed	600 to 115.2 Kbps

Power Requirements

Power Input	12 to 48 VDC (external) or 5 VDC (Bus power)
Power Consumption	BUS: 140 mA @ 5 VDC Ext. PWR: 306 mA @ 12 VDC

Mechanical Specifications

Material	ABS
Gross Weight	215±5 g (0.48 lb)

Environmental




Operating Temperature	0 to 55°C (32 to 131°F)
Storage Temperature	-20 to 85°C (-4 to 185°F)
Operating Humidity	5 to 95% RH

Agency Approvals

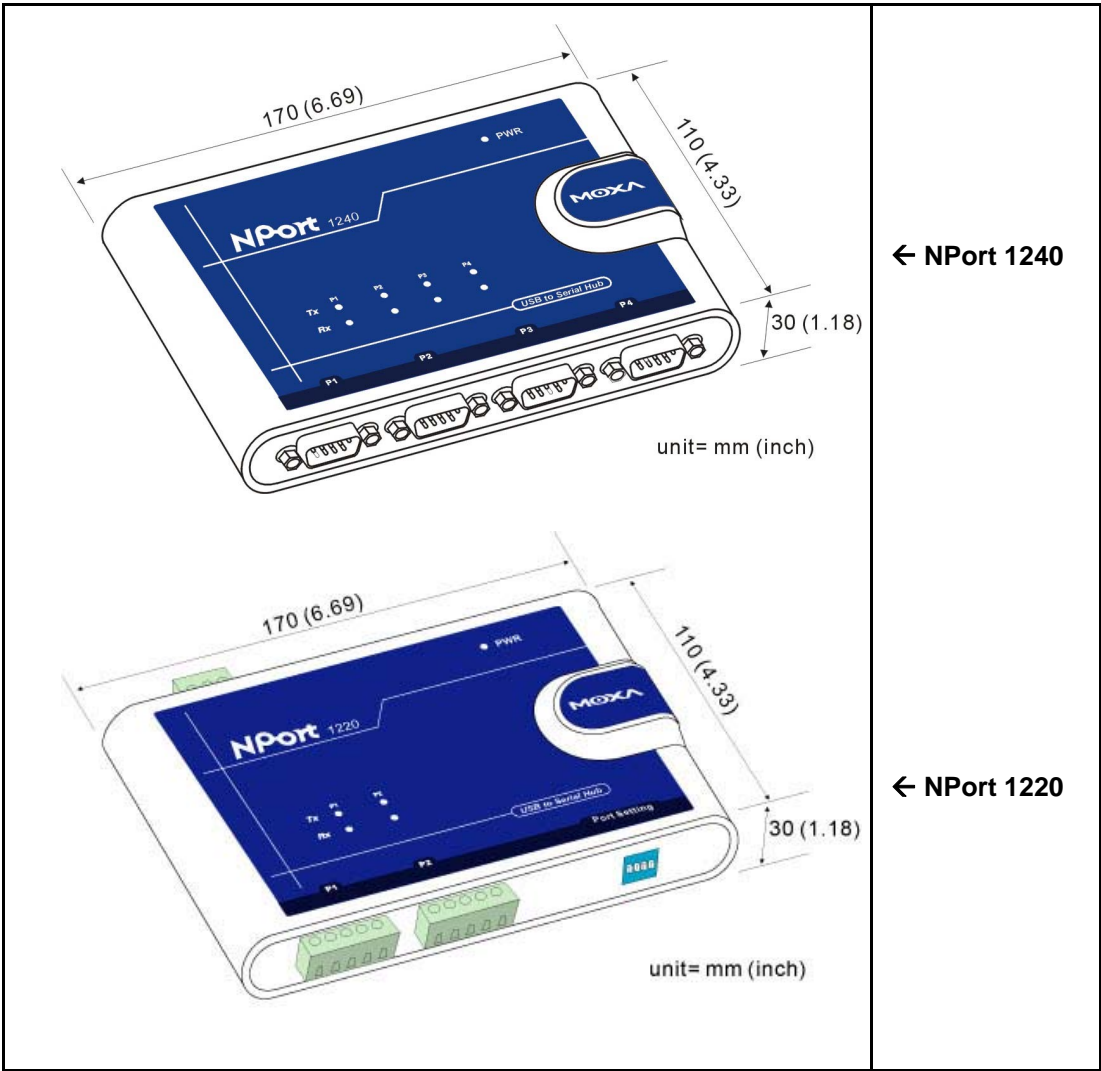
EMC	FCC (class B), CE (Class B)
Safety	UL, CUL, TÜV

Warranty	5 years
----------	---------

Panel Layout

	<p>← NPort 1240 Top Panel</p>
	<p>← NPort 1220 Top Panel</p>
	<p>← NPort 1240 serial interfaces</p>
	<p>← NPort 1220 serial interfaces</p>

Dimensions

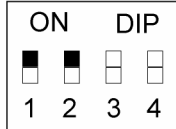


DIP Switch Settings

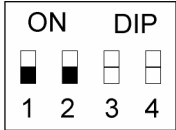
Switches 1 and 2 are for Port 1
Switches 3 and 4 are for Port 2



2-wire RS-485
with Termination
Resistor



4-wire RS-422/485
with Termination
Resistor



2-wire RS-485
without Termination
Resistor



4-wire RS-422/485
without Termination
Resistor

2

Driver Installation

This chapter includes information about installing the driver for NPort 1220/1240. We present the installation procedure for both Windows 98 and Windows 2000 (the procedure for Windows XP is essentially the same as for Windows 2000):

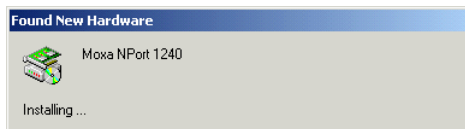
- Installing the Driver**
- Checking the Installation**
- Configuring the Ports**
 - Windows 98
 - Windows 2000/XP
- Panel Layout**
- Uninstalling the Driver**

NOTE For best results, we recommend that you install the USB driver for NPort 1220/1240 before connecting the product to your computer's USB port.

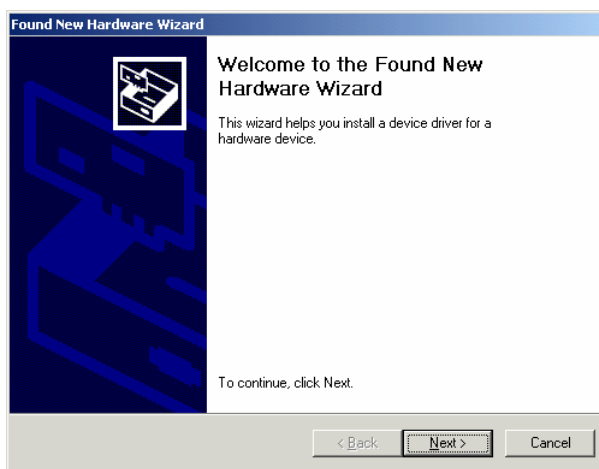
To do this, insert the software CD (included in the NPort 1220/1240 package) into your computer's CD drive, and click on **Install Software**.

Installing the Driver

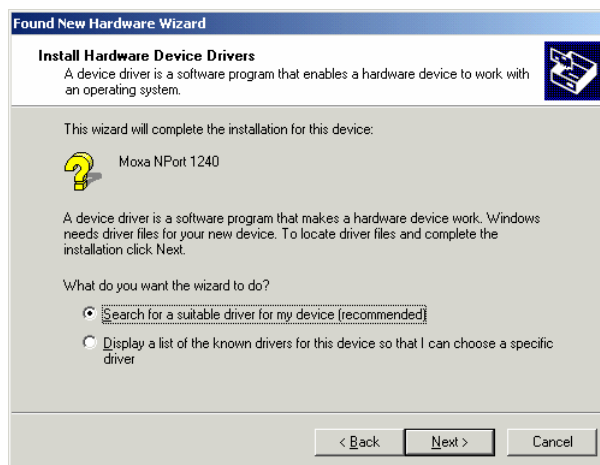
1. Connect NPort 1220/1240's USB Port to your computer's USB port. Make sure NPort 1220/1240 and your computer is properly connected.
2. After you connect NPort 1220/1240 to your computer, a **Found New Hardware** window will automatically open.



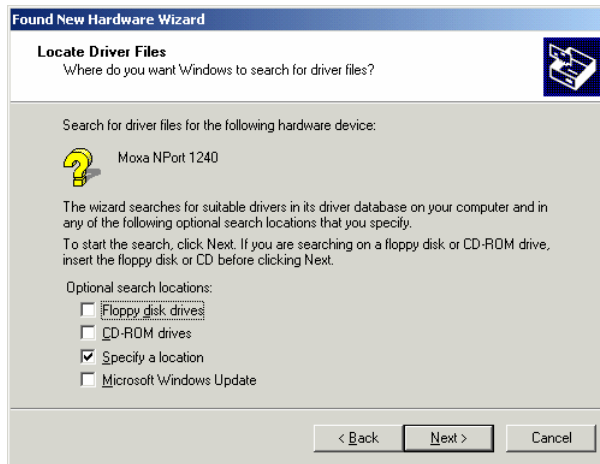
3. When the **Found New Hardware Wizard** starts up, click **Next** to continue installing the USB driver.



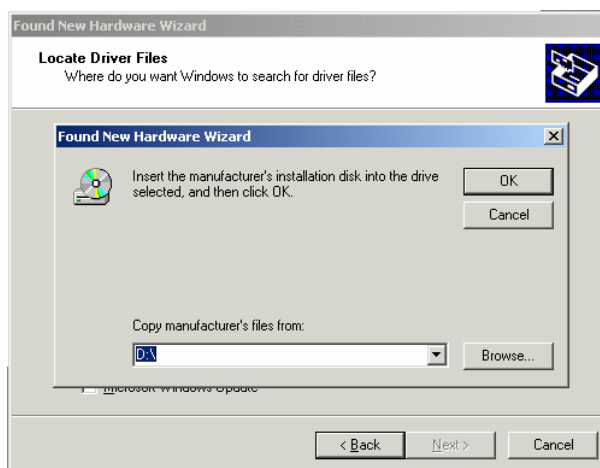
4. The setup program will prompt you with an **Install Hardware Device Drivers** window. Select **Search for a suitable driver for my device (recommended)**, and then click **Next**.



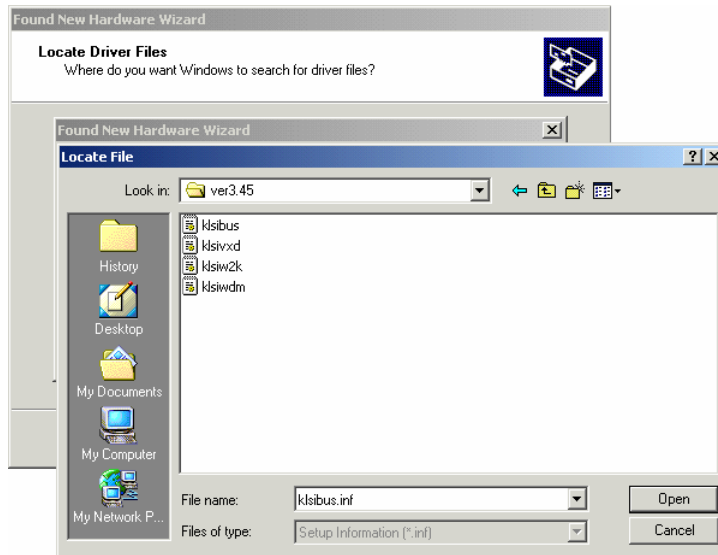
5. A window will open asking you where you want to locate the driver files. Check **Specify a location** box, and then click **Next**.



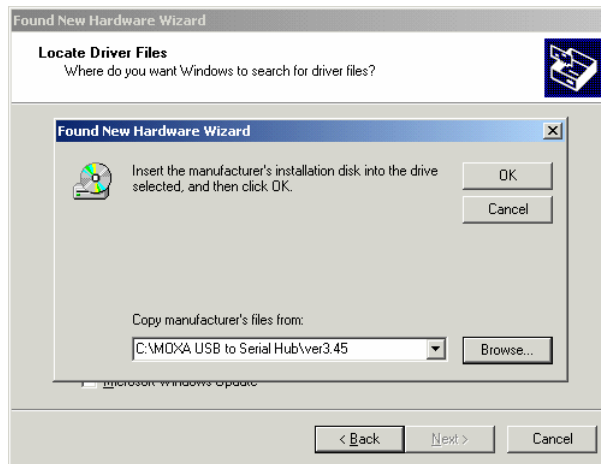
6. A window will open asking you to insert the installation disk. Insert the installation disk into your CD drive, and then click **Browse** to locate the installation file.



7. Select **ksibus.inf**, and then click **OPEN**.



8. Click **OK** to continue.



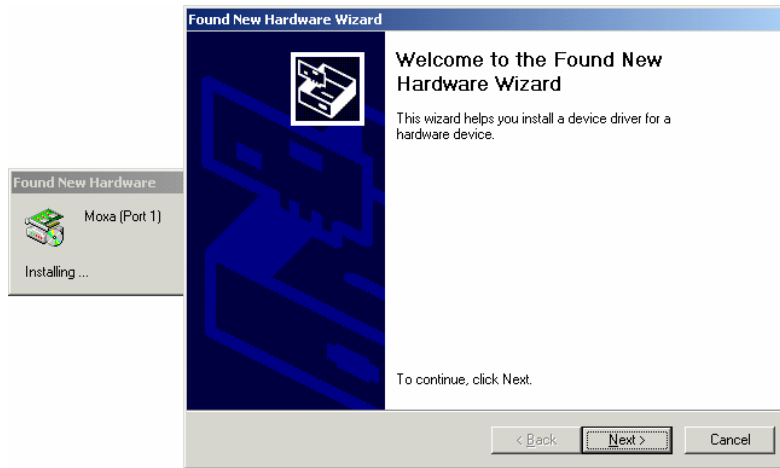
- A window will open showing the **Driver Files Search Results**. Click **Next** to install the driver.



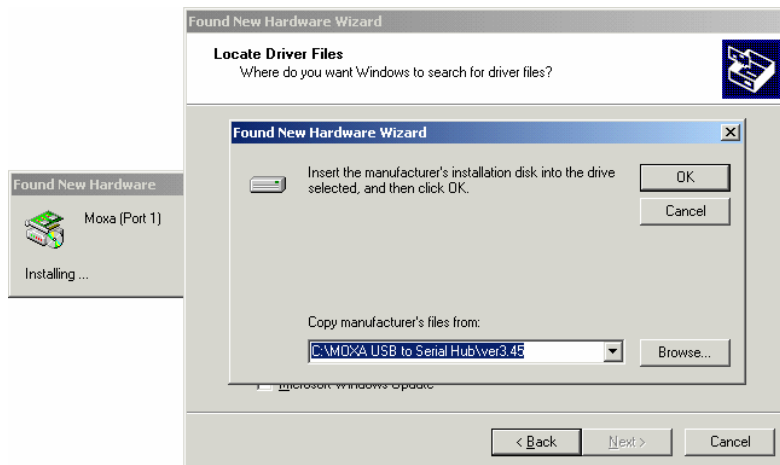
- When the **Completing the Found New Hardware Wizard** window opens, click **Finish** to close the wizard.



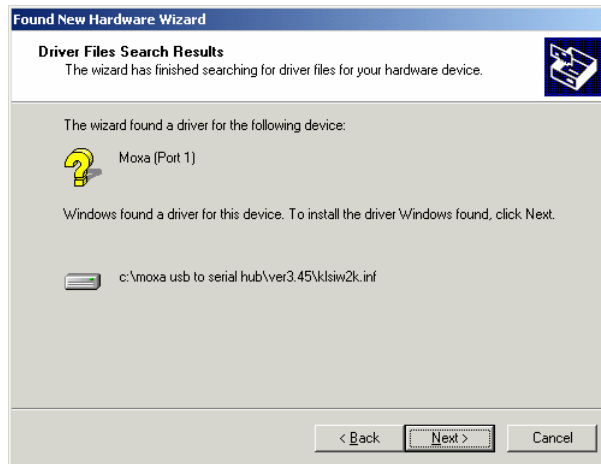
11. A welcome message will appear. Click Next to continue installing Moxa [Port 1].



12. A window will open asking you to insert the installation disk. Insert the installation disk into your CD drive, and then click **Browse** to locate the installation file. Select **klsiw2k.inf** and then click **OPEN**. Click OK to continue.



13. A window will open showing the **Driver Files Search Results**. Click **Next** to install the driver.

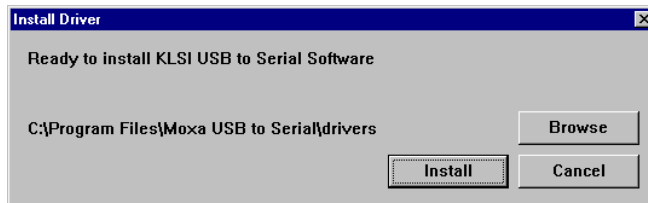


14. When **Completing the Found New Hardware Wizard** window opens, click **Finish** to close this wizard.

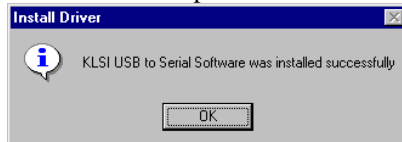


NOTE If you wish to install the driver using “Install Driver” program, you will need to follow the instructions below.

1. Insert the software CD (included in the NPort 1220/1240 package) into your computer's CD drive, and then click on **Install Software**.
2. When the **Install Driver** window opens, click on **Install** to install the driver files in the default folder (C:\Program Files\Moxa USB to Serial\drivers), or click on **Browse** to select a different folder.



3. Click **OK** to complete the installation.

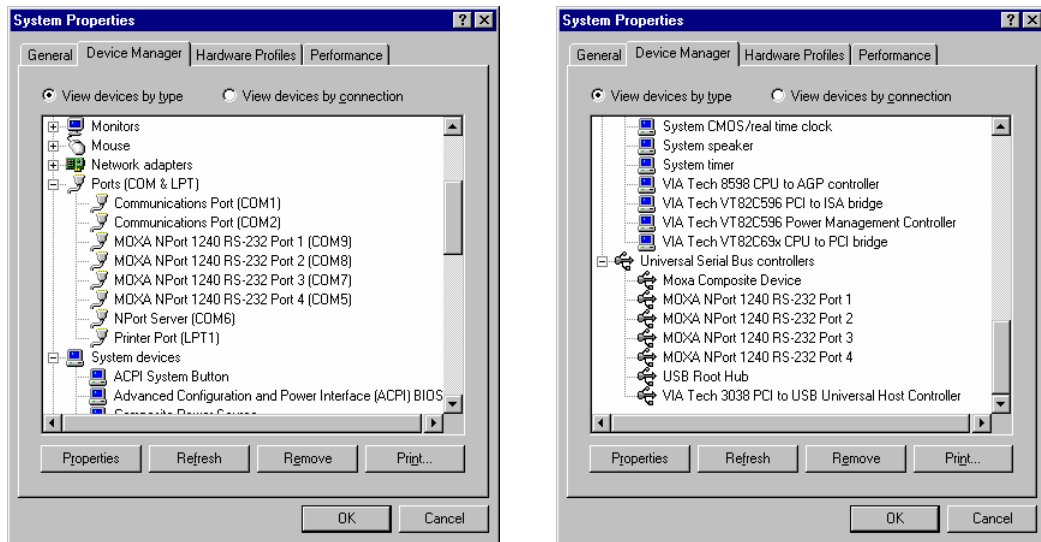


4. Connect NPort 1220/1240's USB port to your computer's USB port. NPort 1220/1240's serial ports will be installed automatically.

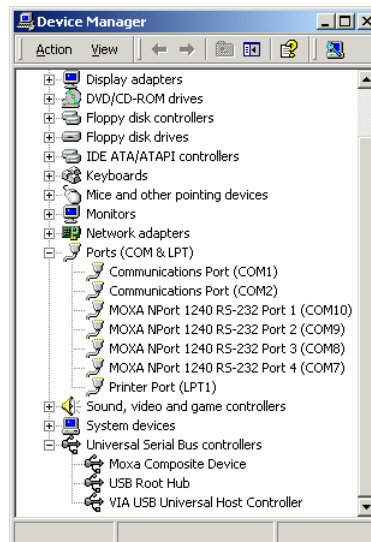
Checking the Installation

You can check the installation of NPort 1220/1240 under your computer's **Device Manager** window. You should check under both **Ports (COM & LPT)** and **Universal Serial Bus controllers**.

Windows 98



Windows 2000/XP



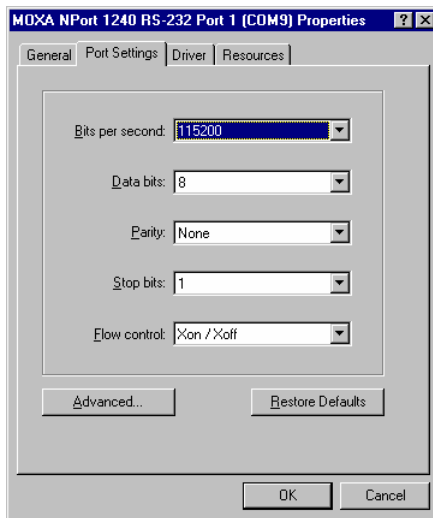
NOTE To double check that the driver and port installation is correct, unplug the NPort 1220/1240 from your computer's USB port—while the *Device Manager* window is open. The MOXA listings under both **Ports (COM & LPT)** and **Universal Serial Bus Controllers** should disappear. Then replug NPort 1220/1240 into your computer's USB port, and the MOXA listings should reappear.

Configuring the Ports

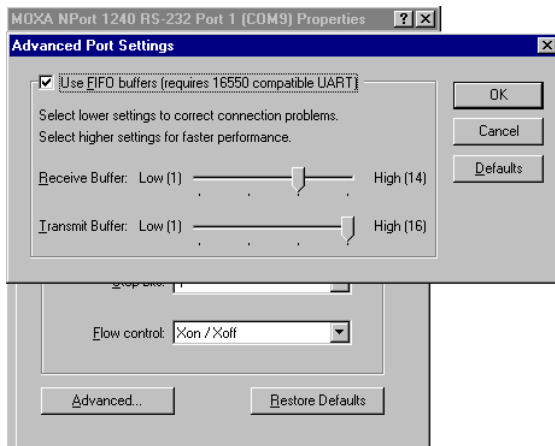
Port configuration for NPort 1220/1240 differs slightly between Windows 98 and Windows 2000/XP. To modify the configuration for a particular port, double click on the listing for that port under **Ports (COM & LPT)** in the Device Manager window.

Windows 98

Click on the **Port Settings** tab to change the **Bits per second** (data transmission speed), **Data bits**, **Parity**, **Stop bits**, and **Flow control**.



Click on **Advanced...** to open the **Advanced Port Settings** to modify FIFO buffer settings.

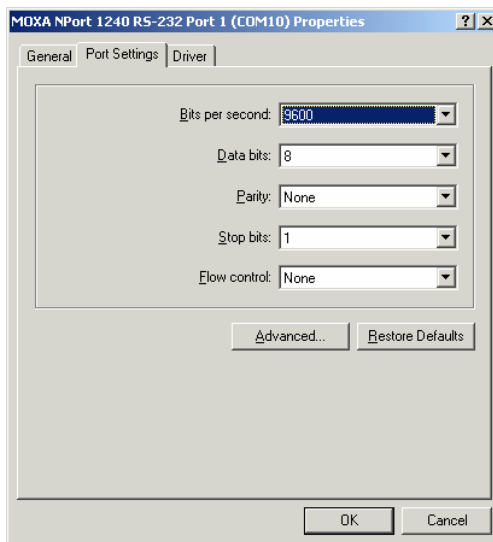


NOTE Under Windows 98, you will not be able to change the COM port number for NPort 1220/1240's serial ports. You will need to use the default COM port number assigned by the OS after the ports are installed.

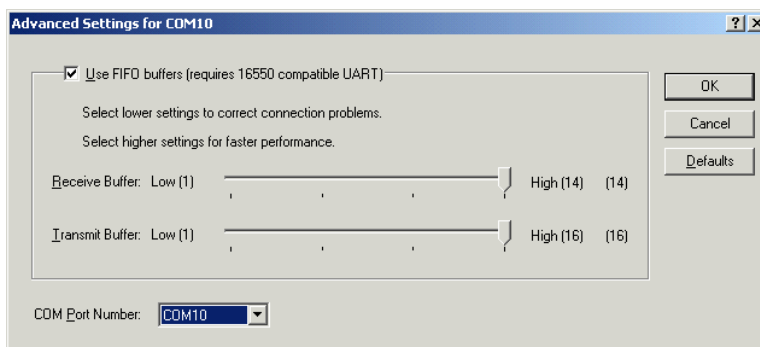
Windows 2000/XP

The figures shown here were created under Windows 2000. The procedure for Windows XP is essentially the same.

Click on the **Port Settings** tab to change the **Bits per second** (data transmission speed), **Data bits**, **Parity**, **Stop bits**, and **Flow control**.



Click on **Advanced...** to open the **Advanced Port Settings** to modify FIFO buffer settings. You may also select a new COM port number using the drop-down list located next to **COM Port Number**.



NOTE Under Windows 2000/XP, you can select a new COM Port Number on the **Advanced Settings for COMx** window.

Uninstalling the Driver

To uninstall the driver, open the Device Manger window, and simply delete the NPort 1220/1240 ports under Ports (COM&LPT).

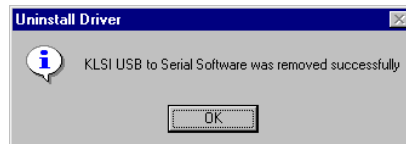
NOTE

If you used the **Install Driver** program discussed at the beginning of this chapter, you can make use of the **Uninstall Driver** program to remove the driver files from the directory in which they were installed, and uninstall NPort 1220/1240's ports.

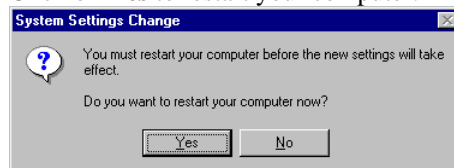
1. Click on **Uninstall** to start the uninstallation procedure.



2. Click **OK**.



3. Click on **Yes** to restart your computer.



Serial Programming Tools

Moxa supports a class of easy to use, yet powerful serial programming libraries and communication troubleshooting utilities under Windows NT/2000/XP and Windows 95/98. Use these MOXA Serial Programming Tools to decrease your software development time.

In the following sections, we describe the installation of the library, and the utilities supported for various programming platforms.

This chapter includes the following sections:

- ❑ **Overview**
- ❑ **PComm Installation**
- ❑ **PComm Programming Library**
- ❑ **Utilities**
- ❑ **Terminal Emulator**

Overview

PComm, a professional serial comm tool for PCs, is a software package that runs under Windows NT/2000/XP and Windows 95/98. PComm provides:

- A powerful serial communication library for easy programming in the most popular programming languages. The serial communication library is useful for developing applications for data communications, remote access, data acquisition, and industrial control under Windows NT/2000/XP or Windows 95/98. It is a simpler solution compared to the more complex Windows Win32 COMM API.
- Useful utilities such as diagnostic, monitor, and terminal emulator.
- Illustrative sample programs.

PComm Installation

To install PComm, run \Setup.exe from the diskette enclosed in the package. Please note that the PComm diagnostic and monitor utilities are for MOXA products only; these two utilities will not work with other manufacturers products.

After PComm is successfully installed, click on **Start → Program Files → PComm Lite** to select a list of utilities and documents.

PComm Programming Library

The serial communication library assists you in developing serial communications programs for any COM port that complies with Microsoft Win32 API. It facilitates the implementation of multi-process and multi-thread serial communication programs and hence remarkably reduces development time.

This serial communication library provides a complete function library and sample programs for Visual C++, Visual Basic, and Delphi. To view detailed function descriptions and sample programs, click on **Start → Program → PComm Lite → PComm Lib Help → PComm Porting Notes** or **PComm Programming Guide**, or refer to the sample programs in the PComm directory.

Utilities

In this section, we give brief descriptions of each utility. For more information about these utilities, see the on-line help from the software diskette.

A

Technical Reference

In this appendix, we cover the following topics.

- ❑ **Win32 API Function Compatible List**
 - Windows 98
 - Windows 2000/XP
- ❑ **General Technical Reference**

Win32 API Function Compatible List

Windows 98

Test function	Test Flag
1. PurgeComm	PURGE_TXABORT
	PURGE_RXABORT
2. ClearCommBreak()	
3. SetCommBreak()	
4. ClearCommError	cbInQue
	cbOutQue
5. EscapeCommFunction	SETDTR
	SETRTS
	SETXON
	SETXOFF
	SETBREAK,CLRBREAK
6. GetCommMask	EV_BREAK
	EV_CTS
	EV_DSR
	EV_ERR
	EV_RING
	EV_RLSD
	EV_RXCHAR
	EV_RXFLAG
	EV_TXEMPTY
7. GetCommModemStatus()	
8. SetCommMask	EV_CTS
	EV_DSR
	EV_RLSD
	EV_RXCHAR
	EV_RXFLAG
10. SetCommState	EV_TXEMPTY
	BaudRate
	Parity, ByteSize, StopBits, fParity
	ErrorChar, fErrorChar
	fNull
	fRtsControl=RTS_CONTROL_DISABLE
	fRtsControl=RTS_CONTROL_ENABLE
	fDtrControl=DTR_CONTROL_DISABLE
	fDtrControl=DTR_CONTROL_ENABLE
FDsrSensitivity=TRUE	
11. SetCommTimeouts	ReadIntervalTimeout
	WriteTotalTimeoutMultiplier
	WriteTotalTimeoutConstant
13. HWFlowContrl()	dcb.fRtsControl=RTS_CONTROL_HANDSHAK

	E
14. CloseHandle()	
15. ReadFile()	

Windows 2000/XP

Test function	Test Flag
1. PurgeComm	PURGE_TXABORT
	PURGE_RXABORT
	PURGE_TXCLEAR
2. ClearCommBreak()	
3. SetCommBreak()	
4. ClearCommError	CE_BREAK
	CE_RXPARITY
	CE_FRAME
	CE_RXOVER
	fCtsHold
	fDsrHold
	fXoffHold
	cbInQue
	cbOutQue
	5. EscapeCommFunction
SETRTS	
SETXON	
SETXOFF	
SETBREAK,CLRBREAK	
6. GetCommMask	
	EV_CTS
	EV_DSR
	EV_RING
	EV_RLSD
	EV_RXCHAR
	EV_RXFLAG
	EV_TXEMPTY
8. GetCommModemStatus()	
9. SetCommMask	EV_CTS
	EV_DSR
	EV_RLSD
	EV_RXCHAR
	EV_RXFLAG
	EV_TXEMPTY
	EV_TXEMPTY
10. SetCommState	BaudRate
	Parity, ByteSize, StopBits,fParity
	ErrorChar,fErrorChar
	fNull

	fRtsControl=RTS_CONTROL_DISABLE
	fRtsControl=RTS_CONTROL_ENABLE
	fDtrControl=DTR_CONTROL_DISABLE
	fDtrControl=DTR_CONTROL_ENABLE
	FDsrSensitivity=TRUE
11.SetCommTimeouts	ReadIntervalTimeout
	ReadTotalTimeoutMultiplier
	ReadTotalTimeoutConstant
	WriteTotalTimeoutMultiplier
	WriteTotalTimeoutConstant
12. HWFlowControl()	dcb.fRtsControl=RTS_CONTROL_HANDSHAKE
13. ReadFile()	

General Technical Reference

Question 1

Why does the port stop responding when I use a program to fast open/close the port? On the other hand, if I just do a normal port open/close, the port will stop responding after about 100 times. In a related problem, if I use the port on a dial-up network, the port will sometimes stop responding, or when I add a new modem under Windows XP, the port will be dead the first time I use the modem.

Answer 1

For all of these problems, simply unplug and then re-plug NPort 1220/1240 from the computer's USB port.

Question 2

NPort 1220/1240 currently supports baud rates from 600 bps to 115200 bps. However, if I set an invalid baud rate, such as 300 bps, the driver does not return an error.

Answer 2

This problem stems from the fact that some Windows operating systems do not alert the user to the baud rate limits of connected devices.

Question 3

Why is it that when I use NPort 1220/1240 under Windows XP, the OS loading is sometimes around 45%?

Answer 3

This problem is a common characteristic that appears when using USB devices under Windows XP.

Question 4

When I install NPort 1220/1240 under Windows 2000/XP, the COM port number is assigned by which USB slot I use to connect to my computer. What happens if I change the USB slot?

Answer 4

The port number will change. Keep in mind that the port number is automatically assigned by the OS.

Question 5

Under Windows 2000, it seems that the more USB ports I install (e.g., close to 25 or 30 ports), the port throughput drops to around 1%. How do I get around this problem?

Answer 5

We recommend limiting to 16 ports the number of USB ports installed under Windows 2000.

B

Service Information

This appendix shows you how to contact Moxa for information about this and other products, and how to report problems.

In this appendix, we cover the following topics.

- MOXA Internet Services**
- Problem Report Form**
- Product Return Procedure**

MOXA Internet Services

Customer satisfaction is our number one concern, and to ensure that customers receive the full benefit of our products, Moxa Internet Services has been set up to provide technical support, driver updates, product information, and user's manual updates.

The following services are provided

E-mail for technical support.....support@moxa.com.tw

World Wide Web (WWW) Site for product information:

.....<http://www.moxa.com> or

.....<http://www.moxa.com.tw>

Product Return Procedure

For product repair, exchange, or refund, the customer must:

- ◆ Provide evidence of original purchase.
- ◆ Obtain a Product Return Agreement (PRA) from the sales representative or dealer.
- ◆ Fill out the Problem Report Form (PRF). Include as much detail as possible for a shorter product repair time.
- ◆ Carefully pack the product in an anti-static package, and send it, pre-paid, to the dealer. The PRA should be visible on the outside of the package, and include a description of the problem, along with the return address and telephone number of a technical contact.