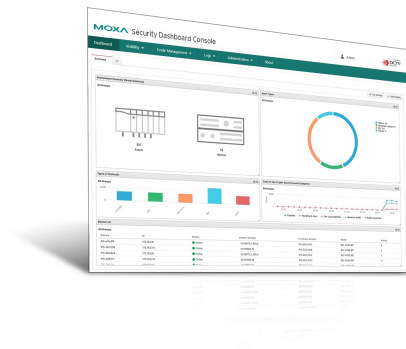


Security Dashboard Console

Industrial network security management software designed for OT networks

Features and Benefits

- Central management and monitoring of all your IEC-G102-BP Series and IEF-G9010 Series devices
- Full visibility on the real-time status of your network security and OT systems
- Bulk configuration to reduce deployment time and maintenance costs



Introduction

The Security Dashboard Console (SDC) software is a centralized security platform that allows you to manage IEC-G102-BP Series industrial next-generation IPS and IEF-G9010 industrial next-generation firewall devices on the network and monitor OT cyberthreats to ensure uninterrupted production line operation. SDC offers an additional layer of network protection by providing centralized critical asset visibility, network analysis, and auto pattern updating.

Centrally Manage Network Security

Security Dashboard Console helps administrators and operators centrally manage and monitor all IEC-G102-BP Series and IEF-G9010 Series devices more effectively from a single platform. This offers administrators a way to easily execute policy, firmware, and pattern updates to groups of devices and ensure the network is always backed by the latest security updates.

Enhance OT Networks Visibility

The intuitive dashboard offers data visualization in the form of interactive widgets that can be customized to provide you with the information you need. Having full at-a-glance visibility on network activity and the status of OT systems lets administrators monitor the security network in real-time.

Increase Convenience and Interconnectivity

Reduce your maintenance costs by troubleshooting your security network remotely across different facilities through a single central management platform. SDC monitors and logs activity at the device level for events such as cybersecurity, policy enforcement, protocol filtering, system logs, audits, and asset detection.

Specifications

Hardware Requirements

Hardware Disk Space	256 GB or above
RAM	8 GB for up to 50 managed nodes 16 GB for up to 100 managed nodes 32 GB for up to 150 managed nodes 32 GB for up to 200 managed nodes 64 GB for up to 300 managed nodes 128 GB for up to 400 managed nodes 256 GB for up to 500 managed nodes

Supported Hypervisors	VMWare ESX 6.X or above / VM Workstation V14 or above / KVM 2.x or above
vCore	4 vCores for up to 50 managed nodes 4 vCores for up to 100 managed nodes 6 vCores for up to 150 managed nodes 8 vCores for up to 200 managed nodes 12 vCores for up to 300 managed nodes 14 vCores for up to 400 managed nodes 16 vCores for up to 500 managed nodes

Ordering Information

Model Name	License Type	No. of Nodes	License Term
LIC-SDC-NEW-1Y-XN-SR	SDC license	Customizable, minimum 1 node	1 year
LIC-SDC-NEW-3Y-XN-SR	SDC license	Customizable, minimum 1 node	3 years
LIC-SDC-NEW-5Y-XN-SR	SDC license	Customizable, minimum 1 node	5 years
LIC-SDC-NEW-XM-XN-DMR	SDC license	Customizable, minimum 1 node	Customizable, minimum 1 month
LIC-SDC-ADD-1Q-XN-SR	SDC add-on license	Customizable, minimum 1 node	3 months
LIC-SDC-ADD-2Q-XN-SR	SDC add-on license	Customizable, minimum 1 node	6 months
LIC-SDC-ADD-3Q-XN-SR	SDC add-on license	Customizable, minimum 1 node	9 months
LIC-SDC-ADD-4Q-XN-SR	SDC add-on license	Customizable, minimum 1 node	1 year
LIC-IEC-NEW-1Y-XN-SR	IEC license	Customizable, minimum 1 node	1 year
LIC-IEC-NEW-XM-XN-DMR	IEC license	Customizable, minimum 1 node	Customizable, minimum 1 month
LIC-IEF-NEW-1Y-XN-SR	IEF license	Customizable, minimum 1 node	1 year
LIC-IEF-NEW-XM-XN-DMR	IEF license	Customizable, minimum 1 node	Customizable, minimum 1 month

© Moxa Inc. All rights reserved. Updated Aug 15, 2022.

This document and any portion thereof may not be reproduced or used in any manner whatsoever without the express written permission of Moxa Inc. Product specifications subject to change without notice. Visit our website for the most up-to-date product information.