

VPort 15-M12 series IP Camera Quick Installation Guide

This quick installation guide provides simple instructions for installing and connecting the VPort 15-M12 series of 1.3 megapixel fixed dome IP cameras. For detailed information, refer to the VPort 15-M12's user's manual.

Ethernet Connection with 802.3 af PoE Power Supply

Refer to the figures below for connecting the VPort's Ethernet cable.



M12 D-Coded Connector



PoE Waterproof Switch

• M12 D-Coded Connection

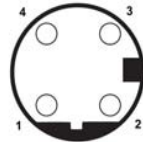
Connect the IP Camera's Ethernet cable to an M12 waterproof switch, as shown above.



ATTENTION

A PoE waterproof switch/hub must be used.

• M12 D-Coded Connector's Pin Definition



Pin 1: Rx+
Pin 2: Tx+
Pin 3: Rx-
Pin 4: Tx-

Before Login

Before logging in to your VPort, make sure that ActiveX downloading control is allowed by either changing the ActiveX Controls and plug-ins or by setting your Internet security level to "Default Level," as shown below.

Settings for ActiveX Controls and Plug-ins

Step 1: Start Internet Explorer (IE).

Step 2: Click <Tools> from the browser's menu bar and then click <Internet Options>.

Step 3: Click the <Security> tab and select "Internet," and then click <Custom level> to change ActiveX settings.

Step 4: Set "ActiveX Controls and plug-ins" items to <Prompt> or <Enable>.

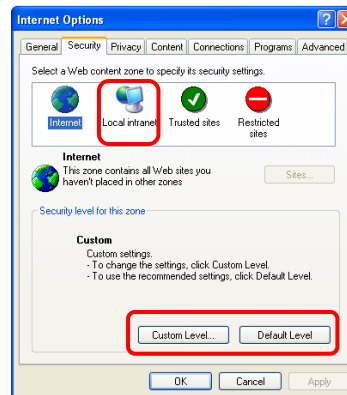
Internet Security Level

Step 1: Start Internet Explorer (IE).

Step 2: Select <Tools> from the browser's menu bar and then Click <Internet Options>.

Step 3: Click the <Security> tab and select "Internet."

Step 4: Click "Default Level" and then click "OK" to apply the new settings. Close the browser.



VPort 15-M12 Login

The VPort 15-M12's default IP address is 192.168.127.100. To access the VPort for the first time, set the PC's IP address to 192.168.127.XXX. For example:

IP Address: 192.168.127.1

Subnet Mask: 255.255.255.0

Use the Utility to Search for the Device

- Run the **Moxa Ethernet Switch and Video Server Configurator (edscfgui.exe)**
- Select **Broadcast Search** under the List Server's menu to search for all VPort devices.

NOTE: The Moxa Ethernet Switch and Video Server Configurator (edscfgui.exe) can be downloaded from Moxa's support website or copied from the software CD.

Login

- Double click on the VPort 15-M12 being searched for or type its IP address in the web browser's URL bar and then press **Enter**.

Note: It is strongly recommended that the administrator set up an administrator's password under **System Configuration** → **System** → **Account** after accessing the VPort 15-M12's web-based manager. The default administrator name is **admin** (this cannot be changed), and there is no default password. Once a password is set, authentication will be required for all logins.

Installing ActiveX Controls

- After connecting to the VPort, a request for installing ActiveX Controls will appear just below the URL bar.
- Right-click on the information bar, and then press "Install ActiveX Control..." to permit the installation of ActiveX Controls.
- A security warning message will appear the first time you access the VPort's web-based manager. The message is related to installing the VPort ActiveX Controls component to your PC or notebook. Click on **Install** to install this plug-in, which enables the IE web browser to view video images.



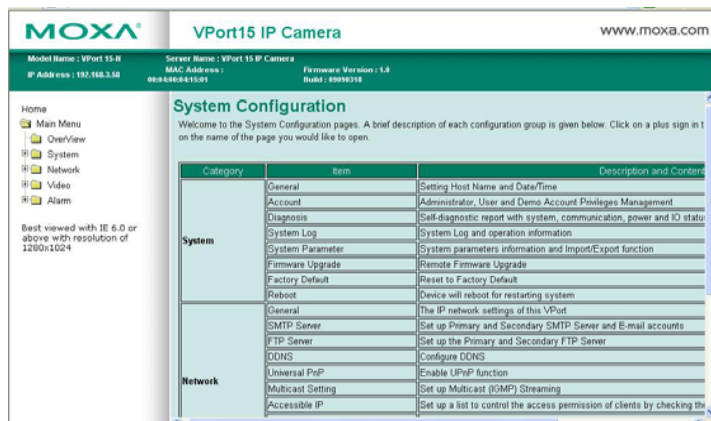
Web-based Manager

The main page of the VPort 15-M12 IP user interface:



System Configuration

Click on **System Configuration** to access the system configuration overview if you need to make changes to the configuration. For detailed information about each configuration, refer to the User's Manual on the software CD.



| Category | Item | Description and Contents |
|---------------|---|--|
| System | General | Setting Host Name and Date/Time |
| | Account | Administrator, User and Demo Account Privileges Management |
| | Diagnosis | Self-diagnostic report with system, communication, power and IO status |
| | System Log | System Log and operation information |
| | System Parameter | System parameters information and Import/Export function |
| | Firmware Upgrade | Remote Firmware Upgrade |
| | Factory Default | Revert to Factory Default |
| Network | Reboot | Device will reboot for restarting system |
| | General | The IP network settings of this VPort |
| | SMTP Server | Set up Primary and Secondary SMTP Server and E-mail accounts |
| | FTP Server | Set up the Primary and Secondary FTP Server |
| | DDNS | Configure DDNS |
| | Universal PoP | Enable UPnP function |
| | Multicast Setting | Set up Multicast (IGMP) Streaming |
| Accessible IP | Set up a list to control the access permission of clients by checking the | |

VPort 15-M12 IP Camera Quick Installation Guide



First Edition, September 2009

MOXA®

© 2009 Moxa Inc. All rights reserved.

Reproduction without permission is prohibited.

P/N: 1802000150010