

VPort 2110

User's Manual

www.moxa.com/products

Second Edition, October 2006

MOXA®

Moxa Networking Co., Ltd.

Tel: +886-2-2910-1230

Fax: +886-2-2910-1231

Web: www.moxa.com

MOXA Technical Support

Worldwide: support@moxanet.com

The Americas: support@usa.moxa.com

VPort 2110 User's Manual

The software described in this manual is furnished under a license agreement and may be used only in accordance with the terms of that agreement.

Copyright Notice

Copyright © 2006 Moxa Networking Co., Ltd.
All rights reserved.
Reproduction without permission is prohibited.

Trademarks

MOXA is a registered trademark of The Moxa Group.
All other trademarks or registered marks in this manual belong to their respective manufacturers.

Disclaimer

Information in this document is subject to change without notice and does not represent a commitment on the part of Moxa.

Moxa provides this document "as is," without warranty of any kind, either expressed or implied, including, but not limited to, its particular purpose. Moxa reserves the right to make improvements and/or changes to this manual, or to the products and/or the programs described in this manual, at any time.

Information provided in this manual is intended to be accurate and reliable. However, Moxa Networking assumes no responsibility for its use, or for any infringements on the rights of third parties that may result from its use.

This product might include unintentional technical or typographical errors. Changes are periodically made to the information herein to correct such errors, and these changes are incorporated into new editions of the publication.

Before getting started

Before using your VPort 2110, please pay close attention to the following items:

- ❑ After opening the VPort 2110 box, compare the contents of the box with the **Package Checklist in Chapter 1**. Notify your sales representative if any of the items is missing or damaged.
- ❑ To prevent damage or problems caused by improper usage, read the **Quick Installation Guide** (printed handbook in the package) or **Chapter 1, Introduction**, under **Product Description**, and **Chapter 2, Getting Started**, before assembling and operating the device and peripherals.
- ❑ If you experience a system error, and the system does not recover easily, refer to the **Troubleshooting** section in **Chapter 7** to learn how to restore factory default settings and reinstall the system.
- ❑ The VPort 2110 Video Server has been designed for various environments and can be used to build various applications for general security or demonstration purposes. For standard applications, refer to the appropriate section in **Chapter 2, Getting Started**, under **Accessing VPort 2110 Video Server for the First Time** section to find your application, and then follow the steps to set up the system. To make the best use of VPort, read **Chapter 5, Advanced Applications**, in the **URL Command for advanced functions** section to get creative ideas, and review **Chapter 4, System Configuration** for detailed explanations of system configurations.

Note

- ❑ Surveillance devices may be prohibited by law in your country. Since VPort is both a high performance surveillance system and networked video server, ensure that the operations of such devices are legal in your locality before installing this unit for surveillance purposes.

Table of Contents

Chapter 1	Introduction	1-1
	Overview	1-2
	Package Checklist.....	1-3
	Product Features	1-3
	Typical Applications	1-4
	Ethernet Connection.....	1-4
	Modem Dial-up Connection.....	1-4
	Product Descriptions	1-5
	Front Panel	1-5
	Rear Panel	1-5
Chapter 2	Getting Started	2-1
	Before Getting Started	2-2
	Setting up an Ethernet Environment.....	2-2
	Cable Connection	2-2
	Powering on VPort 2110 Video Server.....	2-3
	Assigning an IP Address to the VPort 2110 Video Server.....	2-3
	Working in a DHCP Server Networking Environment	2-3
	Installing the VPort Installation Wizard.....	2-3
	Running the VPort Installation Wizard	2-5
	Working in a Non-DHCP Server Networking Environment.....	2-5
	Assigning the IP Address Manually	2-6
	Accessing VPort 2110 Video Server for the First Time.....	2-6
	Setting up a Modem Environment.....	2-6
	Cable Connection	2-7
	Powering on VPort 2110 Video Server.....	2-8
	Configuring a Modem (Under Windows 2000 environment)	2-8
	Accessing VPort 2110 Video Server for the First Time.....	2-13
	Mounting VPort 2110.....	2-14
	Panel Mounting	2-14
	DIN-Rail Mounting.....	2-14
Chapter 3	Accessing VPort 2110 Video Server for the First Time.....	3-1
	Accessing VPort 2110 Video Server.....	3-2
	Opening Your Browser	3-2
	Authentication	3-2
	Installing the Plug-in Application	3-2
	Functions Featured on the Main Page	3-3
	Image Mode and Text Mode	3-3
	Logo and Host Name.....	3-4
	Video Quality Selection	3-4
	Image Size Selection	3-5
	System Configuration.....	3-5
	Relay Output Control	3-5
	Motorized (PTZ) Camera Control	3-5
	Custom Camera Commands.....	3-5
Chapter 4	System Configuration	4-1
	System Configuration Via Web Access	4-2

Using Setup Wizard	4-2
System	4-3
Security	4-4
Network.....	4-5
Video	4-8
COM port	4-10
Application.....	4-12
Homepage layout.....	4-15
View log file.....	4-17
View parameters.....	4-17
Factory default	4-17
System Configuration Via FTP.....	4-18
CONFIG.INI	4-18
System Configuration Via Telnet.....	4-24
Telnet Commands	4-24
System core debugging	4-24
Monitor changed status of digital inputs	4-24
Stop information dumping.....	4-24
Query status of digital inputs.....	4-24
Set digital outputs.....	4-24
Erase snapshots stored in Flash memory.....	4-24
Erase logo and graphic buttons	4-24
Skip installation at next boot.....	4-25
Reset network for new settings	4-25
Restore factory default settings	4-25
Reset system.....	4-25

Chapter 5	Advanced Applications.....	5-1
	Capturing Up-to-date Still Images.....	5-2
	Getting snapshot via URL	5-2
	Getting snapshot via FTP	5-2
	Video Embedded in Customers' Homepage	5-2
	Download Event-triggered Snapshots	5-3
	Getting triggered snapshots via URL	5-3
	Getting triggered snapshots via FTP	5-3
	Customizing Graphics in Homepage.....	5-3
	Command Script for DI/DO & Camera's Actions Setting.....	5-4
	Command format.....	5-4
	Parameter Explanations.....	5-5
	Practical Examples	5-5
	URL Commands for DI/DO & Camera's Actions Setting.....	5-6
	Query status of digital inputs.....	5-6
	Drive digital outputs.....	5-6
	Moving motorized camera in PTZ direction	5-6
	Recalling camera position	5-7
	Transparent Remote Serial Driver.....	5-7
	Sending command to device attached to COM port.....	5-7
	URL Commands for System Maintenance	5-7
	Download System Log via FTP	5-7
	Restart System via URL.....	5-7
	Restore Factory Default Settings via URL.....	5-7

Chapter 6	Upgrading System Firmware.....	6-1
	Using the VPort Installation Wizard to Upgrade Firmware.....	6-1
Chapter 7	Troubleshooting.....	7-1
	Power On Self Test (POST).....	7-2
	Frequently Asked Questions.....	7-2
Appendix A	URL Commands of Video Server.....	A-1
	Page URL.....	A-1
	System Resource URL.....	A-2
	General Format of Command URL.....	A-2
	System Configuration URL.....	A-2
	Security Configuration URL.....	A-3
	Network Configuration URL.....	A-3
	Video Configuration URL.....	A-4
	Image Quality Configuration URL.....	A-5
	Motion Detection Configuration URL.....	A-5
	COM Configuration URL.....	A-5
	Custom Camera Configuration URL.....	A-6
	Camera Custom Command Configuration URL.....	A-6
	Camera Preset Configuration URL.....	A-7
	Modem Configuration.....	A-7
	Application Configuration URL.....	A-7
	Homepage Layout Configuration URL.....	A-8
Appendix B	Settings of Supported PTZ Cameras.....	B-1
Appendix C	Camera Control Cable.....	C-1
Appendix D	Time Zone Table.....	D-1
Appendix E	Technical Specifications.....	E-1
Appendix F	Service Information.....	F-1
	MOXA Internet Services.....	F-2
	Problem Report Form.....	F-3
	Product Return Procedure.....	F-4

VPort 2110 is a high-performance networking video server. In addition to meeting the basic needs of video feed, many advanced features are included to help you set up surveillance or web attraction applications. The state-of-the-art design strikes a good balance between stability, robustness, ease-of-use, and flexibility.

The following topics are covered in this chapter:

- ❑ **Overview**
- ❑ **Package Checklist**
- ❑ **Product Features**
- ❑ **Typical Applications**
 - Ethernet Connection
 - Modem Dial-up Connection
- ❑ **Product Descriptions**
 - Front Panel
 - Rear Panel

Overview

VPort 2110 is a high-performance networking video server. With a powerful VLIW DSP core and fully optimized algorithm, it can compress and transmit high quality real-time video over a standard TCP/IP network. In addition to meeting the basic needs of video feed, many advanced features are included to help you set up surveillance or web attraction applications. The state-of-the-art design strikes a good balance between stability, robustness, ease-of-use, and flexibility.

Real-time Motion-JPEG compression

Video input can be efficiently compressed into packets of JPEG images without delay, and the optimized compression engine creates excellent images that take up much less memory space. This is all done without sacrificing remote monitoring capability or storage. Five levels of compression ratio and three different image resolutions are provided to provide more versatility.

Robust system operation

The industrial real-time operating system prevents hackers and viruses from wreaking havoc on both Windows and Linux systems, and the on-board watchdog improves reliability by continually monitoring the system's operation.

Easy Web access via standard browser

There is no need to install new software to access the Video Server, since the embedded Web Server allows users to access the Video Server from anywhere over Internet with any popular Web browser. As long as you are connected to the network, you will be able to view the same images seen by your cameras.

Users' Password protection

Users' Password protection is provided to prevent malicious intruders from accessing your system. Once the administrator password is configured, all users will need a password to access the Video Server.

Built-in VMD (Video Motion Detection)

External sensors are not required, since the video channel can be configured to detect motion, making it easy to set up a security system in either your home or office. And the customizable settings allow you to tune the system for both object size and sensitivity, making the Video Server adaptable to different environments.

Weekly schedule for automated surveillance

The user-defined time period will repeat weekly to check security settings and send notifications or drive external devices, making it easy to install in SOHOs, retail shops, and home security systems.

Flexible I/O control for external devices

One opto-isolated sensor input and one relay output are provided to control external devices, giving system integrators the option of turning an analog system into an advanced security system.

MOXA SoftDVR Lite IP Surveillance Software

To extend the Video Server's capabilities, MOXA SoftDVR Lite IP Surveillance Software, which supports a maximum of 4 cameras in quad, is included free of charge, allowing users to turn their PC into a digital video recorder. Scheduling or one-click recording saves important images on your local hard disk, and the reliable motion detection and instant warning features make you ready for any situation. A quick and easy to use search and playback function lets you easily find the image you're looking for, so that you can inspect the images more carefully, and also save the output to an AVI file.

Remote system upgrade

Video Server users have round-the-clock access to the most up-to-date firmware on our website, with a free upgrade wizard included to facilitate firmware installation.

Technical support for developers

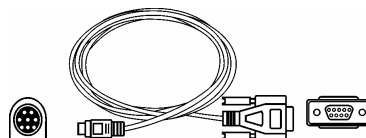
The high-performance Video Server can be integrated into many applications—without busting your budget—and the complete programming interface and standard JPEG format helps make the developer's job easy and straightforward. More ideas for Video Server applications can be found on our website.

Package Checklist

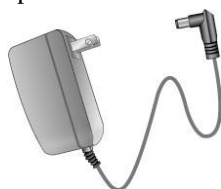
- 1 VPort 2110 Video Server



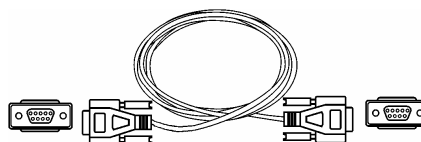
- Camera control cable



- Power adaptor



- Null modem cable



- GPIO terminal blocks



- Software CD



NOTE: Notify your sales representative if any of the above items is missing or damaged.

Product Features

VPort 2110 products have the following features:

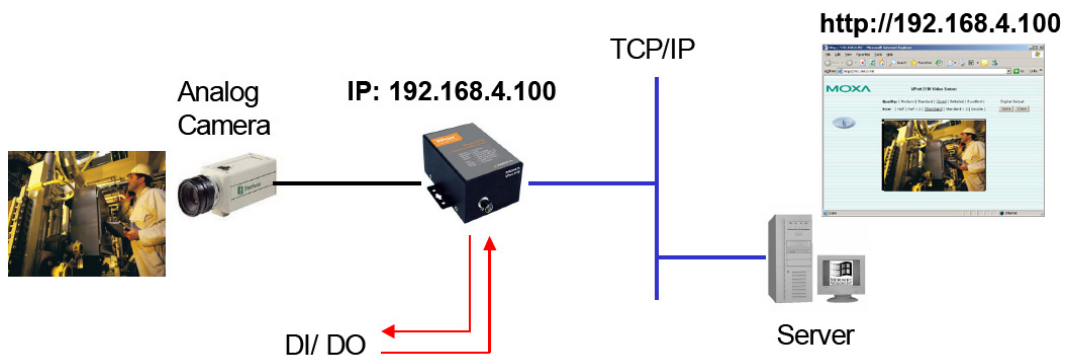
- Compact size, 1-ch MJPEG Video Server
- 1 BNC video input
- Stand-alone, with built-in web server for network interface
- Industry-standard real-time operating system without virus threat
- Real-time performance with powerful DSP
- Optimal solution by adjustable frame rate, bandwidth, and quality
- Video Motion Detection (VMD) with Pre/Event/Post images
- General I/O for external sensor and alarm
- Supports 1 RS-232/422/485 COM port for PTZ camera control or Modem dial-up connection
- Remote access of images via FTP or e-mail
- Password protection and administrator privilege
- Customized personal homepage
- Remotely upgrade the firmware to keep it in the best state

- Easy but powerful utilities for installation and maintenance
- MOXA SoftDVR™ IP Surveillance Software for viewing and recording bundled free

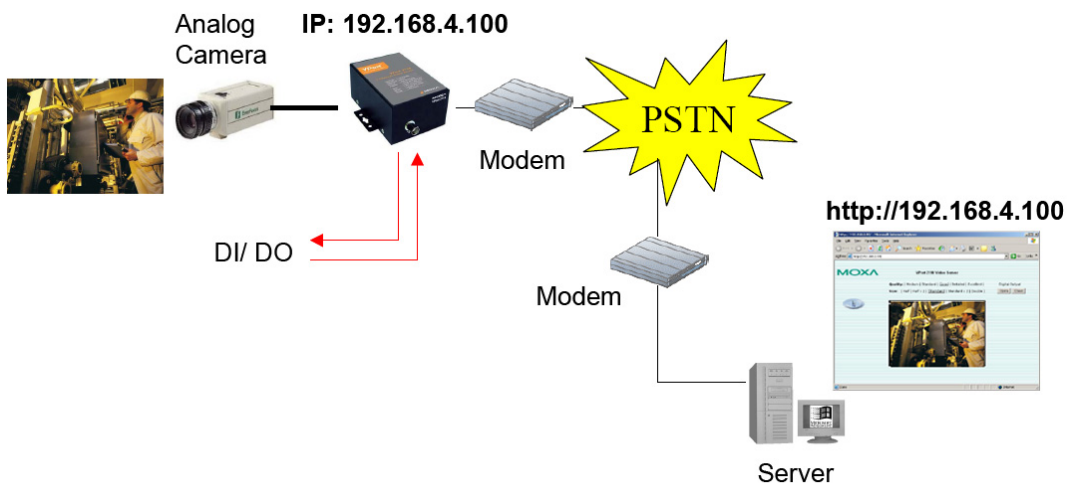
NOTE: ActiveX Control SDK is supports a flexible interface and sample codes for third-party developers (please contact a Moxa sales representatives if you require this SDK).

Typical Applications

Ethernet Connection



Modem Dial-up Connection

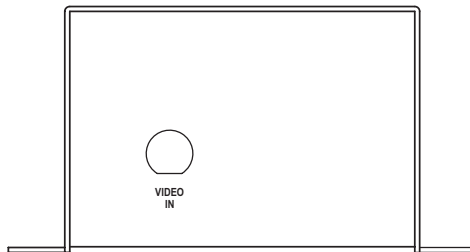


ATTENTION

VPort 2110 Video Server does not support a dial-out function, so when using the Modem Dial-up connection, you will not be able to receive warning messages, such as snapshots triggered by VMD, DI events, or sequential mode.

Product Descriptions

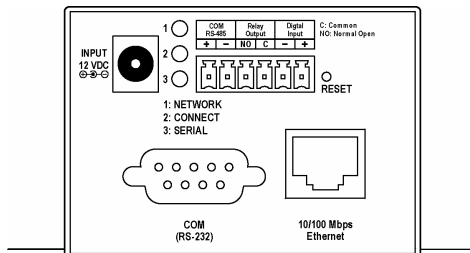
Front Panel



BNC video input

The BNC video input is a 75 Ohm video port for connecting an external camera. To ensure that the correct video modulation type is detected, cameras should be connected and powered on before the VPort is powered on.

Rear Panel



Network and Status LEDs

Each time the Video Server starts up, it will perform a Power-On-Self-Test (POST) to examine each hardware module. VPort 2110 Video Server has 3 LEDs:

1. **NETWORK**: detects the network's Tx/Rx status
2. **CONNECT**: checks if the Video Server alive or not
3. **SERIAL**: checks if the RS-232/485 COM port alive or not

As soon as the administrator plugs in the power connector, both the CONNECT and SERIAL LED's will flash, one by one, until the diagnosis is finished. If the result is good, these 2 LEDs will turn off momentarily, and then follow the pattern shown in the table below. If any of the modules fails, refer to **Chapter 7, Troubleshooting**, under **Power On Self Test** for the error pattern, and then follow the troubleshooting procedures. If the system still does not operate normally, please contact your reseller for technical service.

Mode	Condition	LED1 (NETWORK)	LED2 (CONNECT)	LED3 (SERIAL)
Ethernet Connection	Before installation	OFF	OFF	OFF
	After installation	Flash	Flash	OFF
	During camera control	Flash	Flash	Flash
Modem Dial-up Connection	After POST	OFF	Flash	ON
Null Modem Dial-up Connection	Before connected	OFF	ON	ON
	After connected	OFF	Flash	ON

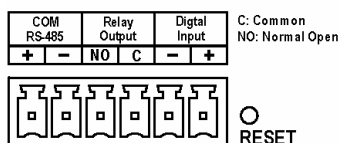
10/100 Mbps Ethernet port

Use a UTP category 5 cable shorter than 100 meters to connect to an Ethernet network. Once the Ethernet connection is successfully established, the Video Server will use the Ethernet interface instead of the modem attached to the COM port.

RS-232 COM port

The RS-232 serial port can connect to a modem, or you can use the included null modem cable to utilize a dial-up network when Ethernet is not available. If the Video Server is connected to the network via the Ethernet interface, you can use the RS-232 serial port to control a PTZ camera.

General I/O terminal block



COM	+	Data+	
RS-485	-	Data-	
Relay Output	NO	Normal Open	Max. 1A, 24 VDC or 0.5A, 125 VAC
	C	COMMON	Short with Normal Close at the initial state
Digital Input	-	DI-	
	+	DI+	Max. 50 mA, 12 VDC

The Video Server provides a very flexible general I/O interface that can be used with security devices, such as sensors, alarms, lighting fixtures, or door locks. The general I/O terminal block has six pins for device control. These pins can be divided into two categories based on the interface being used (RS-485 or DI/DO).

RS-485 COM

If the device (such as a PTZ camera control) connected to COM has an RS-485 interface, wire the RS-485 Data+ and Data- control lines to COM RS-485's "+" pin and "-" pin.

ATTENTION

Since RS-485 COM and RS-232 COM share the same UART chip, either RS-485 or RS-232 (but not both) can be used.

Digital Input/Relay Output

VPort 2110 Video Server provides one digital input and one relay output. The Digital Input's "+" pin and "-" pin can be connected to an external sensor to monitor the voltage according to the programmed scripts in configuration (see the "Command Script for DI/DO & Camera's Actions Setting" in Chapter 5). The Relay Output's "NO" pin and "C" pin can be used to turn an external alarm on or off.

Reset Button



A recessed RESET button is provided for restoring the system to the factory default settings. When the system fails to install properly, or operates abnormally, use the wrench included in the package to reset the system back to its original status. The procedure is as follows:

- Step 1: Stick the wrench into the hole to press down on the reset button, which is located about 1.5 cm inside the surface of the casing.
- Step 2: While keeping the reset button pressed, restart the system by powering off and on.
- Step 3: The system will perform POST twice rather than the once. You can verify this by observing the flashing "CONNECT" and "SERIAL" LEDs.
- Step 4: After the system flashes the LEDs for the second time, withdraw the wrench to release the button. The system will now be restored to the factory default settings.

12 VDC Power Adaptor

Connect the power jack of the included power adaptor. Connecting the power adaptor should be the last step involved in the Video Server hardware installation.

2

Getting Started

This chapter includes information about how to install a VPort 2110 Video Server.

The following topics are covered:

- ❑ **Before Getting Started**
- ❑ **Setting up an Ethernet Environment**
 - Cable Connection
 - Running the IP Installer Program
 - ~~RDQIP~~ Program

Cable

➤ ~~RDQ~~CE

Before Getting Started

To adapt easily to different environments, the Video Server automatically detects the attached interfaces and configures itself appropriately. For this reason, users do not need to worry about whether the connected cameras are either NTSC or PAL, how to select between Ethernet or modem, and whether the Ethernet speed is 10 Mbps or 100 Mbps.

The Video Server supports both Ethernet and modem dial-in connections. Refer to the installation section that applies to your network environment. If both interfaces are available, we recommend using Ethernet, which will be chosen automatically if an Ethernet cable and modem are both connected to the Video Server.



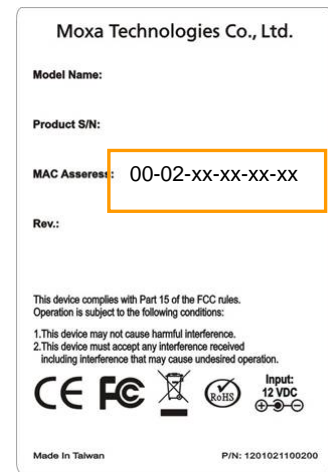
ATTENTION

Installing a different interface will automatically clear the previous network settings to start new installation.

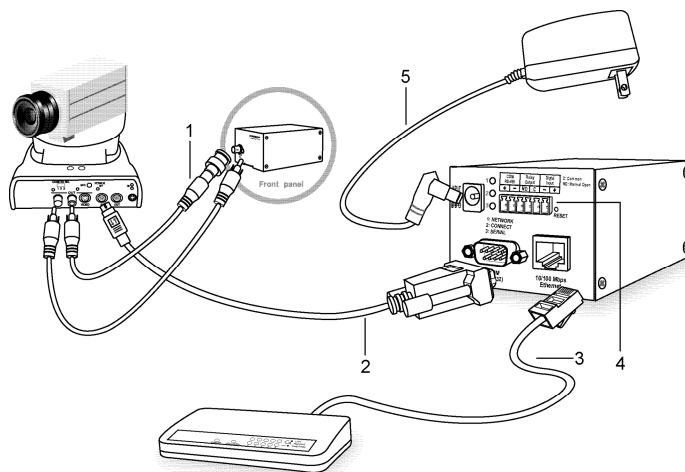
In what follows, “user” refers to those who can access the Video Server, and “administrator” refers to the person who knows the root password that allows changes to the Video Server’s configuration, in addition to providing general access. Administrators should read this part of the manual carefully, especially during installation.

Setting up an Ethernet Environment

Before installing multiple Video Servers at different locations, the administrator should record the MAC Address (located on the Video Server’s label) for future use, and then shut down all peripheral devices prior to connecting the devices. The video BNC, Ethernet cable, and power adaptor are needed to take advantage of the basic viewing function provided by the Video Server.



Cable Connection



Before powering on the VPort 2110 Video Server:

1. Connect your camera’s video output to the BNC video input.
2. Connect VPort’s COM port with your camera’s COM port if you are using a PTZ Camera.

3. Connect the hub or switch on the LAN to the VPort's 10/100 Mbps Ethernet port.
4. Connect I/O devices (such as sensors or alarms) to VPort's GPIO Terminal Block.

Powering on VPort 2110 Video Server

First, make sure that all cables are correctly and firmly connected, and then turn on the cameras, sensors, and alarm devices.

Next, power on the video server by attaching the Video Server's power adaptor to an electrical outlet. After the POST (Power-On Self Test) is completed successfully, the Video Server is ready to be configured. At this point, the network speed and video modulation type will be detected automatically.

Assigning an IP Address to the VPort 2110 Video Server

Working in a DHCP Server Networking Environment

The VPort's IP address is assigned by a DHCP server when the VPort is connected to a DHCP server network. In this case, use the DHCP Server's IP address table or the MOXA VPort Installation Wizard utility to determine the IP address that was assigned by the DHCP Server.

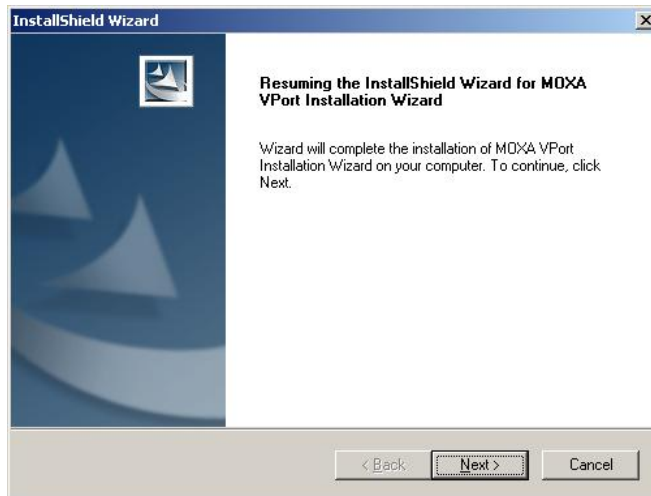
NOTE After powering on the VPort, wait a few seconds for the POST (Power On Self Test) to run. The CONNECT LED will light up to indicate that the IP address has been assigned.

Installing the VPort Installation Wizard

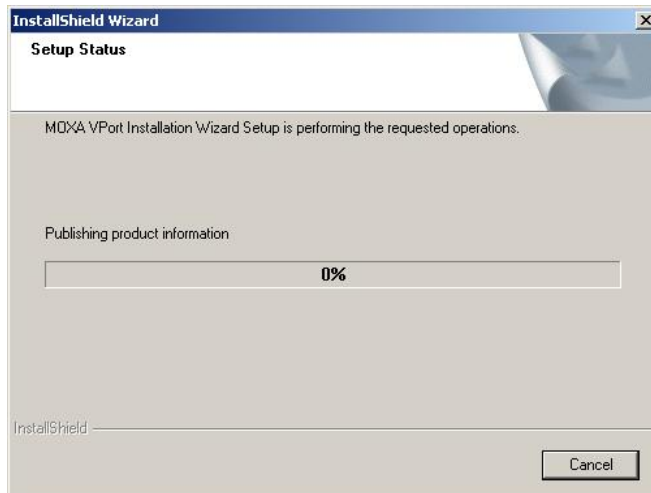
1. Install the VPort Installation Wizard, which is located on the Software CD.



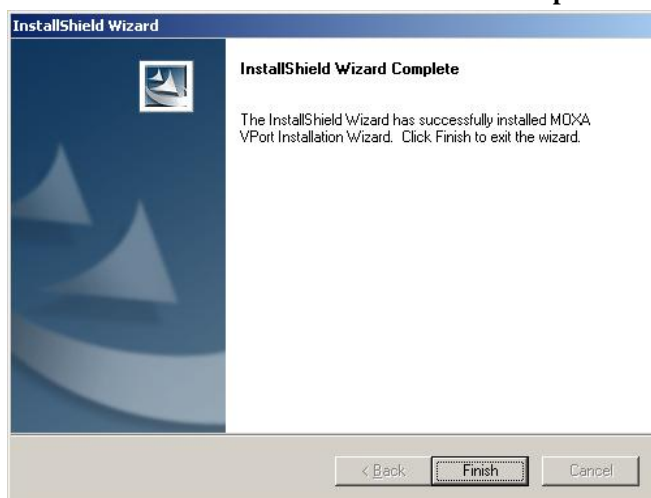
- Click **Next** when prompted.



- It may take several seconds to complete the installation.



- Click **Finish** when the **InstallShield Wizard Complete** window appears.



Running the VPort Installation Wizard

1. The VPort Installation Wizard will automatically search for VPort products connected to the same LAN as your computer. You can also click the **Search** button on the VPort Installation Wizard window to initiate a new search. Note that the wizard searches by MAC address.



2. When the wizard finishes searching, the MAC address, IP address, Assigned (IP assigned status), Model, and Auto IP (indicates whether or not this VPort has an auto IP assigned function) of the VPort will be listed in the VPort Installation Wizard window.
3. Select the VPort by checking the box in front of the MAC address, and then click the “Link to selected device” button to open the VPort’s web console with your web browser.

NOTE The IP assigned status will be listed as Yes if the VPort has been assigned an IP address. If the status is **No**, check to see if there is a problem with the DHCP network environment, or if the model you are using does not support the auto IP assigned function.

Working in a Non-DHCP Server Networking Environment

If your VPort is connected to a network that does not have a DHCP server, then you will need to configure the IP address manually. There are two ways to access the server:

1. If one VPort is connected to the network, open your web browser and type the default IP address in the browser’s address box. In this case, the default IP address is 192.168.0.99 and the default subnet mask is 255.255.255.0. Note that you may need to change your computer’s IP address and subnet mask so that the computer is on the same subnet as the VPort.

2. If two or more VPorts are connected to the network, the default IP addresses are 192.168.0.99, 192.168.0.100, etc. In this case, you can use the MOXA VPort Installation Wizard utility to determine the location of each VPort connected to the network. Since the VPort Installation Wizard searches by MAC address, the VPort and computer must be connected to the same Ethernet LAN for the VPort Installation Wizard to locate the VPort.

NOTE VPort's Network and Status LEDs can be used to determine if the VPort is transmitting and receiving data over the network. Refer to the User's Manual to see how to interpret the Network and Status LEDs.

Assigning the IP Address Manually

To change the IP address of the VPort manually, access the VPort's web server, and then navigate to the Configuration\ Network page to configure the IP address and other network settings. Uncheck the "Reset IP address at next boot" checkbox to ensure that the IP address you assign is not deleted each time the VPort is restarted.

Accessing VPort 2110 Video Server for the First Time

Once the installation is complete, administrators should follow the instructions described in the next chapter, **First Time Accessing VPort 2110 Video Server**, to make necessary configurations.

Setting up a Modem Environment

VPort 2110 Video Server provides 2 modem modes: Modem and Null Modem. The null modem mode can be used for point-to-point connections in a local environment. Although the baud rate can be set up to 115.2 Kbps, the actual data rate depends on the network connection. For dial-up connections, the VPort 2110 Video Server waits passively for a phone call to establish a point-to-point connection.



ATTENTION

The Modem and Null Modem dial-up connections are for initial usage of Video Server. If you have already used an Ethernet connection, reset Video Server to factory defaults before using a dial-up connection. In addition, when using a dial-up connection, the Ethernet socket must be disconnected.

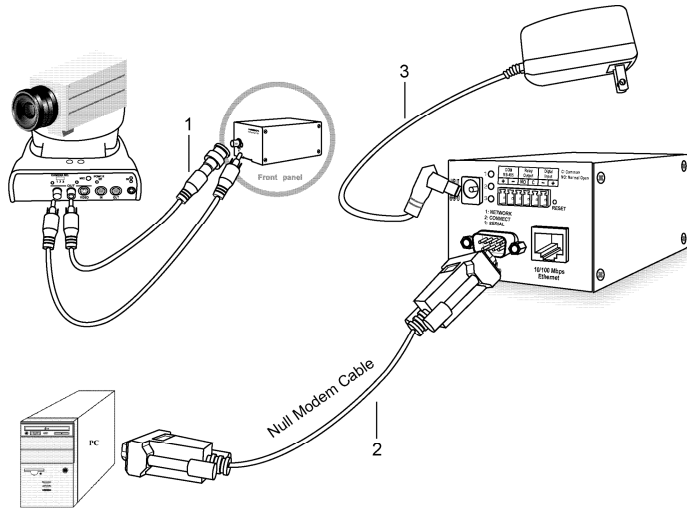


ATTENTION

The Modem and Null Modem connections for VPort 2110 Video Server only support the dial-in function, which means that you can access the VPort 2110 Video Server, but VPort 2110 Video Server cannot send alarm messages to you automatically via the Modem and Null Modem connection.

Cable Connection

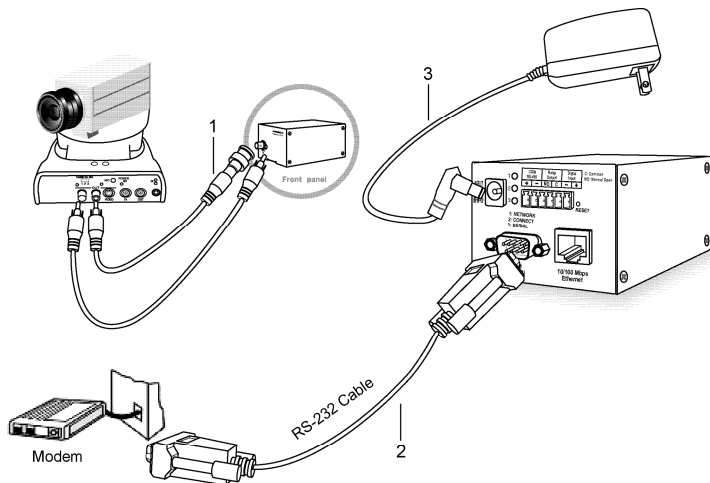
Null Modem



Before powering on the VPort 2110 Video Server:

1. Connect your camera's video output to the BNC video input.
2. Connect VPort's COM port with your PC's COM port.
3. Connect the power adaptor.

Modem



Before powering on the VPort 2110 Video Server:

1. Connect your camera's video output with the BNC video input.
2. Connect VPort's COM port with your modem's COM port.
3. Connect the power adaptor.

Powering on VPort 2110 Video Server

After all cables are correctly and firmly connected, turn on all peripheral devices, including cameras, sensors, and alarm devices. And then connect the VPort 2110 to the power supply.

After being powered on, the VPort will automatically detect if an external modem is connected to the modem port. As soon as an external modem is detected, the **CONNECT** LED will blink periodically. If no modem is detected, the VPort will assume that the included null modem cable is connected to perform system configuration. Both **CONNECT** and **SERIAL** LEDs will show as “steady on” until the dial-up connection over the null modem is established.

Configuring a Modem (Under Windows 2000 environment)

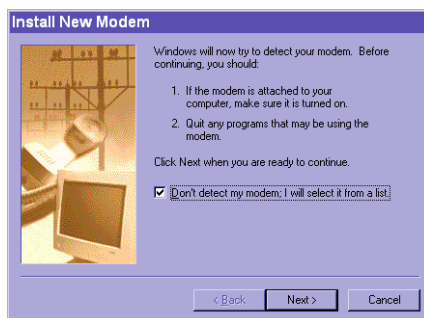
Install a new modem

Null Modem Mode

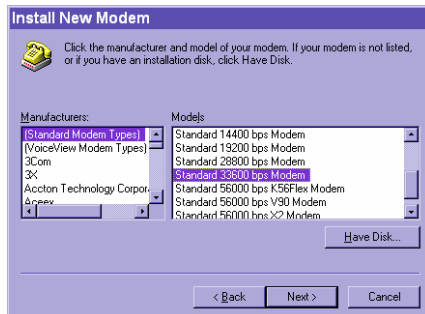
1. Click on **Start**→**Control Panel**→**Modems**.



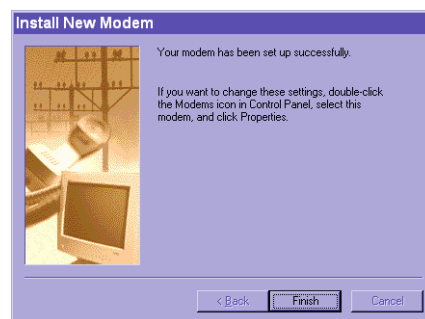
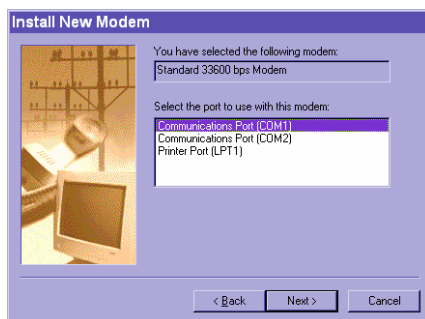
2. An **Install New Modem** message will appear. Check **Don't detect my modem; I will select it from a list**, and click on **Next** to continue.



- Under the **Manufacturers** column, select **(Standard Modem Types)**. A number of modem models will appear in the **Models** column. Select **Standard 33600 bps Modem**, and click on **Next** to continue.



- Select the serial port that the included null modem cable is connected to, and click on Next to continue. The null modem is now ready for use.



- If a Dial-Up adapter is not installed, Windows will automatically prompt you to install it. Click on **OK** to continue. If the adapter does not start automatically, double click on the **Control Panel** network icon install the **Microsoft Dial-Up Adapter**.



Modem Mode

- Click on **Start → Control Panel → Modems**.
- If you already have a Modem, read the Setting up a new connection section below. If you don't have a modem, an **Install New Modem** message will appear. Click on **Next**, and the system will detect the modem automatically. If your modem is not detected, you can select the Modem from the manufacturers column.

Setting up a new connection.

1. After the modem is installed, open the dialup network folder in Windows to set up a new connection.



2. Select the newly-installed **Modem** (for Modem connection) or **Standard 33600 bps Modem (for null modem connection)**, and then click on **Next** to continue.



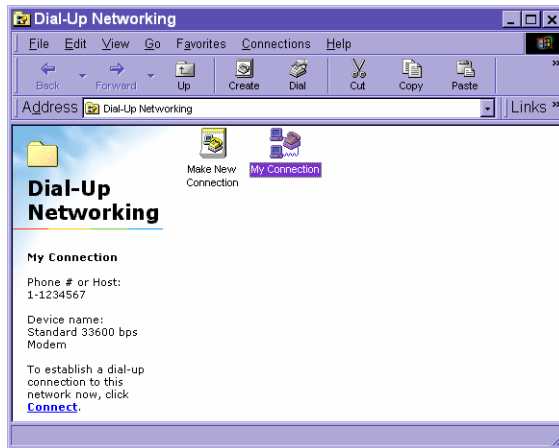
3. In modem mode, enter the phone number used to connect to your VPort 2110; in null modem mode, enter an arbitrary phone number, and then click on **Next** to continue.



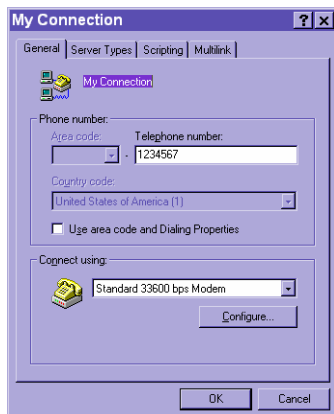
- Click on **Finish** to complete the installation of the new modem. The new connection will be displayed in the Dial-up Networking folder and will be used for modem or null modem connections.



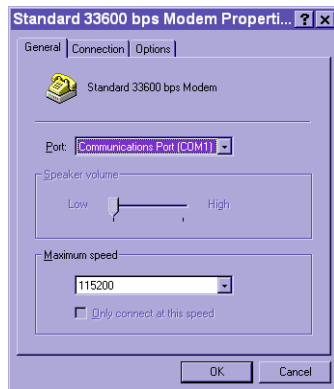
- Open the **Dial-Up Networking** window, and then click on the icon for the connection (My Connection) that was just installed to configure connection's properties.



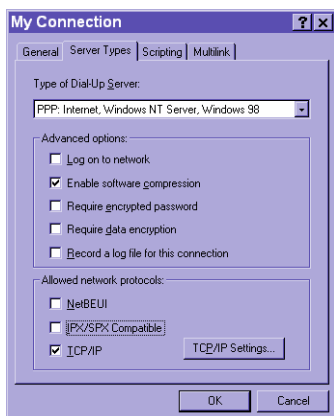
- When the My Connection window opens, right click on the **General** tab. In null modem mode, you should uncheck **Use area code and Dialing Properties**. Then click on **OK** to continue.



- Click on **Configure** to modify the modem's properties. Under **Maximum speed**, select **115200**, and then click **OK** to continue.



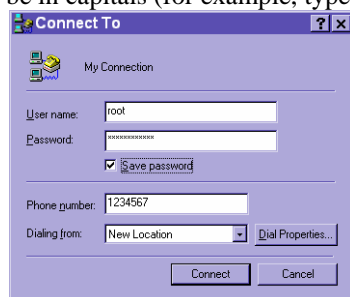
- Under the **Server Types** tab of my connection, checkmark the **Enable software compression** option under **Advanced options**, and checkmark the **TCP/IP** option under **Allowed network protocols**, as shown below. Leave settings under the other tabs as default values, and then click on **OK** to continue.



ATTENTION

Note that the location of the **Enable software compression** option and **TCP/IP** option might be different from OS to OS.

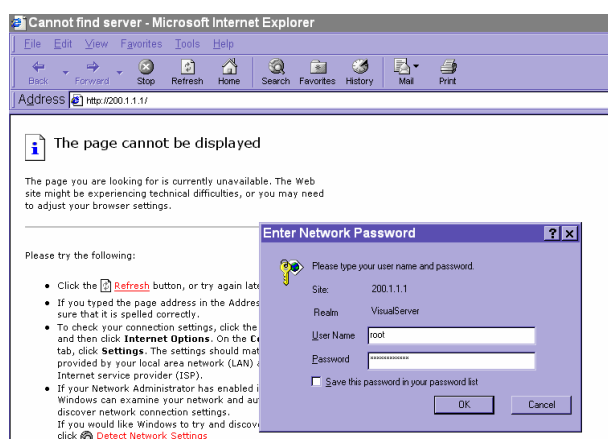
- The connection is now ready to use for modem and null modem mode. Double click on the newly-installed connection icon. A dialing information window will appear. Enter **root** as user name and the **MAC address** shown at the bottom of the window as the password, and then click on **Connect** to connect to the Internet. Note that the letters in the MAC address should be in capitals (for example, type **A** instead of **a**).



Accessing VPort 2110 Video Server for the First Time

In Null Modem Mode

Administrators can connect to <http://200.1.1.1> from the web browser directly via the null modem cable. 200.1.1.1 is VPort's default IP address for the dial-up connection; and 200.1.1.100 is the IP address assigned by VPort to the user's PC. The user name and password are the same as what were entered during the software installation. After successful authentication, administrators should see the motion pictures on the main page. When using Microsoft Internet Explorer, administrators must allow the installation of a plug-in provided by the VPort prior to viewing motion pictures.



In Modem Mode

To dial the VPort, you need to establish a dial-up connection with the PC, in which the dial-up phone number is the same as the phone line connected to the VPort. After the connection is successfully established, open the Web browser and link to <http://200.1.1.1>. In this case, the VPort runs as a dial-up server and assigns the IP address of 200.1.1.100 to the PC at the other end. When the authentication message window appears, type **root** for user name and use VPort's serial number for the default password. The point-to-point connection allows users to connect to the VPort for surveillance purpose at any time.

After the connection is successfully established, follow the instructions described in the next chapter, **Accessing VPort 2110 Video Server for the First Time**.

Mounting VPort 2110

Panel Mounting

Users can mount the VPort 2110 Video Server directly to the wall using 2 screws that have diameter larger than 7 mm.

DIN-Rail Mounting

In addition, Moxa provides a 35 mm DIN-Rail mounting option for use in industrial environments. The DK-35 DIN-Rail mounting kit can be ordered from Moxa.



3

Accessing VPort 2110 Video Server for the First Time

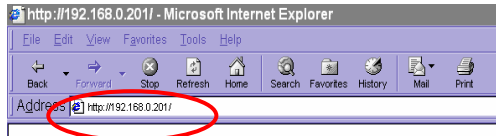
This chapter includes information about how to access VPort 2110 Video Server for the first time. The following topics are covered:

- ❑ **Accessing VPort 2110 Video Server**
 - Opening Your Browser
 - Authentication
 - Installing the Plug-in Application
- ❑ **Functions Featured on the Main Page**
 - Image Mode and Text Mode
 - Logo and Host Name
 - Video Quality Selection
 - Image Size Selection
 - System Configuration
 - Relay Output Control
 - Motorized (PTZ) Camera Control
 - Custom Camera Commands

Accessing VPort 2110 Video Server

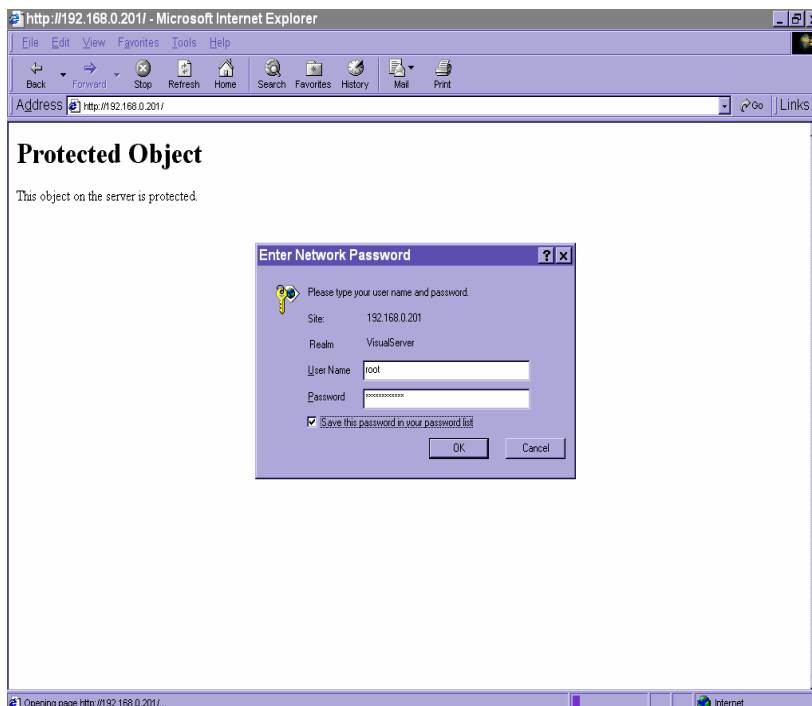
Opening Your Browser

Open your browser, type the VPort's IP address in the **Address** box, and then press **Enter**.



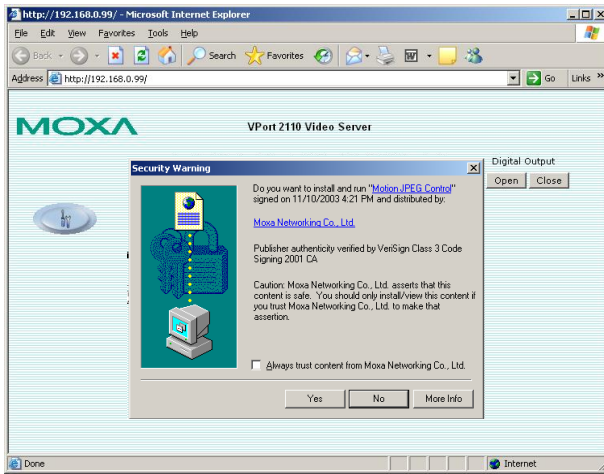
Authentication

After opening your browser and type the VPort's IP address, a dialogue window will appear, asking you to enter the username and the password. When accessing the VPort for the first time, administrators must enter root as the username, and the MAC address, in capital letters, as the password. You can find the MAC address on the VPort's label. Primary users will be allowed to access the VPort as soon as the administrator finishes adding user profiles. Upon successful authentication, the VPort's main page will be displayed.



Installing the Plug-in Application

If you access the VPort for the first time via a browser that supports server push (e.g., Netscape), the video images will be displayed directly. If you are using Windows' Internet Explorer as your browser, you will be asked to install a new plug-in application provided by the VPort. This plug-in application has been registered for certification, and is used to display video images via Internet Explorer. Click on **Yes** to install the plug-in application. If your browser does not allow the user to install the plug-in, change the security option to a lower level, or contact your network supervisor for assistance.

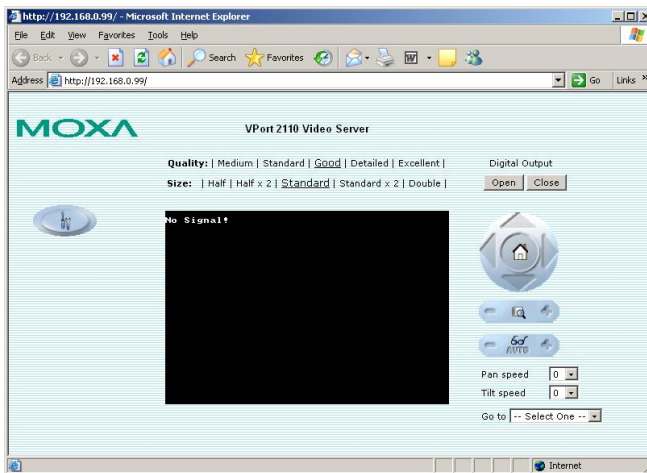


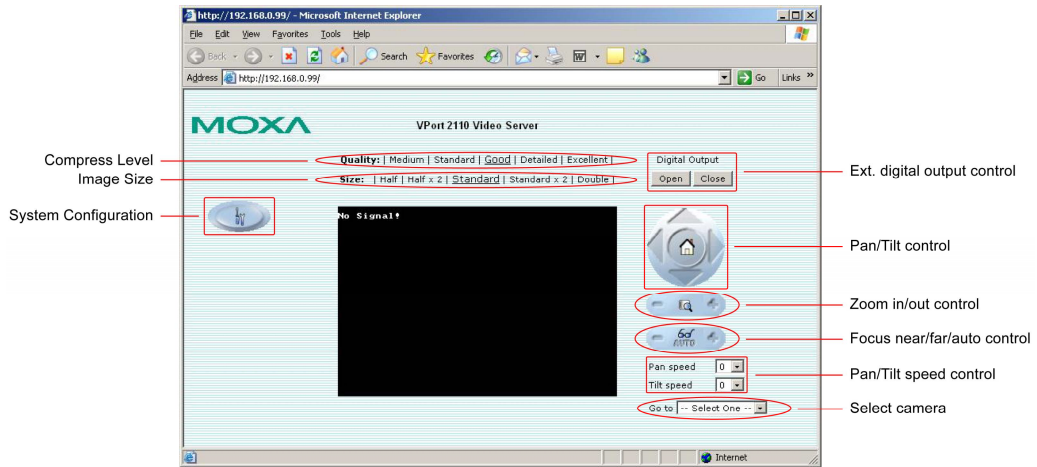
Functions Featured on the Main Page

Image Mode and Text Mode

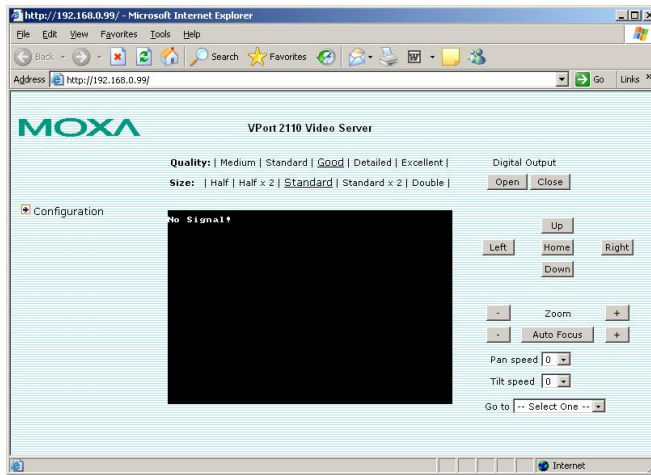
Basic functions are displayed on the VPort's main page. The first figure below shows image mode, which has a better visual effect. The second figure shows text mode, which provides a shorter download time. The main page may look different depending on the PTZ driver or the authorization of the user.

Image Mode





Text Mode



Logo and Host Name

The default logo is Moxa's logo, and the host name is VPort 2110 Video Server. For customized usage, the administrator can change the layout of the homepage from the Homepage Layout page.

Video Quality Selection

There are 5 options for video quality: Medium, Standard, Good, Detailed, and Excellent. Different video quality selections result in different sized JPEG files. The table below is an example.

Video Quality	JPEG File Size
Medium	9.3 KB
Standard	11.15 KB
Good	13.76 KB
Detailed	16.35 KB
Excellent	20.3 KB

Image Size Selection

There are 5 options for selecting image sizes:

Video Size (unit: pixels)	NTSC	PAL
Half	176 × 112	176 × 112
Half × 2	352 × 240	352 × 288
Standard	352 × 240	352 × 288
Standard × 2	704 × 480	704 × 576
Double	704 × 480	704 × 576



ATTENTION

Half × 2 consumes the same file size and bandwidth as **Half**, but has the same resolution as **Standard**. For this reason, the visual effect of **Half × 2** is worse than **Standard**. Likewise, **Standard × 2** consumes the same file size and bandwidth as **Standard**, but has the same resolution as **Double**. For this reason, the visual effect of **Standard × 2** is worse than **Double**.

System Configuration

There is a button or text link on the left side of the system configuration window that only appears on the administrators' main page. For detailed system configuration instructions, refer to Chapter 4, **System Configuration**.

Relay Output Control

VPort 2110 Video Server has 1 DI/DO for external devices, such as sensors and alarms. If external devices are attached to the digital output, administrators or permitted users can click on **Open** to short the **Common** and **Normal Open** pins of the digital output, or click on **Close** to short the **Common** and **Normal Close** pins of the digital output.

Motorized (PTZ) Camera Control

If a serial device, such as a motorized camera, is attached and correctly configured to the COM port, the control panel will appear on the permitted users' main page. The effective buttons will change color when the cursor is passed over the button. Users can control the pan, tilt, zoom, and focus functions of motorized cameras. The home button is used to return the camera to the center position if the camera supports this command. Apart from near and far control for focus, an **AUTO** button is provided for setting auto focus mode. To move the motorized camera more precisely, the speed control for pan and tilt allows users to fine tune the aiming position. Users can also click directly on any point in the image to force the motorized camera to focus on that point, or select a preset location from the drop-down. The list of preset locations is pre-defined by administrators. The detailed configurations are described in the related section in Chapter 4, **System Configuration**.

Custom Camera Commands

There are a maximum of five buttons that can be set to custom commands for users to control the attached motorized (PTZ) cameras, in addition to the default pan, tilt, zoom, and focus controls. Custom commands are set up by administrators, and are used for functions such as activating or deactivating the wiper of dome, according to the attached motorized device's User's Manual of.

System Configuration

After installing the hardware, the next task required is to configure VPort 2110's settings. There are 3 configuration methods: via web access, via FTP, and via Telnet.

This chapter includes the following sections:

- ❑ **System Configuration Via Web Access**
 - Using Setup Wizard
 - Using Application Wizard
 - System
 - Security
 - Network
 - Video
 - COM port
 - Application
 - Homepage Layout
 - View log file
 - View parameters
 - Factory default
- ❑ **System Configuration Via FTP**
 - CONFIG ini
- ❑ **System Configuration Via Telnet**
 - Telnet Commands
 - System core debugging
 - Monitor changed status of digital inputs
 - Stop information dumping
 - Query status of digital inputs
 - Set digital outputs
 - Erase snapshots stored in Flash memory
 - Erase logo and graphic buttons
 - Skip installation at next boot
 - Reset network for new settings
 - Restore factory default settings
 - Reset system

System Configuration Via Web Access

System configuration can be easily done remotely from Internet Explorer via the Web Server. There are two wizards, in addition to classified categories of system configurations, which provide user-friendly instructions to facilitate the setup task. Alternatively, administrators may type the system configuration URL, "http://<IP address of Video Server>/setup/config.html", to enter the configuration page directly. Administrators who want to set certain options through the URL should refer to the relevant section in the Chapter 6, URL Commands for advanced functions.

There are 5 purposes for the system configuration:

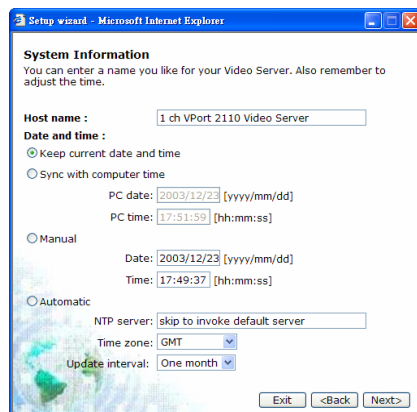
1. Since VPort 2110 Video Server is a networked video server, administrators should run the "Setup wizard," or at least configure "Security," "Network," and "Video."
2. To support external serial port devices, configure "COM port" and then "Camera Setting" under "Video."
3. To utilize the built-in security and web attraction features, run the "Application wizard" or configure "Application" and "Demo."
4. Administrators can adjust the system date and time under "System," or configure different homepage layouts by configuring "Homepage layout."
5. Video Server also provides other system maintenance options, including "View log file," "View parameters," and "Factory default."

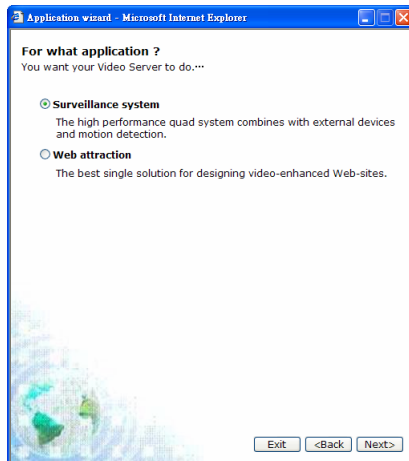
Using Setup Wizard

The setup wizard will guide the administrator to enter the required information, including:

1. Host name
2. Current date and time
3. Administrator's password
4. Video configuration and captions
5. Network settings.

The administrator can exit the setup wizard at any time to preserve the current configuration. The setup wizard will give the administrator the option to reboot to validate the changes, or the administrators can decide to reboot later.

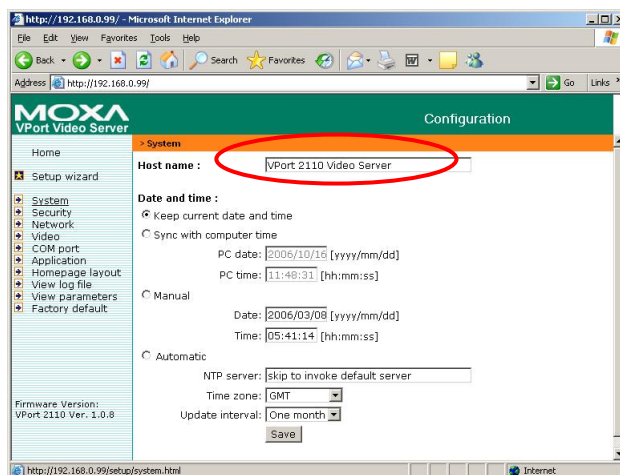




System

Host name

The host name will appear as the homepage title of the main page and over the video window on the main page. The maximum string length is 40 characters or 20 characters in double-byte-character systems, such as Chinese or Japanese systems.

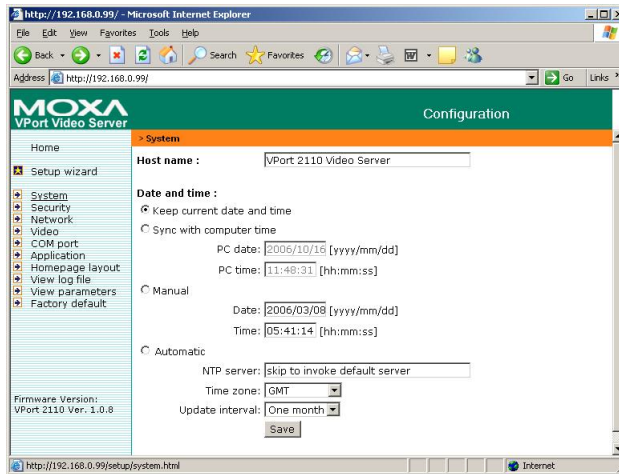


Date and Time

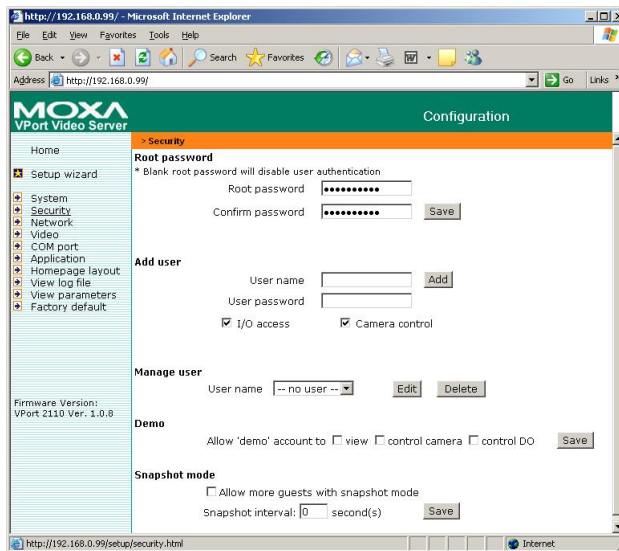
The default setting for Date and Time is **Keep current date and time**. You may also choose from one of the following date and time configuration options:

1. The easiest way to adjust the date and time is to make the VPort **Sync with computer time**.
2. Select the **Manual** option if you wish to set the date and time manually by entering new settings.
3. Select the **Automatic** option to make the VPort synchronize automatically with timeservers over the Internet every month. However, synchronization may fail if the assigned **NTP server** cannot be reached, or the VPort is connected to a local network. Leaving the **NTP server** blank will force the VPort connect to default timeservers. Enter either the Domain name or IP address format of the timeserver as long as the DNS server is available. Do not forget to set the **Time zone** for local settings. Refer to Appendix G for your region's time zone.

Click on **Save** to validate changes.



Security



Root password

To change the administrator's password, type the new password in both the **Root password** box and **Confirm password** box. The passwords you enter will be displayed in asterisks for security reasons. The maximum string length for a password is 16 characters. After clicking on **Save** to validate the new password, a window will open to ask the administrator for the new password to access the VPort.

Add user

To add a new user, type the new user's name in the **Username** box, the password in the **User password** box, and select authorization level by checking **I/O access** or **Camera control**. Click on **Add** to insert the entry. The VPort 2110 Video Server has a total of 20 user accounts. Each user can be given independent access right of the external I/O access and camera control.

Manage user

If the access rights of some users need to be changed, find the user name from the drop down list and click on **Edit**. A new window will appear for administrators to change the password and select a different authorization. Administrators can also delete the selected user by clicking on **Delete**. A message window will open next to confirm.

Demo

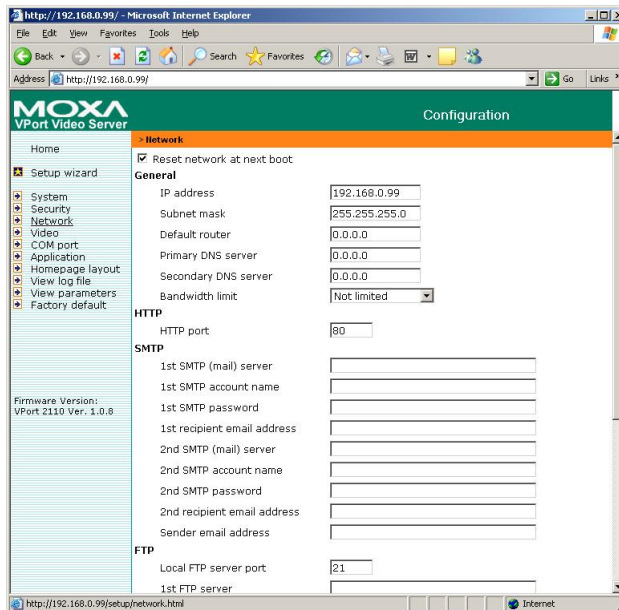
VPort 2110 Video Server provides a demonstration mode to allow general access for demonstration purposes. To set up the demonstration mode, administrators must choose the services to be permitted. If administrators select the **view** option, users may use **demo** as the username to access the VPort. In this case, leave the password field blank. Administrators also can select **control camera** or **control DO** options for the demo account. Separating the demo account from the primary users can prevent interference with normal operations.

Snapshot mode

A maximum of 20 users can view VPort's images at the same time. Administrators can select the **Allow more guests with snapshot mode** option to enable the snapshot mode for more users. In this case, when the number of users exceeds 20, users will see the main page in snapshot mode instead of seeing normal video images. Snapshot mode is very useful for web attraction. In this case, configure the **Snapshot interval** to achieve better performance. Increasing the time interval between snapshots allows more users to use snapshot mode.

Click on **Save** to validate changes.

Network



Reset network at next boot

To eliminate incautious mistakes during installation, VPort 2110 Video Server will be in installation mode whenever it starts up, unless **Reset network at next boot** is disabled.

1. **Reset network at next boot**

VPort 2110 Video Server will skip installation at the next boot, and the IP Installer program will not show this VPort 2110. In this case, the VPort cannot be accessed and reconfigured over the network using the IP Installer program if no one remembers the IP address, unless the VPort's reset button is used first to restore factory default settings. The advantage of enabling the "Use this IP whenever the system boots" option is that the VPort will automatically operate normally after being restarted after a power loss.

2. **Reset network at next boot**

In this case, the installation process must be run again when system reboots. This is the default setting.



ATTENTION

You can ignore this option if you are using the Modem Dial-up connection.

General

Administrators may need to modify the network settings to connect to an existing network, since the subnet mask in some broadband service may differ from the default value of 255.255.255.0, and service providers may assign more specific network settings. Administrators should change the configuration to the settings given by the service provider. The configuration may include **IP address**, **Subnet mask**, **Default router**, **Primary DNS server**, and **Secondary DNS server**. After changing network settings, make sure to uncheck the "Reset network at next boot option" to avoid the installation starting up again the next time the system restarts. Otherwise, existing network settings will be erased at the next start.

In addition, administrators can limit the bandwidth used by a VPort 2110 Video Server according to priority and importance of location. Limiting bandwidth is useful for balancing network utilization when multiple VPorts are installed on the same network. This method is more effective than just changing image quality, and is able to achieve better performance with adequate image size and quality.

HTTP

For security or network integration, administrators can hide the server from the general HTTP port by changing the default HTTP port of 80 to a different port number. Administrators should have enough network knowledge to change the default port.

SMTP

VPort 2110 Video Server not only plays the role of server, but also actively connects to outside servers to send alarm messages or snapshots. If the administrator has set up some applications in either event mode or sequential mode, the VPort will send out snapshots once these conditions occur.

1. To activate the e-mail function, enter correct settings for **SMTP (mail) server's domain name/IP address** and **Recipient email address**.
2. **Secondary SMTP (mail) server's domain name/IP address** and **Secondary email address** are provided for a backup connection when the primary SMTP server fail.
3. **Return email address** is the address the email is returned to when the SMTP server rejects email due to failure. Some ISPs may reject the email if the address is invalid.

**ATTENTION**

If the settings are correct when the VPort starts up, it will send out a system log via e-mail instead of uploading the log via FTP. Note that if the **Return email address** is not set, the e-mail system will not work properly.

FTP

FTP is the other means available for VPort 2110 Video Server to send out alarm messages and snapshots. To send the system log files described in the above paragraph via FTP, the SMTP server should be erased.

1. **Local FTP server port** can also be changed to a setting different from the default setting of 21. Administrators should have enough network knowledge to change the default port.
2. Administrators must enter correct **Primary FTP Server**, **Primary FTP user name**, and **Primary FTP password**.
3. **Primary FTP remote folder** is the sub-folder in the remote FTP server.
4. If the remote FTP server's port is changed to a setting different from 21, make sure to set the real port to **Primary FTP server port**.
5. If the local network is protected by a firewall to prevent it from initiating an FTP connection from the remote FTP server, you may be able to connect to the FTP server, but be unable to place a file on the server due to data channel connection failure. Check **Primary FTP passive mode** for a passive transfer solution.
6. Another set of **Secondary** server settings is also provided for a backup connection.

**ATTENTION**

In either e-mail or FTP, the primary server information should be entered first. If the primary server is not set, the related FTP or email will be cancelled. Note that it may take time to connect to the secondary server after the first one fails, and it may affect some applications when conditions occur too often.

Save the modification

After all necessary modifications are made, click on **Save** to store the modifications. A warning message will appear for confirmation. After clicking on **OK**, the VPort will automatically restart. If the **Reset network at next boot** option is checked, perform the software installation again. Otherwise, the VPort will boot up automatically using the new configuration settings.

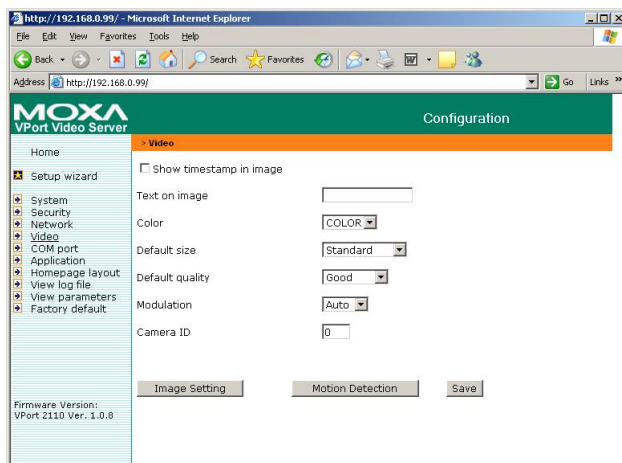
**ATTENTION**

If you make any changes to the settings in this web page, the system will restart to validate those changes. Make sure that every field is correctly typed before clicking on Save. If the VPort fails to respond due to incorrect settings, perform the restore procedures and run the software installation.

**ATTENTION**

Administrators should take note that the basic network settings, including IP address, subnet mask, default router, and DNS servers, should be set to factory defaults before switching the network interface from “Ethernet” to “modem” or from “modem” to “Ethernet.”

Video



Show Timestamp in image and Text on Image

When these options are enabled, **Timestamp** and **Text on image** will be shown on the image for reference. The timestamp is captured from the Video Server's date and time that is maintained by an on-board real-time clock.

Color, Default size, and Default quality

The **Color** setting depends on the connected camera. The “B/W” option can speed up the encoder. The **Default size** option is the default size of the video window when the user first connects to the Video Server. The **Default quality** option is the default quality when users first connect to the VPort.

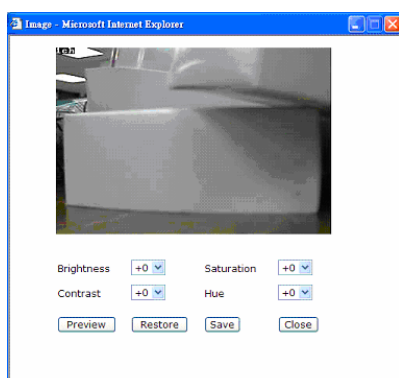
Modulation

There are 3 types of **Modulation**. Administrators can set the auto-detected condition during initialization by selecting **Auto**, but can still set it manually by selecting **NTSC** or **PAL**.

Camera ID

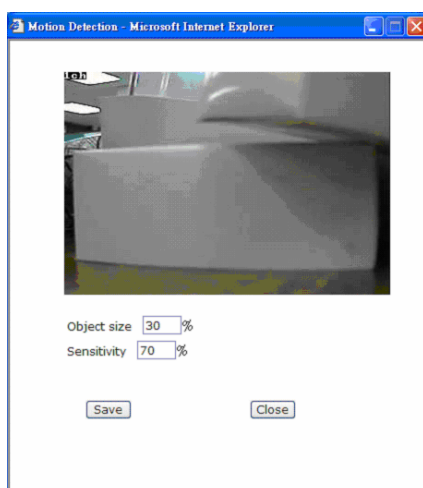
If you use a motorized (PTZ) camera, you may need to set the Camera ID of this PTZ Camera for using the PAN/ TILT/ ZOOM functions.

Image Setting



To adjust image settings for the best visual quality, click on Image Setting to open a motion picture window. Four fields need to be configured, including **Brightness**, **Contrast**, **Hue**, and **Saturation**. Each field has eleven levels, ranging from -5 to +5. While adjusting, administrators can click on **preview** to see if the settings are appropriate before clicking on **Save**. If the adjustment is not satisfactory, administrators can click on **restore** to restore the original settings. After the configuration is done, click on **Close** to close this window. If the configurations are changed without saving, they will only be used until the next time system starts up.

Motion Detection



Each channel has its own separate motion detection settings. The settings, which include **Object size** and **Sensitivity**, allow administrators to fine tune the VPort to fit the environment:

1. **Object size** sets the minimum size of objects whose motion will be detected. (E.g., if Object size = 30%, then the system will only detect the motion of objects that occupy an area larger than 30% of the total monitored area; the motion of objects with size less than 30% of the monitored area will NOT be detected.)
2. **Sensitivity** sets the measurable difference between two sequential images to indicate motion.

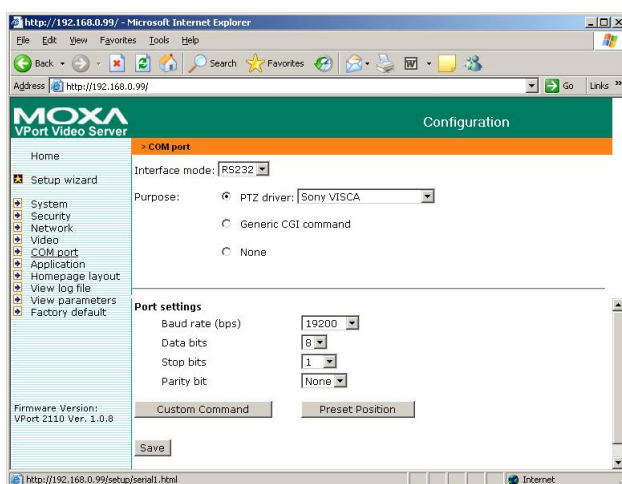
A larger object size and lower sensitivity will cause the VPort to ignore small variations in images. When the motion amplitude of some objects in the monitored screen exceeds the settings, a white letter **M** with red background color will appear in the upper-right corner to the window.

**ATTENTION**

Motion detection is provided as a reference because it is environment-dependent. When the settings are configured to be very sensitive to motion, some triggered events might be false alarms, since in fact there is only a tiny difference between sequential images. False alarms can be triggered by the flashing of florescent lights, shifting of shadows, etc.

Save the modification

After all necessary modifications are made, click on **Save** to store the modifications. A warning message will appear for confirmation. After clicking on **OK**, the VPort will automatically restart. If the **Reset network at next boot** option is checked, perform the software installation again. Otherwise, the VPort will boot up automatically using the new configuration settings.

COM port**Interface mode**

The COM port supports 2 serial interfaces, although only one interface can be used at a time. Depending on the interface used by the attached device, administrators must set the **Interface mode** to either RS-232 or RS-485.

**ATTENTION**

RS-232 interface is used via the DB9 COM port, and RS-485 interface is used via the GPIO. These 2 interfaces cannot be used at the same time.

Purpose

The COM port connection has 3 purposes:

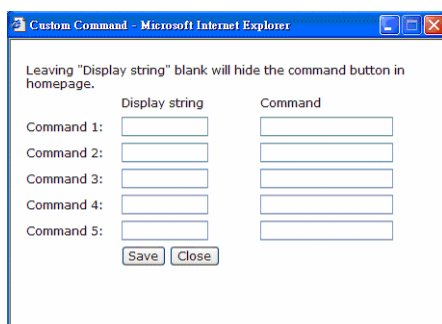
1. If the attached device is a PTZ camera, administrators must select the correct PTZ model under PTZ driver options, since each PTZ camera has its own protocols for the PTZ functions. Refer to Appendix B, **Settings for Supported PTZ Cameras**, to find out the PTZ cameras that MOXA VPort 2110 Video Server supports. If the attached PTZ camera is not supported by the VPort, administrators can select Custom Camera to enter the proprietary commands for pan, tilt, zoom, and focus control.

2. If the attached device is not a PTZ camera, but another serial device, such as a video multiplexer, etc., administrators can select the **Generic CGI command** to control the device via CGI commands. For external device control, refer to Chapter 5, **Advanced Applications**, under the **URL Commands for DI/DO and Camera's Actions settings** section for more details.
3. The default setting is **None**, which means that no other device is connected to the COM port.

Port Settings

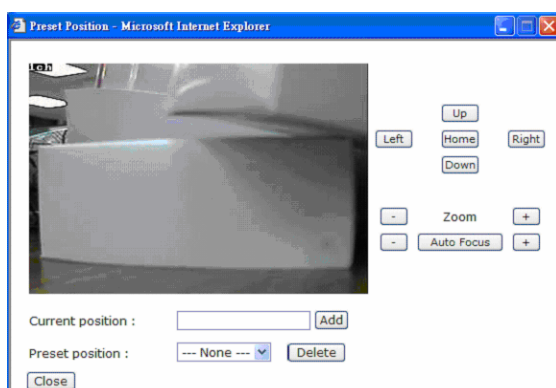
After selecting the correct PTZ driver or Generic CGI command option, the next thing administrators must do is configure Port settings, including Baud rate, Data bits, Stop bits, and Parity bit. If the attached device is a PTZ camera, refer to Appendix B, **Settings for Supported PTZ Cameras**, for default settings of the supported PTZ cameras.

Custom command



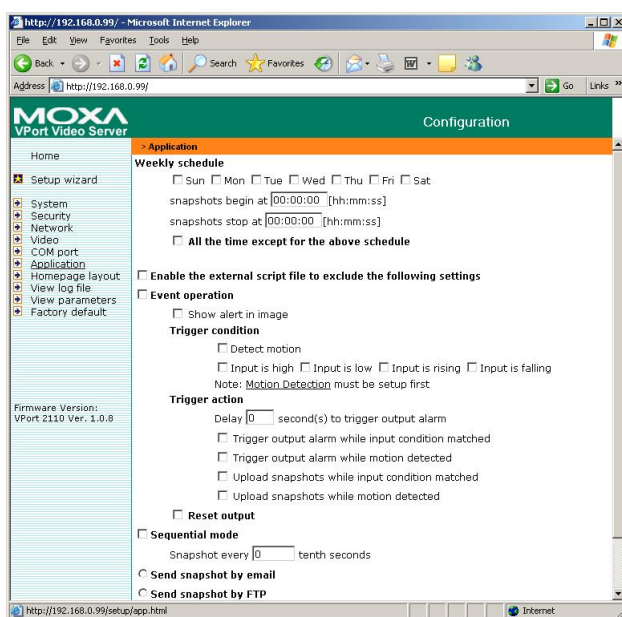
VPort 2110 Video Server provides 5 custom commands in addition to the general pan, tilt, zoom, and preset functions. Administrators can click on **Custom Command** to configure, and refer to the manual enclosed with the attached PTZ camera to set up frequently-used functions. The Command should be entered in ASCII format. The VPort will translate the commands into binary code and send them out through the serial port. For instance, a text string of **8101ABCDEF** will be translated into five bytes of hexadecimal **81**, **01**, **AB**, **CD**, and **EF**. The maximum length of a command string is 60, which is equivalent to 30 hexadecimal bytes. The **Display string** is for the text on the command buttons and should be less than 8 characters. If **Custom Camera** is selected, there will be more commands for PTZF that relate to custom camera.

Preset Position



Administrators can use the **Preset Position** function to set up the behavior of the PTZ camera in advance, and then users can directly move the camera's lens to the preset position without the need to control the pan, tilt, and zoom buttons.

Application



VPort 2110 Video Server provides 4 major applications.

1. **Weekly schedule:** Administrators can set up the Application schedule by week.
2. **External script files:** For advanced applications, administrators can program command scripts, which can be uploaded to the VPort 2110 Video Server.
3. **Event operation:** Administrators can set trigger conditions by selecting **Detect motion**, or **Input is high**, etc., options, and trigger actions by selecting **Trigger output alarm while input condition matched**, etc., options.
4. **Sequential mode:** Administrators can set the sequential snapshot mode to send the snapshot by time interval.

Administrators can use combinations of options on the application web page to perform various useful security applications. Although most settings will be done automatically by the **Application Wizard**, administrators can also make adjustments to the settings from this page.

To set up the 4 applications that VPort 2110 Video Server provides, administrators must have a certain level of knowledge about the setting items listed in the **Application** web page. Below is the table that separates the setting items into 3 levels. Higher-level settings will not be activated unless lower-level items are checked.

Level 1	Level 2	Level 3					
<input type="checkbox"/> Weekly schedule <input type="checkbox"/> All the time except for the above schedule		<input type="checkbox"/> Sun <input type="checkbox"/> Mon <input type="checkbox"/> Tue <input type="checkbox"/> Wed <input type="checkbox"/> Thu <input type="checkbox"/> Fri <input type="checkbox"/> Sat snapshots begin at [hh:mm:ss] snapshots stop at [hh:mm:ss]					
	<input type="checkbox"/> Enable the external script file to exclude the following settings						
	<input type="checkbox"/> Event operation	<input type="checkbox"/> Show alert in image					
		Trigger condition <table border="1"> <tr><td><input type="checkbox"/> Detect motion</td></tr> <tr><td><input type="checkbox"/> Input is high</td></tr> <tr><td><input type="checkbox"/> Input is low</td></tr> <tr><td><input type="checkbox"/> Input is rising</td></tr> <tr><td><input type="checkbox"/> Input is falling</td></tr> </table>	<input type="checkbox"/> Detect motion	<input type="checkbox"/> Input is high	<input type="checkbox"/> Input is low	<input type="checkbox"/> Input is rising	<input type="checkbox"/> Input is falling
	<input type="checkbox"/> Detect motion						
	<input type="checkbox"/> Input is high						
	<input type="checkbox"/> Input is low						
	<input type="checkbox"/> Input is rising						
	<input type="checkbox"/> Input is falling						
		Trigger action <table border="1"> <tr><td>Delay <input type="checkbox"/> second(s) to trigger output alarm</td></tr> <tr><td><input type="checkbox"/> Trigger output alarm while input condition matched</td></tr> <tr><td><input type="checkbox"/> Trigger output alarm while motion detected</td></tr> <tr><td><input type="checkbox"/> Upload snapshots while input condition matched</td></tr> <tr><td><input type="checkbox"/> Upload snapshots while motion detected</td></tr> </table>	Delay <input type="checkbox"/> second(s) to trigger output alarm	<input type="checkbox"/> Trigger output alarm while input condition matched	<input type="checkbox"/> Trigger output alarm while motion detected	<input type="checkbox"/> Upload snapshots while input condition matched	<input type="checkbox"/> Upload snapshots while motion detected
Delay <input type="checkbox"/> second(s) to trigger output alarm							
<input type="checkbox"/> Trigger output alarm while input condition matched							
<input type="checkbox"/> Trigger output alarm while motion detected							
<input type="checkbox"/> Upload snapshots while input condition matched							
<input type="checkbox"/> Upload snapshots while motion detected							
	<input type="checkbox"/> Reset output						
<input type="checkbox"/> Sequential mode	Snapshot every <input type="checkbox"/> tenth seconds						
<input type="checkbox"/> Send snapshot by email							
<input type="checkbox"/> Send snapshot by FTP	<input type="checkbox"/> FTP put snapshots with date and time suffix						

Weekly schedule

The Weekly schedule is provided for daily security application. Administrators can select any weekday from Monday to Friday with the daily schedule set from 9 am to 6 pm when no one is available to perform event checking. If the security system is installed in an office for which no one is present on nights or weekends, administrators can still set the time period as above, from 9 am to 6 pm, but remember to select **All the time except for the above schedule** to let the program run during nights and weekends.



ATTENTION

Either “Weekly schedule” or “All the time except for the above schedule” must be selected, or the applications described in the following sections will not work properly.



Enable the external script file to exclude the following settings

Administrators can write a script named **SCRIPT.TXT** to match the additional software according to the **Command Script for DI/DO and Camera's Actions Setting** section from Chapter 5. After uploading this script to the VPort via FTP, check the option **Enable the external script file to exclude the following settings**. Otherwise the VPort will operate according to the settings under **Enable the external script file to exclude the following settings** option.

Event operation

Event operation is for setting security applications.

1. Trigger Condition

- a. **Show alert in image.** VPort 2110 Video Server can show the event trigger condition in the video image on the homepage. If motion is detected (based on the motion settings), an  will appear on the upper-right corner of the image. As long as **Show alert in image** is checked, the  will appear in the image to indicate that motions has been detected. If there are any sensors attached to the digital inputs, administrators can set the state to fire alarm.



ATTENTION

The option **Show alert in image** may be set when running the application wizard or configuring motion detection. Administrators should manually uncheck this option if no indication of motion detection is needed in the image.

- b. **Detect Motion.** Checking this box will enable Video Motion Detection, which is set in the Video configuration web page (or you can click on the **Motion Detection** link below to configure the appropriate parameters) as the trigger condition.
- c. **Digit Input.** There are 4 statuses of Digit Input, including **Input is High**, **Input is Low**, **Input is Rising**, and **Input is Falling**. The edge trigger like Rising or Falling is generally used to detect the emerging signal from the external sensor.

2. Trigger Action

Once an event occurs, administrators can select the **Delay second(s) after event** option to drive a device attached to the digital outputs several seconds after the event happens and/or send snapshots that are taken right at the moment.

- a. **Trigger output alarm.** Administrators can set the trigger output alarm when the DI or Video Motion Detection conditions are met.
- b. **Upload snapshot.** Administrators can set the upload snapshot action when the DI or Video Motion Detection conditions are met.



ATTENTION

VPort 2110 Video Server will take 3 JPEG snapshot images: pre-event, the moment of event, and post-event for video channel when the trigger condition is met. Three snapshots of the channel can also be downloaded via FTP or HTTP URL (refer to the "Download Event-triggered Snapshots" section from Chapter 5 for more details).

- c. **Reset output.** When the digital output alarm is triggered, administrators can check this **Reset output** option, and then click on **Save** to reset the status of digital output.

Sequential Mode

With this feature, VPort 2110 Video Server can upload snapshots periodically to an external E-mail or FTP server as a live video source. The interval can be set from a tenth of a second to several hours in **Snapshot every** **tenth seconds**. The external E-mail or FTP server must be set up in the Network configuration page.

Send Snapshot by Email or FTP

Snapshots taken by either event operation or sequential mode can be sent by **E-mail** or **FTP**, which are set in the Network configuration page. If email is chosen, the snapshots of the video channel will be attached to the emails. If FTP is chosen, administrators can choose to add date and time in the file name of the snapshots by checking **FTP put snapshots with date and time suffix**. If the snapshots are used as the live video source, the date and time suffix can be eliminated to update the same source file.



ATTENTION

In Sequential mode, the VPort will send out snapshots according to interval and period settings. If snapshot files are intended for quick updates, it is better to skip the date and time suffix, in which case the file name will be video.jpg. If the snapshots are used for occasional monitoring, suffixing with date and time can help administrators easily classify the snapshots.

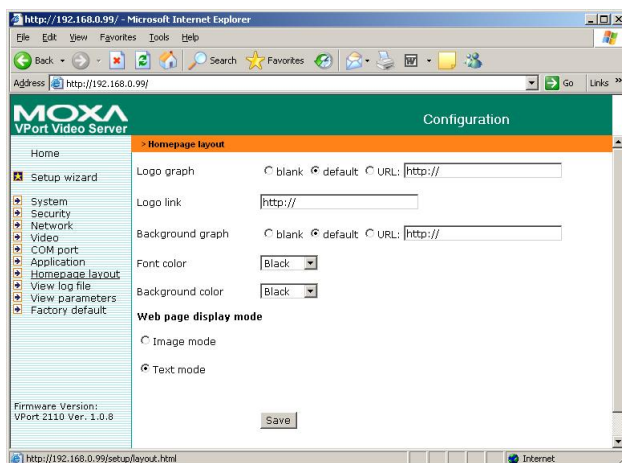


ATTENTION

Compared to the FTP method, email will induce more delay, although email can notify users more promptly.

Homepage layout

VPort 2110 Video Server allows administrators to customize the layout of the Video Server's homepage.



Logo figure

1. Select the blank option to hide the logo figure, which appears in the upper-left corner of the homepage.
2. The “default” logo is the MOXA logo.
3. An external logo or image can be used by selecting the **URL** option, and typing the url for the image in the text input box.

Logo link

Administrators set up the Logo with a **Logo link**, so that visitors are directed to another web address when they click on the logo.

Background graph

As with **Logo graph**, **Background graph** gives administrators the ability to customize the background as **blank**, **default**, or an external image by selecting the **URL** option, and typing the url for the image in the text input box.

Font and Background color

The **Font color** and **Background color** can be chosen from sixteen custom colors.



ATTENTION

The **Background color** option is active only when **Background graph** is set as **blank**.

Web page display mode

There are two homepage display modes. One is **Image mode**, which uses icons to link to the various functions; the other is **Text mode**, which uses mostly text to link to the various functions.

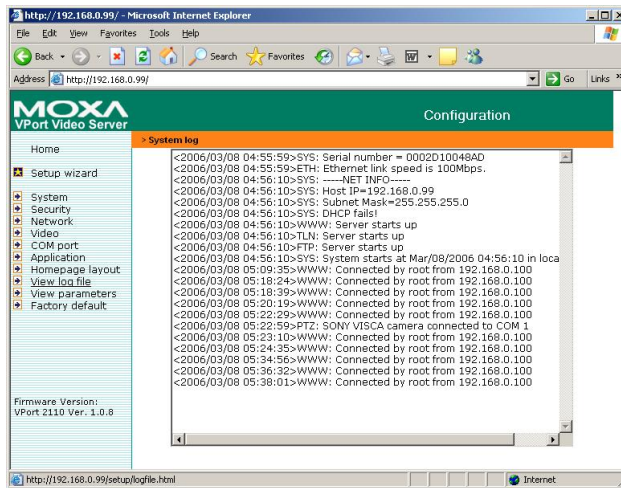


ATTENTION

See the **Customize graphics in homepage** section from Chapter 5 to see how to replace the default images for the Video Server's log, background, and buttons.

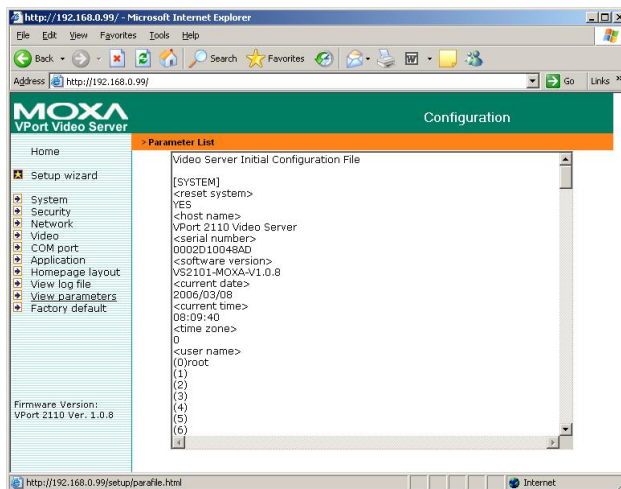
View log file

The system log contains useful information, including current system configuration and activity history with timestamp for tracking.



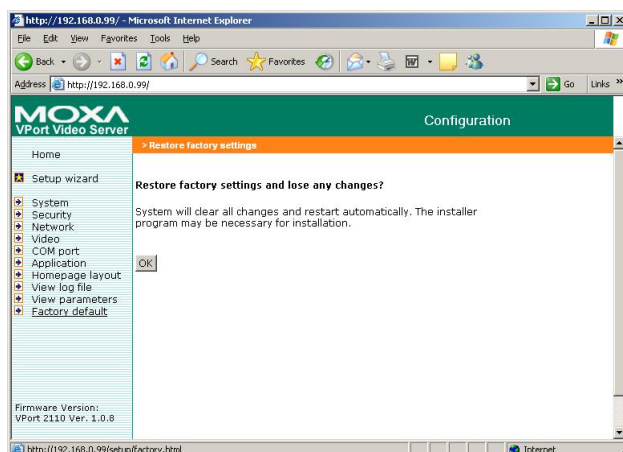
View parameters

Clicking on "View parameters" allows you to view all system parameters, which are listed by category. The content is the same as CONFIG.INI of VPort 2110 Video Server.



Factory default

This function is used to restore the Video Server to its factory default settings, so that any changes that were made previously will be lost. After clicking **OK**, the system will restart. Note that it will take some time for the restore action to finish. You will need to run the software installation program to set up the network.



System Configuration Via FTP

CONFIG.INI

FTP can be used to configure VPort 2110 Video Server much more quickly than configuring from web browser, particularly when configuring multiple Video Servers. To configure a Video Server via FTP, first download the parameter file, CONFIG.INI, customize each field, and then upload the file to the Video Server to install the new settings. To log into the FTP daemon, enter “root” as the user name, and use the same password used when connecting to the Web server. The MAC address (no dash, all upper case) of Video Server is the password for initial access.

The CONFIG.INI file has eight categories: **[SYSTEM]**, **[LAYOUT]**, **[NETWORK]**, **[VIDEO]**, **[SERIAL1]**, **[SERIAL2]**, **[ALERT]**, and **[DEMO]**. The category names in square brackets should be in upper case. The item names in angle braces should be in lower case. Some items related to disable/enable should use the keywords “YES”/“NO”. The number zero (0) entry in <user name> and <user password> is for administrators, i.e. “root”. Video Server will restart automatically as soon as the file is uploaded and accepted. If administrators want to cancel the reboot procedure after putting config.ini via FTP, then set the first item, <reset system>, to NO. But it will take effect only once, and show YES in the download config.ini file the next time.

A sample CONFIG.INI is shown in the table below. The text in *italics* describes the characteristics of the field, and the ***bold italic characters*** are the options for the field.

Video Server Initial Configuration file	
[SYSTEM]	
<reset system>	
YES	<i>or NO</i>
<host name>	
VPort 2110 Video Server	<i>string with maximum of 38 characters</i>
<serial number>	
0002D1000972	<i>read-only</i>
<software version>	
VS2101-MOXA-V1.0.2	<i>read-only</i>
<current date>	
2003/01/01	<i>read-only</i>
<current time>	
12:34:56	<i>read-only</i>
<time zone>	

0	<i>from 12 to -12</i>
<user name>	
(0)root	<i>read-only</i>
(1)	<i>string with maximum of 14 characters</i>
(2)	<i>the rest are the same as above</i>
(3)	
(4)	
(5)	
(6)	
(7)	
(8)	
(9)	
(10)	
(11)	
(12)	
(13)	
(14)	
(15)	
(16)	
(17)	
(18)	
(19)	
(20)	
<user password>	
(0)0002D1000972	<i>string with maximum of 14 characters</i>
(1)	<i>the rest are the same as above</i>
(2)	
(3)	
(4)	
(5)	
(6)	
(7)	
(8)	
(9)	
(10)	
(11)	
(12)	
(13)	
(14)	
(15)	
(16)	
(17)	
(18)	
(19)	
(20)	
<more guests enabled>	
NO	<i>or YES to enable snapshot mode</i>
<more guests interval>	
0	<i>snapshot interval in seconds</i>
<language>	
0	

[LAYOUT]	
<layout type>	
1	<i>image mode or 0 for text mode</i>
	<i>0-black, 1-white, 2-green, 3-maroon, 4-olive, 5-navy, 6-purple, 7-gray, 8-yellow,</i>
1	<i>9-lime, 10-aqua, 11-fuchsia, 12-silver,</i>
<background color>	<i>13-red, 14-blue, 15-teal,</i>
0	
<logo type>	
1	<i>default image, or 0 for blank, or 2 from URL</i>
<background type>	
1	<i>default image, or 0 for blank, or 2 from URL</i>
<logo source>	
http://	<i>URL of logo type 2, maximum of 80 characters</i>
<background source>	
http://	<i>URL of logo type 2, maximum of 80 characters</i>
<logo link>	
http://	<i>reference link of logo, max. of 80 characters</i>
<com speedlink name>	<i>Name of custom PTZ commands</i>
(0)	<i>string with maximum of 8 characters</i>
(1)	<i>string with maximum of 8 characters</i>
(2)	<i>string with maximum of 8 characters</i>
(3)	<i>string with maximum of 8 characters</i>
(4)	<i>string with maximum of 8 characters</i>
[NETWORK]	
<install enabled>	
YES	<i>reset IP whenever system boots or NO</i>
<ppp enabled>	
YES	<i>obsolete</i>
<ethernet address>	
00-02-D1-00-09-72	<i>read-only</i>
<host ip>	
192.168.0.207	<i>standard IP format</i>
<subnet mask>	
255.255.255.0	<i>standard IP format</i>
<gateway ip>	
0.0.0.0	<i>standard IP format</i>
<primary name server>	
0.0.0.0	<i>standard IP format</i>
<secondary name server>	
0.0.0.0	<i>standard IP format</i>
<ntp enabled>	
NO	<i>or YES</i>
<network timing server>	
	<i>IP address or domain name</i>
<smtp mail server>	
	<i>IP address or domain name</i>
<mail recipient address>	
	<i>string with maximum of 80 characters</i>

<mail return address>	
Video Server	<i>string with maximum of 80 characters</i>
<backup smtp mail server>	
	<i>IP address or domain name</i>
<backup mail recipient address>	
	<i>string with maximum of 80 characters</i>
<local ftp port>	
21	<i>or 1024 to 65535</i>
<ftp server>	
	<i>IP address or domain name</i>
<ftp port>	
21	<i>or 1024 to 65535</i>
<ftp username>	
	<i>string with maximum of 14 characters</i>
<ftp password>	
	<i>string with maximum of 14 characters</i>
<ftp init path>	
	<i>string with maximum of 40 characters</i>
<ftp passive>	
NO	<i>or YES</i>
<backup ftp server>	
	<i>IP address or domain name</i>
<backup ftp port>	
21	<i>or 1024 to 65535</i>
<backup ftp username>	
	<i>string with maximum of 14 characters</i>
<backup ftp password>	
	<i>string with maximum of 14 characters</i>
<backup ftp init path>	
	<i>string with maximum of 40 characters</i>
<backup ftp passive>	
NO	<i>or YES</i>
<http server port>	
80	<i>or 1024 to 65535</i>
<bandwidth limit>	
0	<i>or 64000, 128000, 256000, 512000, 768000, 1000000, 1500000, 2000000</i>
[VIDEO]	
<camera modulation>	
AUTO	<i>or MANUAL. NTSC or PAL will be ignored when set to AUTO</i>
NTSC	<i>or PAL, ignored when set to AUTO but can be notification</i>
<overlay timestamp>	
NO	<i>or YES</i>
<caption text>	
<colored video>	
YES	<i>or NO</i>
<video quality>	

4	<i>1-Medium, 2-Standard, 3-Good, 4-Detailed ,5-Excellent</i>
<default size>	
1	<i>between 5 and -5</i>
<brightness>	
0	<i>between 5 and -5</i>
<contrast>	
0	<i>between 5 and -5</i>
<hue>	
0	<i>between 5 and -5</i>
<saturation>	
0	<i>between 5 and -5</i>
[SERIAL]	
<data bits>	
0	
<stop bits>	
0	
<parity bits>	
0	
<baud rate>	
0	
<ccd model>	
0	
<uart mode>	
RS232	<i>or RS485</i>
<speedlink commands>	
(0)	<i>string of maximum 60 characters</i>
(1)	<i>string of maximum 60 characters</i>
(2)	<i>string of maximum 60 characters</i>
(3)	<i>string of maximum 60 characters</i>
(4)	<i>string of maximum 60characters</i>
<custom ccd commands>	
HOME	
	<i>string with maximum of 60 characters</i>
UP	
	<i>string with maximum of 60 characters</i>
DOWN	
	<i>string with maximum of 60 characters</i>
LEFT	
	<i>string with maximum of 60 characters</i>
RIGHT	
	<i>string with maximum of 60 characters</i>
TELESCOPE	
	<i>string with maximum of 60 characters</i>
WIDE	
	<i>string with maximum of 60 characters</i>
NEAR	
	<i>string with maximum of 60 characters</i>
FAR	

	<i>string with maximum of 60 characters</i>
[ALERT]	
<script file enabled>	
NO	<i>or YES to activate external script</i>
<motion detection channel enabled>	
NO	<i>or YES</i>
<snapshot channel enabled>	
NO	<i>or YES</i>
<series snapshot channel enabled>	
NO	<i>or YES</i>
<application mode>	
0	<i>disabled, 1 for Sequential, 10 for motion detection event, 12 for DI event</i>
<visual alert>	
NO	<i>or YES</i>
<upload method>	
0	<i>FTP, 1 for email</i>
<file with time suffix>	
YES	<i>or NO</i>
<percentage of object size over screen>	
10	<i>1 to 99</i>
<percentage of sensitivity>	
90	<i>1 to 99</i>
<tenth seconds to snapshot after event>	
5	
<snapshots taken after event>	
1	
<time to start snapshot>	
00:00:00	<i>24 hour format</i>
<time to stop snapshot>	
00:00:00	<i>24 hour format</i>
[DEMO]	
<demo enabled>	
NO	<i>or YES</i>
<PTZ enabled>	
NO	<i>or YES</i>
<DO control enabled>	
NO	<i>or YES</i>
<Video is open>	
NO	<i>or YES</i>

System Configuration Via Telnet

Telnet Commands

Video Server has a Telnet daemon that allows administrators to access some seldom used functions. Using any general terminal program to connect to Video Server will prompt the user for a password. The Username is not requested since only administrators can access the Telnet daemon. The password is the same as that used for web access. After logging in, type "help" for the command list. If "debug" or "dinote" is not executed, Telnet will disconnect automatically after being idle for 1 minute.

System core debugging

General activities are recorded into SYSTEM.LOG continuously, but information about abnormal status is not recorded. Administrators can type the "debug" command to examine in-depth core debugging information. This causes Video Server to start dumping the detailed debugging information while the system is running. This is useful for examining if any errors have occurred when the system operates abnormally. The stored information will be cleared automatically after the dump. Video Server will continue to dump new messages unless the connection is broken. If Telnet is not connected, messages will be stored until administrators re-login.

Monitor changed status of digital inputs

Typing "dinote" will make Video Server send the current status of all digital inputs. After that, Video Server will continuously monitor DI status and send messages only when the state has changed. For example, after typing "dinote" the terminal will display

```
DI1=L
```

and after DI1 changes to H, the terminal will display

```
DI1=H
```

Stop information dumping

Typing "stop" will halt the dumping of debug information and the digital input status.

Query status of digital inputs

Typing "diquery" will display the status of all digital inputs once.

Set digital outputs

To set digital output to connect NO with COMMON, type "DO1=L".

To set digital output to connect NC with COMMON, type "DO1=H".

Erase snapshots stored in Flash memory

Typing "erase image" will clear all snapshots saved in Flash memory.

Erase logo and graphic buttons

Typing "erase graph" will clear all images used on the homepage. If no new images are uploaded, the system will switch to text mode and use default images instead.

Skip installation at next boot

Typing “lock” will inform Video Server to lock the current network settings. You won't need to go through the installation procedure the next time the Video Server boots up.

Reset network for new settings

Typing “unlock” will cause Video Server to wait for the installation procedure the next time it boots up.

Restore factory default settings

Typing “clear” will make Video Server restore factory settings but not restart. To validate new settings, type “reset” to make the system restart.

Reset system

Typing “reset” will make Video Server perform a software reset.

Advanced Applications

This chapter will introduce more advanced applications.

The following topics are covered in this chapter:

- ❑ **Capturing Up-to-date Still Images**
 - Getting snapshot via URL
 - Getting snapshot via FTP
- ❑ **Video Embedded in Customers' Homepage**
- ❑ **Download Event-triggered Snapshots**
 - Getting triggered snapshots via URL
 - Getting triggered snapshots via FTP
- ❑ **Customizing Graphics in Homepage**
- ❑ **Command Script for DI/DO & Camera's Actions Setting**
 - Command Format
 - Parameter Explanations
 - Practical Examples
- ❑ **URL Commands for DI/DO & Camera's Actions Setting**
 - Query status of digital inputs
 - Drive digital outputs
 - Moving motorized camera in PTZ direction
 - Recalling camera position
 - Transparent Remote Serial Driver
 - Sending command to device attached to COM port
- ❑ **URL Commands for System Maintenance**
 - Download System Log via FTP
 - Restart System via URL
 - Restore Factory Default Settings via URL

Capturing Up-to-date Still Images

Getting snapshot via URL

Administrators and users can use a specific URL to capture the current still image.

URL
http://<IP of Video Server>/cgi-bin/video.jpg[?<param>=<value>]

Additional Parameters: param	Value	Description
Quality	1	Medium
	2	Standard
	3	Good
	4	Detailed
	5	Excellent
Size	1	Half
	2	Standard
	3	Double

Getting snapshot via FTP

Administrators and users can log in to the Video Server FTP daemon to download the refreshed JPEG image named **video.jpg**. The user name and password are the same as for web access. The zero file size in file directory means it is captured by request.

Video Embedded in Customers' Homepage

In addition to the URL, some scripts should be added to download a plug-in for video images. The following example simply displays title text and a real-time video window in Internet Explorer or Netscape. The user name and password should be configured in advance. Those who are familiar with HTML can easily add more components or rewrite the code to create a more vivid and useful homepage.

```
<html>
<head><title>Video Server Sample Page</title></head>
<body>
<h2>Video Server Sample Page</h2>
<script language="JavaScript">
<!--
if ((navigator.appName == "Microsoft Internet Explorer")&&(navigator.platform != "MacPPC"))
{
    document.write("<OBJECT ID=\"MjpegControl\" WIDTH=352 HEIGHT=240");
    document.write(" CLASSID=\"CLSID:EAA105FE-7BBD-4196-8B96-D46743894195 \"");
    document.write("CODEBASE=\"http:// 192.168.0.201/plugin
/mjpegcontrol.cab#version=2,0,0,6\">");
    document.write("<PARAM NAME=\"VSize\" VALUE=\"2\">");
    document.write("<PARAM NAME=\"Url\" VALUE=\"http://
```

```

192.168.0.201/cgi-bin/video1.jpg");
    document.write("?cam=1&quality=3&size=2\">");
    document.write("</OBJECT>");
} else {
document.write("<img width=352 height=240");
document.write("src=\"http://192.168.0.201/cgi-bin/video.jpg?cam=1&quality=3&size=2\">");
}
//-->
</script>
</body>
</html>

```

Download Event-triggered Snapshots

There are three video image files for the video channel of three stages: pre-alarm, the moment when triggered, and post-alarm. Only the snapshots captured by the last event are preserved. Administrator and users can use FTP or URL to get the saved snapshots. They can also be browsed from the application page under system configuration.

Getting triggered snapshots via URL

/cgi-bin/snapshot.jpg?file=<value>

Snapshot stage \ Video channel	Video
snapshot before event	Pre1
snapshot upon event	Trg2
snapshot after event	Pos3

Getting triggered snapshots via FTP

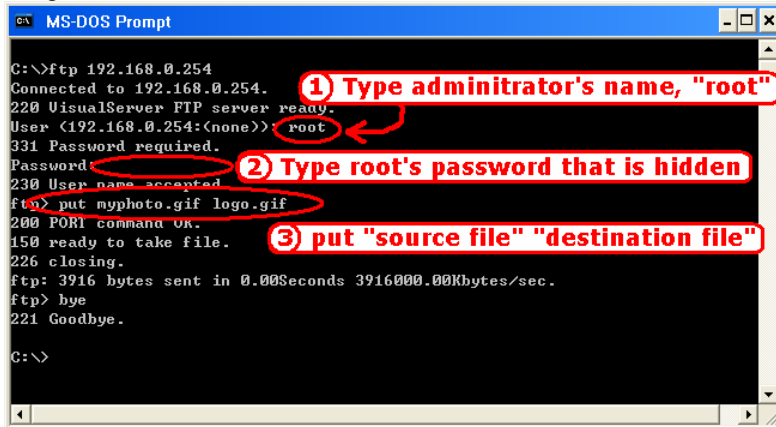
File name	Pre-alarm	Upon alarm	Post-alarm
Video	vpre.jpg	vtrg.jpg	vpos.jpg

Customizing Graphics in Homepage

While in text mode, there is a small icon named BTN_TEXT.GIF preceding each link that can be changed by administrators. While in image mode, the default method will use the image stored in Flash memory. The table below shows the referenced file name and size limitation of each stored image. Administrators may customize preferred image under the size limit and put it to the specific name via FTP. Administrators can download the original images before uploading for backup.

Object	File name	Maximal size
Logo	logo.gif	Logo and background share 8K bytes
Background	back.gif	Logo and background share 8K bytes
Link icon	btn_text.gif	2K bytes
Configuration	btn_conf1.gif	5K bytes

Usage via FTP is illustrated below.



Command Script for DI/DO & Camera's Actions Setting

Besides the application wizard, Video Server provides a more professional command script for advanced applications. The command script will be executed exclusively with the settings in Application page of system configuration except for the weekly schedule. To build an advanced application, follow the steps below.

Step 1: Use any text editor to edit the appropriate command script according to the command format. The script size cannot exceed 500 bytes.

Step 2: Save the script as a file named **SCRIPT.TXT**.

Step 3: Use FTP with administrator's privilege to upload the script file.

Step 4: Enter the Application page in system configuration to define the time period in **Weekly Schedule**. If it is supposed to run any time, keep the original settings but check the option **All the time except for the above schedule**.

Step 5: Check the option **Enable the external script file to exclude the following settings** to activate the command script.

Command format

[Event][“Operator”Event].....=[Action][+Action].....;

Event

[“Digital Input Number””Digital Input State”]
 [“M” “Channel Number...”]
 [“Channel Number””Video Input State”]

Operator

“+”: (OR)
 “*”: (AND)

Action

```
[("Delay Time")("Digital Output Number""Digital Output State")]
["V""Channel Number""P""Preset Location Number"]
["W"{ "IP": "Port" } { "Message" }]
["U""Method"]
["S""Channel Number..."]
  ["N" { "filename" }];
```

Parameter Explanations

Items above in brackets show the options available for that item.

"Digital input number": always 1
 "Digital input state": H (high), L (low), / (low to high), \ (high to low)
 "M": motion detection event.
 "Channel Number": always A
 "Video input state": / (signal from loss to presence), \ (signal from presence to loss), X (as long as signal loss)
 "Delay time": seconds of delay for the following actions after events happen
 "Digital output number": always 1
 "Digital output state": C (NC), O (NO)
 "V": set video channel to go to preset location
 "P": set preset location number to go to preset location
 "W": send warning to server
 "IP": server IP
 "Port": server port
 "Message": text to be sent to the server
 "U": upload snapshots
 "Method": 'F' is by FTP, 'M' is by e-mail
 "S": take snapshot on channels
 "N": define the format of the filename
 ";": end of line
 The filename format is,
 %a image characterization (pre, trg, pos)
 %y year
 %M month
 %d day
 %h hour
 %m minute
 %s second
 %t tenth second

Practical Examples

Command line	Description
MA=1C;	When any motion is detected, "Normal Close" of relay output will short with "Common".
I\=(5)1O;	When DI transients goes from high to low, "Normal Open" of relay output will short with COMMON in 5 seconds.
A=W{192.168.0.1:6000}{no signal!};	If there is no video signal, a message "no signal!" will be sent to port 6000 of 192.168.0.1 once.

IH=V1P15;	When sensor input 2 is high, drive the camera mapped to video 1 to go to preset location 16.
MA=UF+SA+N{ video%a@%y%M%d%h%m%s};	If any motion is detected, upload snapshots. If an event is triggered at 19:05:30 2002/10/15, the snapshot files will be named as, videopre@20021015190530.jpg, videotrg@20021015190530.jpg, videopos@20021015190531.jpg

**ATTENTION**

The script file is limited to a maximum of 500 characters. The actual performance will depend on the complexity of the command script.

URL Commands for DI/DO & Camera's Actions Setting

Query status of digital inputs

/cgi-bin/getdi.cgi

Video Server will return status of four digital inputs in one line.

Drive digital outputs

/cgi-bin/setdo.cgi?do1=<state>

<state>: **C**, **O** denoting Normal Close or Normal Open respectively.

Moving motorized camera in PTZ direction

/cgi-bin/control.cgi?<param>=<value>&<param>=<value>.....

Param	Value	Description
move	up	Tilt up
	down	Tilt down
	left	Pan left
	right	Pan right
	home	Return to home position
zoom	wide	Zoom in
	tele	Zoom out
	auto	Automatic focus
focus	near	Focus near
	far	Focus far
	auto	Automatic focus
panspeed	-5 to 5	
tiltspeed	-5 to 5	

Recalling camera position

`/cgi-bin/recall.cgi? cam=1&recall=<position>`

`<position>`: the text string of a location that is preset in system configuration.

Refer to Camera preset configuration URL for preset function.

Transparent Remote Serial Driver

Video Server provides a highly customized control support for third-party serial interface devices (other than PTZ cameras). This means that in addition to setting up a custom camera with PAN/TILT/ZOOM/FOCUS commands, users may utilize this mode and introduce a customized homepage to transmit arbitrary user-defined commands from user-side to Video Server. The third-party device connected to the serial port of Video Server will receive the same command sent by the originator. The user only needs to attach the command in ASCII format after the special URL. Video Server will parse the commands and translate into binary code to send out.

Sending command to device attached to COM port

`/cgi-bin/senddata.cgi?data=123456,ABCDEF&flush=yes&wait=1000&read=6`

This hyperlink will inform Video Server to send out binary format commands to COM with "0x12, 0x34, 0x56" followed by "0xAB, 0xCD, 0xEF". Each comma separates the commands by 200 milliseconds. "flush=yes" means the receive data buffer of COM port must be cleared before read. Then read 6 bytes after waiting for 1000 milliseconds. The read data can be up to 128 bytes and will return as ASCII coded hexadecimal value, e.g., 0x41, 0x42, 0x43 read from COM port will show in returned homepage as 414243 instead of ABC.

URL Commands for System Maintenance

Download System Log via FTP

Besides viewing the system log from the web page, administrators can download the system log file, SYSTEM.LOG, via FTP. To log into the FTP daemon, enter "root" as the user name and the same administrator's password used in Web access.

Restart System via URL

`/cgi-bin/reset.cgi`

Restart Video Server without warning.

Restore Factory Default Settings via URL

`/cgi-bin/restore.cgi`

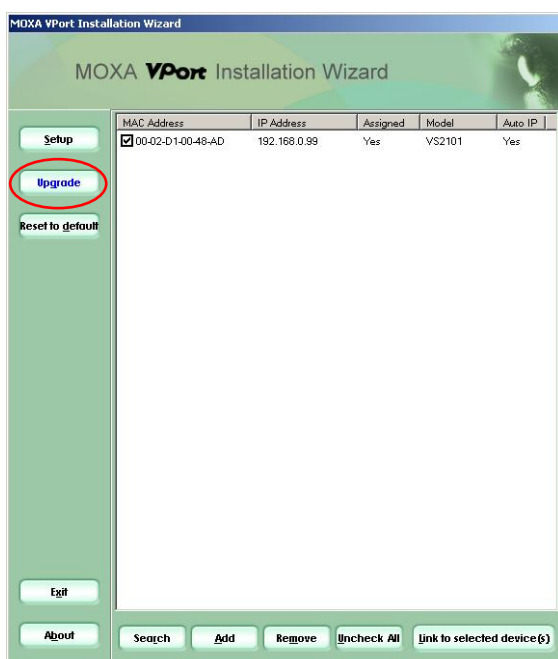
Video Server will automatically restart after restoring factory default configurations.

6

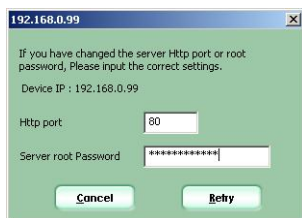
Upgrading System Firmware

Using the VPort Installation Wizard to Upgrade Firmware

1. Open the VPort Installation Wizard, checkmark the box next to the server whose firmware you wish to upgrade, and then click the **Upgrade** button.

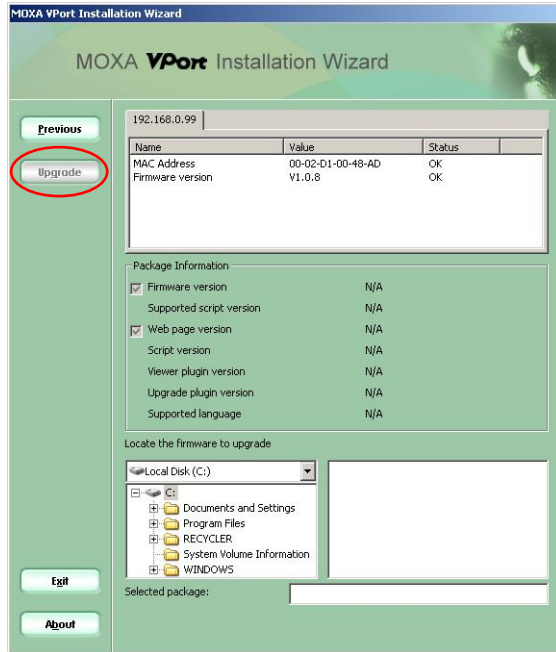


2. Type in the http port number of the video server whose firmware you wish to upgrade, type the administrator password in the space provided, and then click **Retry**.

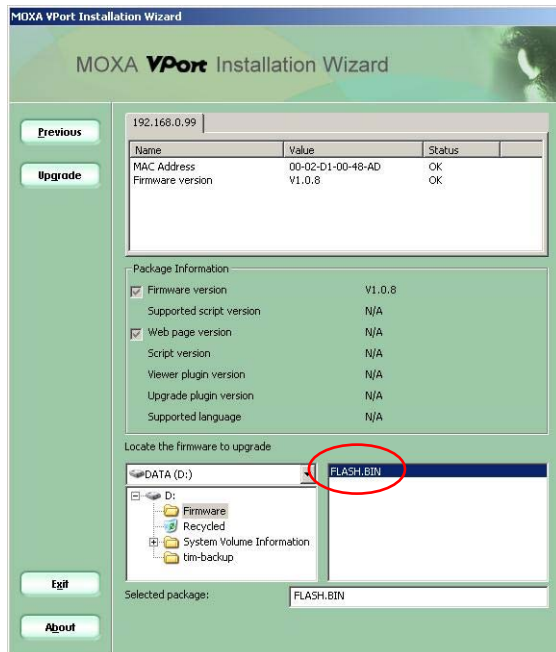


NOTE: If the password is wrong, a message window will appear asking you to check the FTP port and password again

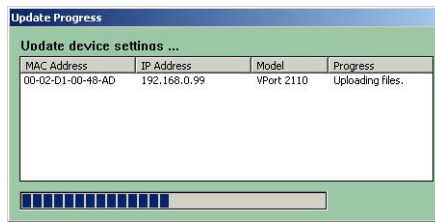
- The program will detect the Video Server. Note that the **Upgrade** button is grayed out. Use the **Locate the firmware to upgrade** navigation tool in the bottom third of the window to locate the firmware file.



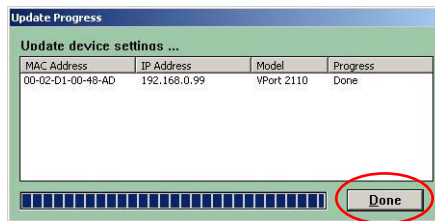
- Click on the firmware file name to select it, and then click on the **Upgrade** button in the upper left corner of the window.



5. Wait a few seconds for the upgrade process to finish.



6. When the upgrade process has finished, click **Done** to close the **Update Progress** window.

**ATTENTION**

Do not turn off the power supply of the VPort 2110 video server while the VPort Installation Wizard is upgrading the firmware. Doing so will cause the firmware upgrade to fail, and you will need to return the video server to Moxa for repair.

7

Troubleshooting

This chapter describes some problems that might occur during installation or operation, and provides the basic solutions to those problems.

The following topics are covered in this chapter:

- ❑ **Power On Self Test (POST)**
- ❑ **Frequently Asked Questions**

Power On Self Test (POST)

After the power has been turned on, Video Server will perform a self-diagnostic to detect any possible hardware defects. The status LEDs will blink during the POST, and will keep blinking until the POST completes successfully, or a fatal error is detected. If either status LED indicator is dim to start off with, the LED may be broken.

When certain fatal errors occur, LED2 and LED3 blink in a particular way to indicate the type of failure, as described in the following table.

LED pattern after POST	Failed function	Troubleshooting
LED2 and LED3 blink at same time	Video input	The video decoder is broken. Ask your reseller for technical service.
LED2 ON and LED3 OFF	Ethernet network	The PCI interface cannot work. Ask your reseller for technical service.
LED2 OFF and LED3 ON	Ethernet network	The Ethernet controller is broken. Ask your reseller for technical service.
LED2 ON and LED3 ON	Ethernet interface	Ethernet interface failure includes not only components on board but also Ethernet cable and the devices on the opposite end.
LED2 blink and LED3 ON	System date and time	The real-time clock is broken. Ask your reseller for technical service.
LED2 ON and LED3 blink	Camera control via COM or modem interface	The UART controller is broken. Ask your reseller for technical service.



ATTENTION

To reduce system failure caused by operation error, always read the related sections in this user's manual to prevent unexpected errors caused by "wild-guess configuration."

Frequently Asked Questions

Q: Why can't I see the Video Server in the installer after rebooting?

A: The installer is only used to install the IP address of the Video Server. If the IP address is fixed by checking the option in the installer, the Video Server will no longer appear in the installer.

Q: Why can't I connect the Video Server after rebooting?

A: If the IP address is not fixed, Video Server will always wait for the installing command to provide a valid IP address. This means that the previous IP address will not be used if the option in the installer is not checked; or the option in the network configuration is not cleared. The benefit of waiting for a valid IP address by default is that administrators can find the Video Server in the installer to prevent IP conflict. As long as the IP address is confirmed, we suggest fixing the IP address to make Video Server automatically start up whenever regaining power.

Q: What if I forget my password?

A: Every access to Video Server needs authentication. If you are not a permitted user, you may view the images or control the camera as long as the demo account is opened. The demo account user may use username as "demo" without any password to access limited features. If you are one of the managed users, you must ask the administrators for the password in the first time. If you are the administrator, there is no way to recover the root password. The only way to regain access to Video Server is to restore the factory settings and reinstall it.

Q: Why can't I watch video from Video Server after it is authenticated?

A: There are many possible scenarios regarding this problem,

1. If you have just installed Video Server and are unable to watch the video, check if the video input is enabled and check the video modulation on the Configuration page.
2. If Video Server is installed correctly and you are accessing Video Server for the first time using Internet Explorer, adjust the security level of Internet Explorer to allow installation of the plug-in.
3. If the problem still exists after making the adjustment, the current number of users may be greater than what the system allows.
4. If you are using a demo account, the administrator may hide the video from public view.

Q: How can I use a name instead of the IP address to connect Video Server?

A: To allow users to connect to Video Server through an easily memorized name, administrators must first configure the network's domain name server. Here is an example: the administrator installs the Video Server with a reserved IP address and assigns it a name on the domain name service, then users can connect to Video Server by typing a name instead of an IP address. If there is DHCP service on the network, the IP address must be excluded on the DHCP service to prevent an IP conflict.

Q: What is the plug-in for?

A: The plug-in provided by Video Server is used to display motion pictures on versions of Internet Explorer that do not support server push technology. If your system does not allow installation of any plug-in software, the security level of the web browser may need to be lowered. It is recommended that you consult the network supervisor in your office regarding adjusting the security level.

Q: Why is the timestamp different from the system time of my PC or notebook?

A: The timestamp is based on the system time of Video Server. It is maintained by an internal real-time clock, and automatically synchronizes with the time server if Video Server is connected to the Internet and the function is enabled. Differences of several hours may result from the time zone setting.

Q: Why does the image not refresh regularly?

A: In a modem environment, it is because the bandwidth of PPP connections is much lower than for Ethernet. If the difference of the timestamp is not stable, use the modem property on the control panel to adjust the UART FIFO to a lower level for both receiving and transmitting. In an Ethernet environment, it may be due to the time taken for storing snapshots into memory when events occur.

Q: How many users are allowed to watch Video Server at the same time?

A: To achieve the best effect, Video Server will allow a maximum of twenty users to connect at the same time. Excess users can get an auto-refreshed still image on homepage instead. It is recommended to build another web server to host a large quantity of users by retrieving images from Video Server periodically.

Q: How fast is the video rate of Video Server?

A: The JPEG codec can process 30 frames per second internally. However, the overall performance is subject to many different factors, such as:

1. network throughput,
2. bandwidth share,
3. number of users,
4. number of video inputs accessed at one time,
5. viewing complicated objects results in a larger image file,
6. the level of your PC or notebook that is responsible for displaying images.

In general, the transfer rate on a general local network environment can achieve over 200 kilobytes per second and approximately 10 to 20 pictures of normal environment per second. The general frame size is illustrated in the following table for your reference.

Quality setting	Size of each frame	Bandwidth demand for 30 fps
Medium	9.3 Kbyte	2246 Kbps
Standard	11.15 Kbyte	2676 Kbps
Good	13.76 Kbyte	3303 Kbps
Detailed	16.35 Kbyte	3925 Kbps
Excellent	20.3 Kbyte	4886 Kbps

Q: How can I keep Video Server as private as possible?

A: Video Server is designed for surveillance purposes and has many flexible interfaces. The user authentication and special confirmation during installation can keep Video Server from unauthorized access. You may also change the HTTP port to a non-public number. You can check system log to examine any abnormal activities and trace the origins.

Q: I have a PTZ camera that is not on the support list. How can I control it?

A: Video Server provides a custom camera command interface to control cameras that are not supported. The details are described in this manual. Be sure that the COM port settings are applied to the camera specifications. The camera control cable included is shown in the package contents. Prepare your own cable if necessary. The general PTZ command is composed of one start command and one stop command. When editing both commands in the edit box of the configuration page, use comma(s) to separate commands. Each comma represents 200 milliseconds. If the user has some serial control device other than the PTZ camera, the special URL is provided to send the desired commands. For quick access, integrate the URL to another homepage on your own web server.

Q: Why can I see image files when I use dir in FTP even if the alarm is not triggered?

A: Every time Video Server starts, it will capture the images as vpre.jpg. If there are previously saved image files that are not retrieved, Video Server will keep them until they are accessed.

Q: How will the stored images be processed if Video Server loses power?

A: If a user has defined the snapshot interval, Video Server will capture images periodically as pre-alarm stage. Once the pre-defined condition is match, the pre-alarm images will be kept and the current images will be saved. The subsequent images will be stored as post-alarm stage. Users may retrieve these files either by downloading via FTP, or direct Video Server to send them in e-mails. This means that after monitoring conditions are met, Video Server will keep these image files until user retrieval even if power is lost.

Q: If I set Video Server to send e-mails of images whenever the conditions are met, will my e-mail account overflow?

A: It is recommended to use transient state instead of steady state. For instance, use 'Input is Rising' and 'Input is Falling' rather than 'Input is High' and 'Input is Low' to let the condition be triggered only when state is changed.

Q: The image is not clear enough. Is anything broken?

A: The lens can be focused by rotating the outer ring. Rotate it clockwise or counter-clockwise to focus near or far.

A

URL Commands of Video Server

Video Server can be easily integrated with existing websites or web control applications using convenient URLs. This section lists the commands in URL format corresponding to the basic functions of Video Server. Some RFC standards related to HTML may be a good reference for implementation of the customized homepage.

Page URL

The configuration page has a frame layout that includes an option list frame and an option page frame. Except for the configuration page, the Reference URLs shown below link just to the option page frame. Some pages, such as image quality settings and preset settings, open in a new browser window. These URLs can be accessed only by administrators.

Homepage name	Reference URL	Comment
configuration page	/setup/config.html	
system option	/setup/system.html	
security option	/setup/security.html	
network option	/setup/network.html	
video option	/setup/video.html	
image quality option	/setup/imagesetting.html?cam=<channel number>	<Channel number>: 1,2,3,4
camera control	/setup/pframe.html?cam=<channel number>	<Channel number>: 1,2,3,4
preset PTZ camera	/setup/pframe.html?cam==<channel number>	<Channel number>: 1,2,3,4
custom command setting	/setup/custom.html?com=<COM number>	<COM number>: 1,2
custom camera setting	/setup/custom.html?com=<COM number>	<COM number>: 1,2 and PTZ driver must choose" Custom Camera
application option	/setup/app.html	
motion detection setting	/setup/motion.html?com=<channel number>	<Channel number>: 1,2,3,4
view snapshots	/setup/snap.html?pic=<snapshot stage>< channel number >	/setup/snap.html?pic=<snapshot stage>< channel number >

demo option	/setup/demo.html	
homepage layout option	/setup/layout.html	
system log	/setup/logfile.html	
system parameters	/setup/parafile.html	
set factory default	/setup/factory.html	

System Resource URL

Some images are used on the homepage when the homepage layout is in image mode. Administrators may use the following links to show the images saved on Video Server on another page. To change the logo or the background images referenced by the URL, refer to the homepage layout section under configuration.

Resource name	Reference URL
system logo image	/logo.gif
background image	/back.gif
button image for configuration	/btn_conf.gif
icon image for link indicator	/btn_text.gif

General Format of Command URL

```
<general format>
URL[?[name=value][&name=value].....]
<method>
POST
<authorized user>
root
```

System Configuration URL

URL: /cgi-bin/system.cgi

Name	Value	Description
host	<text string shorter than 15 characters>	system name
method	keep	keep date and time unchanged
	auto	use NTP server to synchronize
	manu	directly adjust date and time
date	<yy/mm/dd>	year, month and date separated by slash
time	<hh:mm:ss>	hour, minute and second separated by colon
ntp	<domain name or IP address>	NTP server
zone	GMT±<n>:00	time zone, n ranged from 0 to 12

Security Configuration URL

URL: /cgi-bin/system.cgi

Name	Value	Description
rootpass	<text string shorter than 15 characters>	change root password
username	<text string shorter than 15 characters>	add new user
userpass	<text string shorter than 15 characters>	new user's password
ioallowed	<not required>	allow user to control DO
ptzallowed	<not required>	allow user to view PTZ panel
deluser	<text string shorter than 15 characters>	Existing user name
slow	<not required>	Snapshot mode
open	<not required>	enable demo account
camctrl	<not required>	allow demo user to control the PTZ camera
demoioallowed	<not required>	allow demo user to control the I/O access
slow	<not required>	snapshot mode
delay	<integer>	refresh time in snapshot mode

Network Configuration URL

URL: /cgi-bin/network.cgi

Name	Value	Description
reset	yes	enable installation at next boot
	<other than yes>	disable installation at next boot
ip	<IP address>	Video Server's IP address
subnet	<IP address>	subnet mask
router	<IP address>	default gateway
domain	<text string shorter than 40 characters>	domain name of Video Server
dns1	<IP address>	primary DNS server
dns2	<IP address>	secondary DNS server
limit	Not limited	use full network bandwidth
	64Kbits/second	use only 64Kbps of bandwidth
	128Kbits/second	use only 128Kbps of bandwidth
	256Kbits/second	use only 256Kbps of bandwidth
	512Kbits/second	use only 512Kbps of bandwidth
	768Kbits/second	use only 768Kbps of bandwidth
	1Mbits/second	use only 1Mbps of bandwidth
	1.5Mbits/second	use only 1.5Mbps of bandwidth

	2Mbits/second	use only 2Mbps of bandwidth
http	<number less than 65535>	HTTP port
smtp1	<domain name or IP address>	primary SMTP server
mailto1	<text string shorter than 80 characters>	mail recipient address
smtp2	<domain name or IP address>	secondary SMTP server
mailto2	<text string shorter than 80 characters>	mail recipient address
returnmail	<text string shorter than 80 characters>	return address
ftp1	<domain name or IP address>	primary FTP server
ftprp1	<number less than 65535>	FTP server port
ftpuser1	<text string shorter than 15 characters>	user name for primary FTP server
ftppass1	<text string shorter than 15 characters>	password for primary FTP server
ftpfolder1	<text string shorter than 40 characters>	upload folder in primary FTP server
ftp2	<domain name or IP address>	secondary FTP server
ftprp2	<number less than 65535>	secondary FTP server port
ftpuser2	<text string shorter than 15 characters>	user name for secondary FTP server
ftppass2	<text string shorter than 15 characters>	password for secondary FTP server
ftpfolder2	<text string shorter than 40 characters>	upload folder in secondary FTP server

Video Configuration URL

URL: /cgi-bin/video.cgi

Name	Value	Description
time	<not required>	enclose timestamp
text	<text string shorter than 15 characters>	enclose caption
color	B/W	set encoder to monochrome
	<other than B/W>	set encoder to color
size	Half	set size to half
	Standard	set size to standard
	Double	set size to double
	Half x 2	set size to half x 2
	Standard x 2	set size to standard x 2
quality	Medium	lowest resolution
	Standard	lower resolution
	Good	normal setting

	Detailed	higher resolution
	Excellent	highest resolution
mode	Auto	let Video Server detect video modulation
	NTSC	set directly to NTSC type
	PAL	set directly to PAL type

Image Quality Configuration URL

URL: /cgi-bin/image.cgi

Name	Value	Description
brightness	<-5 ~ 5>	adjust brightness of image
contrast	<-5 ~ 5>	adjust contrast of image
hue	<-5 ~ 5>	adjust hue of image
saturation	<-5 ~ 5>	adjust saturation of image
preview	<not required>	not save the parameters
restore	<not required>	recall the original settings
save	<not required>	save the parameters

Motion Detection Configuration URL

URL: /cgi-bin/motion.cgi

Name	Value	Description
per	<integer>	object size percentage
sen	<integer>	sensitivity percentage

COM Configuration URL

URL: /cgi-bin/serial1.cgi

Name	Value	Description
interface	RS232	switch COM to RS232
	RS485	switch COM to RS485
detect	generic	accept generic CGI commands
	modem	use modem
	none	no drivers
driver	Sony VISCA	
	Canon VCC1	
	Canon VCC3	
	Canon VCC4	
	DynaDome/SmartDOME	
	Pelco D protocol	

	Lilin PIH-7x00	
	Ernitec	
	Custom Camera	third party PTZ camera

Custom Camera Configuration URL

URL: /cgi-bin/serialportsettings.cgi

Name	Value	Description
baud1	<integer>	set baud rate of COM
data1	<integer>	set data bits of COM
stop1	1	set 1 stop bit of COM
	2 <other than 1>	set 2 stop bits of COM
parity1	None	set parity check of COM to none
	Odd	set parity check of COM to odd
	Even	set parity check of COM to even

Camera Custom Command Configuration URL

URL: /cgi-bin/cuscom.cgi

Name	Value	Description
up1	<text string shorter than 60 characters>	tilt up command string of COM
down1	<text string shorter than 60 characters>	tilt down command string of COM
left1	<text string shorter than 60 characters>	pan left command string of COM
right1	<text string shorter than 60 characters>	pan right command string of COM
home1	<text string shorter than 60 characters>	home command string of COM
tele1	<text string shorter than 60 characters>	zoom in command string of COM
wide1	<text string shorter than 60 characters>	zoom out command string of COM
str11	<text string shorter than 8 characters>	button name of custom command 1 of COM
str12	<text string shorter than 8 characters>	button name of custom command 2 of COM
str13	<text string shorter than 8 characters>	button name of custom command 3 of COM
str14	<text string shorter than 8 characters>	button name of custom command 4 of COM
str15	<text string shorter than 8 characters>	button name of custom command 5 of COM
com11	<text string shorter than 60 characters>	custom command 1 of COM

com12	<text string shorter than 60 characters>	custom command 2 of COM
com13	<text string shorter than 60 characters>	custom command 3 of COM
com14	<text string shorter than 60 characters>	custom command 4 of COM
com15	<text string shorter than 60 characters>	custom command 5 of COM

Camera Preset Configuration URL

URL: /cgi-bin/camerasetting.cgi

Name	Value	Description
addpos	<text string shorter than 18 characters>	add preset position
delpos	<existing position name>	delete preset position

Modem Configuration

URL: /cgi-bin/serialmodem.cgi

Name	Value	Description
dialout	yes	allow Video Server dialing out on event
	no	no dial-out allowed
method	Tone (ATDT)	make modem dial in tone
	Pulse (ATDP)	make modem dial in pulse
reatt	<integer>	redial attempts
discon	<integer>	minutes delay before disconnection
init	<text string shorter than 40 characters>	command to initialize modem
phone1	<text string shorter than 40 characters>	phone number of primary ISP
user1	<text string shorter than 40 characters>	user name for primary ISP
pass1	<text string shorter than 40 characters>	password for primary ISP
phone2	<text string shorter than 40 characters>	phone number of secondary ISP
user2	<text string shorter than 40 characters>	user name for secondary ISP
pass2	<text string shorter than 40 characters>	password for secondary ISP

Application Configuration URL

URL: /cgi-bin/app.cgi

Name	Value	Description
sun	<not required>	set Sunday in weekly schedule
mon	<not required>	set Monday in weekly schedule
tue	<not required>	set Tuesday in weekly schedule
wed	<not required>	set Wednesday in weekly schedule

thu	<not required>	set Thursday in weekly schedule
fri	<not required>	set Friday in weekly schedule
sat	<not required>	set Saturday in weekly schedule
sbegin	<hh:mm:ss>	time to start in weekly schedule
send	<hh:mm:ss>	time to stop in weekly schedule
inv	<not required>	set inverse mode in weekly schedule
enfile	<not required>	enable script file
emode	<not required>	event operation
showalert	<not required>	show alert in image
mdmode	<not required>	Enable motion detection
dihigh	<not required>	Enable DI is high
dilow	<not required>	Enable DI is low
dirise	<not required>	Enable DI is rising
difall	<not required>	Enable DI is falling
delay	<integer>	delay time of DO after event
ioalarm	<not required>	trigger DO when DI condition matched
mdalarm	<not required>	trigger DO when motion detected
ioupload	<not required>	upload snapshot when DI condition matched
mdupload	<not required>	upload snapshot when motion detected
resetdo	<not required>	Clear the DO status
smode	<not required>	sequential mode application
sinter	<integer>	tenth seconds interval for sequential mode
smethod	mail	upload snapshots by email
	ftp	upload snapshots by FTP
suffix	<not required>	FTP file with date and time suffix

Homepage Layout Configuration URL

URL: /cgi-bin/layout.cgi

Name	Value	Description
cuslogo	blank	hide logo
	def	use default logo
	url	use image from URL
logourl	<text string shorter than 80 characters>	URL of image for logo
linkurl	<text string shorter than 80 characters>	URL to link when clicking on logo
cusback	blank	hide background image
	def	use default background
	url	use image from URL
backurl	<text string shorter than 80 characters>	URL of image for background
fcolor	<0 ~ 15>	color index for font
bcolor	<0 ~ 15>	color index for background
dismode	image	display homepage in image mode
	text	display homepage in text mode

B

Settings of Supported PTZ Cameras

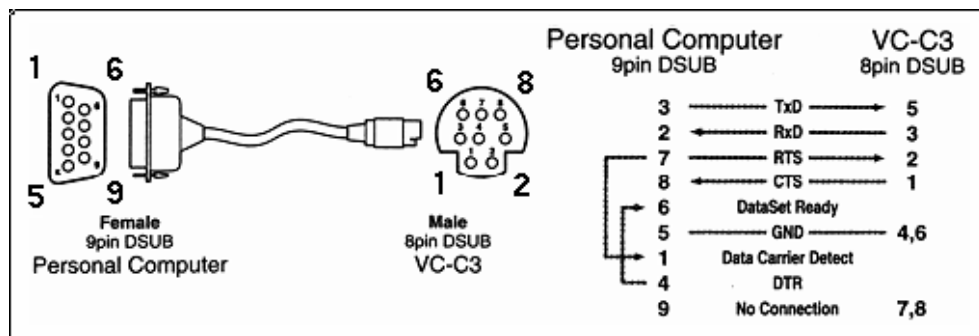
Since the COM port settings can be adjusted to other than the default settings, check the correct default settings for the attached camera.

Camera model	Baud rate	Data bits	Stop bit	Parity bit
Sony VISCA	9600	8	1	None
Canon VC-C1	9600	8	2	None
Canon VC-C3	9600	8	2	None
Canon VC-C4	9600	8	1	None
Pelco D protocol	2400	8	1	None
DynaDome/SmartDome	9600	8	1	None
Ernitec	9600	8	1	None
Lilin	9600	8	1	None

C

Camera Control Cable

The included cable can be used to control motorized cameras of desktop types from Sony and Canon. The pin assignment is illustrated in the following chart. To control cameras of another brand, check the user's manual of the motorized camera to see if the pin assignment of the control cable is appropriate.



D

Time Zone Table

The hour offsets for different time zones are shown below. You will need this information when setting the time zone in automatic date/time synchronization. GMT stands for Greenwich Mean Time, which is the global time that all time zones are measured from.

(GMT-12:00)	International Date Line West
(GMT-11:00)	Midway Island, Samoa
(GMT-10:00)	Hawaii
(GMT-09:00)	Alaska
(GMT-08:00)	Pacific Time (US & Canada), Tijuana
(GMT-07:00)	Arizona
(GMT-07:00)	Chihuahua, La Paz, Mazatlan
(GMT-07:00)	Mountain Time (US & Canada)
(GMT-06:00)	Central America
(GMT-06:00)	Central Time (US & Canada)
(GMT-06:00)	Guadalajara, Mexico City, Monterrey
(GMT-06:00)	Saskatchewan
(GMT-05:00)	Bogota, Lima, Quito
(GMT-05:00)	Eastern Time (US & Canada)
(GMT-05:00)	Indiana (East)
(GMT-04:00)	Atlantic Time (Canada)
(GMT-04:00)	Caracas, La Paz
(GMT-04:00)	Santiago
(GMT-03:30)	Newfoundland
(GMT-03:00)	Brasilia
(GMT-03:00)	Buenos Aires, Georgetown
(GMT-03:00)	Greenland
(GMT-02:00)	Mid-Atlantic
(GMT-01:00)	Azores
(GMT-01:00)	Cape Verde Is.
(GMT)	Casablanca, Monrovia
(GMT)	Greenwich Mean Time: Dublin, Edinburgh, Lisbon, London
(GMT+01:00)	Amsterdam, Berlin, Bern, Stockholm, Vienna
(GMT+01:00)	Belgrade, Bratislava, Budapest, Ljubljana, Prague
(GMT+01:00)	Brussels, Copenhagen, Madrid, Paris
(GMT+01:00)	Sarajevo, Skopje, Warsaw, Zagreb
(GMT+01:00)	West Central Africa
(GMT+02:00)	Athens, Istanbul, Minsk
(GMT+02:00)	Bucharest
(GMT+02:00)	Cairo

(GMT+02:00) Harare, Pretoria
(GMT+02:00) Helsinki, Kyiv, Riga, Sofia, Tallinn, Vilnius
(GMT+02:00) Jerusalem
(GMT+03:00) Baghdad
(GMT+03:00) Kuwait, Riyadh
(GMT+03:00) Moscow, St. Petersburg, Volgograd
(GMT+03:00) Nairobi
(GMT+03:30) Tehran
(GMT+04:00) Abu Dhabi, Muscat
(GMT+04:00) Baku, Tbilisi, Yerevan
(GMT+04:30) Kabul
(GMT+05:00) Ekaterinburg
(GMT+05:00) Islamabad, Karachi, Tashkent
(GMT+05:30) Chennai, Kolkata, Mumbai, New Delhi
(GMT+05:45) Kathmandu
(GMT+06:00) Almaty, Novosibirsk
(GMT+06:00) Astana, Dhaka
(GMT+06:00) Sri Jayawardenepura
(GMT+06:30) Rangoon
(GMT+07:00) Bangkok, Hanoi, Jakarta
(GMT+07:00) Krasnoyarsk
(GMT+08:00) Beijing, Chongqing, Hongkong, Urumqi
(GMT+08:00) Taipei
(GMT+08:00) Irkutsk, Ulaan Bataar
(GMT+08:00) Kuala Lumpur, Singapore
(GMT+08:00) Perth
(GMT+09:00) Osaka, Sapporo, Tokyo
(GMT+09:00) Seoul
(GMT+09:00) Yakutsk
(GMT+09:30) Adelaide
(GMT+09:30) Darwin
(GMT+10:00) Brisbane
(GMT+10:00) Canberra, Melbourne, Sydney
(GMT+10:00) Guam, Port Moresby
(GMT+10:00) Hobart
(GMT+10:00) Vladivostok
(GMT+11:00) Magadan, Solomon Is., New Caledonia
(GMT+12:00) Auckland, Wellington
(GMT+12:00) Fiji, Kamchatka, Marshall Is..
(GMT+13:00) Nuku'alofa



Technical Specifications

<p>System CPU: Trimedia PNX1300 RAM: 16MB SDRAM ROM: 2MB FLASH ROM</p> <p>Networking Adjustable bandwidth limit</p> <p>Protocols TCP/IP, HTTP, SMTP, FTP, Telnet, NTP, DNS and DHCP</p> <p>Modem PPP (dial-up, direct cable connection)</p> <p>Ethernet 10BaseT Ethernet or 100BaseT Fast Ethernet</p> <p>Video Algorithms Supported JPEG, MJPEG</p> <p>Video Inputs and Outputs 1 video input NTSC/PAL auto-sensing</p> <p>Features Adjustable image size and quality B/W or color control Timestamp and text overlay</p> <p>Resolution NTSC Up to 30 frames at 176x112 Up to 30 frames at 352x240 Up to 9 frames at 704x480 PAL Up to 25 frames at 176x144 Up to 25 frames at 352x288 Up to 8 frames at 704x576</p> <p>Serial Port DB9 RS-232 or RS-485 Terminal block (PTZ camera control) max.115.2Kbps</p>	<p>LED Indicators NETWORK: network link CONNECT: system active SERIAL: serial active</p> <p>Dimensions 72.25 x 106 x 50 mm (W x D x H)</p> <p>Weight Net. 410g</p> <p>Power Consumption: near 4.2W Input: 100-240VAC, 50/60Hz, 0.4A Output: 12VDC, 1.5A (12 VDC, 1.25A for UK plug)</p> <p>Operating Environment Operating Temperature: 0 to 65°C/ 32 to 149°F Storage Temperature: -40 to 70°C/ -14 to 158°F Humidity: 95%RH</p> <p>Alarm Features Motion detection with percentage and sensitivity Daily repeat timing schedule 3 color images per camera for pre/post alarm Automatic transfer of stored images via email or FTP with event-triggered actions</p> <p>PAN/TILT/ZOOM Multiple PTZ camera control through RS-232 or RS-485 Supported devices and protocols: Sony VISCA protocol, Canon VC-C1, VC-C3, VC-C4, Dynacolor SmartDOME, Pelco D-protocol, Lilin Speeddome, Ernitec Speeddome CGI command serial driver is supported</p> <p>Software Development Kit Open ActiveX control</p>
--	---

General I/O 1 Digital input (max. 12VDC 50 mA) 1 Relay output (max. 24 VDC 1A, 125 VAC 0.5A)	Viewing System Requirement Internet Explorer 4.x or above, Netscape Navigator 4.x or above
--	---

F

Service Information

This appendix shows you how to contact Moxa for information about this and other products, and how to report problems.

In this appendix, we cover the following topics.

- ❑ **MOXA Internet Services**
- ❑ **Problem Report Form**
- ❑ **Product Return Procedure**

MOXA Internet Services

Customer satisfaction is our number one concern, and to ensure that customers receive the full benefit of our products, Moxa Internet Services has been set up to provide technical support, driver updates, product information, and user's manual updates.

The following services are provided

E-mail for technical support.....support@moxanet.com

World Wide Web (WWW) Site for product information:

.....<http://www.moxa.com>

Problem Report Form

MOXA VPort 2110

Customer name:	
Company:	
Tel:	Fax:
Email:	Date:

1. **Moxa Product:** VPort 2110
2. **Serial Number:** _____

Problem Description: Please describe the symptoms of the problem as clearly as possible, including any error messages you see. A clearly written description of the problem will allow us to reproduce the symptoms, and expedite the repair of your product.

Product Return Procedure

For product repair, exchange, or refund, the customer must:

- ◆ Provide evidence of original purchase.
- ◆ Obtain a Product Return Agreement (PRA) from the sales representative or dealer.
- ◆ Fill out the Problem Report Form (PRF). Include as much detail as possible for a shorter product repair time.
- ◆ Carefully pack the product in an anti-static package, and send it, pre-paid, to the dealer. The PRA should be visible on the outside of the package, and include a description of the problem, along with the return address and telephone number of a technical contact.