

Moxa Industrial Video Encoder VPort 354 Series Quick Installation Guide

Third Edition, November 2011



© 2011 Moxa Inc. All rights reserved.

P/N: 1802003540012

Overview

The VPort 354 is a high performance, 4-channel industrial video encoder that provides up to 4 CIF full frame rate performance (NTSC: 704 x 480 @ 30 FPS and PAL: 704 x 576 @ 25 FPS) for each channel, and supports a dual MJPEG/MPEG4 algorithm, making it especially well-suited for use with distributed surveillance systems in critical industrial applications. In addition, a continuous pre/post event trigger video record function will help system administrators determine why an alarm was triggered.

Two-way audio is provided for the convenience of real-time communication between system administrators located at the central site, and engineers in the field.

Package Checklist

The VPort 354 is shipped with the following items:

- VPort 354
- 10-pin terminal block for 1 power input and 4 digital inputs
- 8-pin terminal block for the other power input, and 2 relay outputs
- 5-pin terminal block for the RS-232/422/RS-485 PTZ control port
- Quick Installation Guide
- Document & Software CD (includes User's Manual, Quick Installation Guide, Moxa IVN Solution Datasheet and Utility).
- Warranty Card

Note: If any of these items are missing or damaged, please contact your customer service representative for assistance.

NOTE Check the model name on the VPort's side label to determine if the model name is correct for your order.

NOTE This product must be installed in compliance with your local laws and regulations.

Features

High Performance Audio-Video Networking Solution

- Works with NTSC/PAL analog video cameras.
- Supports MPEG4/MJPEG video compression technologies.
- 4 BNC video inputs.
- Video stream up to 120 frames/sec in 4CIF (704 x 480) resolution through a total of 4 channels.
- Selection from 4CIF, 2CIF, CIF, and QCIF resolutions.
- 1 audio input and 1 audio output for 2-way voice communication.
- TCP, UDP, and HTTP network transmission modes.
- Supports Modbus/TCP for easy communication with SCADA systems.
- Standard RTSP (Real-time streaming protocol) for easy integration.
- Supports multicast (IGMP) protocols for efficient network transmission.
- Supports QoS (TOS) for priority transmission.
- Supports SNMP V1/V2c/V3 for network management.
- Built-in web server and RS-232 console for remote access and configuration.

- Supports one SD card slot (SDHC interface) for recording video on the SD card if the network is down.
- Two auto-sensing 10/100BaseT(X) Ethernet port or 100BaseFX (SC connector) for cascade link or port redundancy.
- Allows a maximum of 8 unicast and 4 multicast output video streams at the same time.
- Set up video quality in CBR (constant bit rate) or VBR (variable bit rate).
- Supports 1 RS-232/422/485 DB9 COM port for controlling a PTZ (PAN/TILT/ZOOM) motorized camera or serial device via TCP/IP network.
- Supports 1 RS-232/RS-422/RS-485 5-pin PTZ port for controlling a PTZ (PAN/TILT/ZOOM) motorized camera via TCP/IP network.
- UPnP and IP filtering supported.

Industrial Rugged Design

- Two 12/24 VDC and 24 VAC redundant power inputs with LED indicators
- -30 to 70°C operating temperature for critical industrial environment ("T" model)
- 35 mm DIN-Rail mounting or panel mounting installation (with optional accessory)
- IP30 form factor protection
- CE, FCC approvals for industrial applications

Intelligent Alarm Trigger Capability

- Built-in Video Motion Detection (VMD).
- Equipped with 4 DIs and 2 relays (DO) for external sensors and alarms.
- Pre, trigger, and post alarm snapshot images provided.
- Supports sequential snapshot images.
- Messages with snapshot images can be sent via FTP and email.
- Capable of setting an alarm schedule.

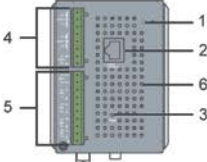
Video Management and Control

- Moxa SoftNVR-IA IP Surveillance Software for viewing and recording.
- Free Moxa VPort SDK Plus supported with flexible interface and sample code for customized application or system integration.

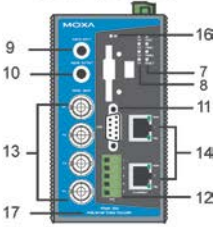
NOTE If you are interested in Moxa VPort SDK PLUS, please go to Moxa's website (www.moxa.com) to download the software, or contact a Moxa sales representative for more information.

VPort 354 Panel Layout

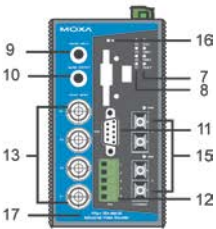
Top Panel View



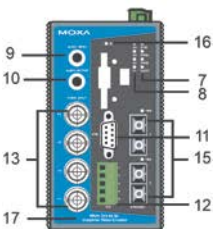
VPort 354 Front Panel View



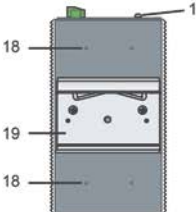
VPort 354-MM-SC Front Panel View



VPort 354-SS-SC Front Panel View



Rear Panel View



1. Grounding screw
2. RS-232 console port
3. Hardware reset button
4. 8-pin terminal block for Relay 1, Relay 2, and power input 2 (PWR2)
5. 10-pin terminal block for DI 1, DI 2, DI 3, DI 4, power input 1 (PWR1)
6. Heat dissipation orifices
7. LEDs for STAT, PWR1, PWR2, FAULT
8. LEDs for V1, V2, V3, V4
9. AUDIO INPUT port for mic-in and line-in connection
10. AUDIO OUTPUT port for external speaker
11. RS-232/422/485 COM port with DB9 male connector for PTZ camera or serial device control
12. RS-232/422/485 PTZ port with 5-pin terminal block for PTZ camera control
13. 4 BNC connectors for video input
14. 2 RJ45 10/100BaseTX Ethernet port with 10 Mbps, 100 Mbps LEDs
15. 2 100BaseFX fiber optic port with 100 Mbps LED
16. SD card slot with LED
17. Model name
18. Screw hole for wall mounting kit
19. DIN-Rail mounting kit

First-Time Installation and Configuration

Before installing the VPort 354, check to make sure that all items in the package checklist are in the box. In addition, you will need access to a notebook computer or PC equipped with an Ethernet port.



ATTENTION

The VPort 354 series are high-performance video encoders designed to perform without a cooling fan. Therefore, it is recommended that each VPort 354 be installed with at least a 5mm clearance on all surfaces to conduce heat-dissipation.

Step 1: Select the Power Source.

The VPort 354 can be powered by a DC power input from 12 to 32 VDC, or an AC power input from 18 to 30 VAC. Two power inputs are provided for redundancy. Users can check the LED status located in the front panel to see if the power inputs are connected appropriately. If one of the power inputs fails, the FAULT LED will light up in red if the power failure alarm is enabled.

NOTE The VPort 354 series support power input specifications of 12-32 VDC for 12/24 VDC power input, or 18-30 VAC for 24 VAC power input (note that this is different from Moxa EDS switch's 12-45 VDC power input).

Step 2: Connect the VPort 354 to a Network.

The VPort 354 has 2 auto-sensing 10/100 Mbps RJ45 Ethernet port, or 100 Mbps fiber optic port (multi mode or single mode) for network connectivity. Both the RJ45 port and fiber optic port have separate LEDs for 10 Mbps and 100 Mbps connections.

Step 3: Connect the VPort 354 to cameras and an audio source.

The VPort 354 has 4 VIDEO INPUT ports (V1, V2, V3, V4). Use the BNC connector (1.0 Vpp, 75Ω) and coaxial cable to connect video cameras to the VPort to input analog video signals.

The VPort 354 has 1 audio input and 1 audio output. A microphone or an amplifier can be plugged directly into the AUDIO INPUT port, and a speaker can be plugged into the AUDIO OUTPUT port.

NOTE Four LEDs (V1, V2, V3, and V4) are located on the VPort 354's front panel to indicate the video signal transmission status for video inputs. Check the LED status to see if the video is working properly.



ATTENTION

A ground loop isolator is recommended to be used between the camera and the VPort to avoid a sudden current, which is generated by the electric potential difference between these two device's ground power, to burn out the VPort's chips and boards.

Step 4: Connecting motorized PTZ cameras and serial devices.

The VPort 354 has 2 RS-232/422/485 ports. One is a COM PORT with DB9 male connector, and the other is a PTZ PORT with 5-pin terminal block connector. Both ports can be used for connecting PTZ control cables for controlling PTZ cameras over the TCP/IP network.

In addition, the COM PORT with DB9 male connector can also be used to connect general serial devices, such as card readers, for transmitting serial data over a TCP/IP network. This port can be used to connect serial devices to the VPort 354 (however, the port cannot be used to connect video cameras).

To enable PTZ control, users should configure the PTZ control protocol in the web-based manager.

NOTE The PTZ control protocol is not standardized. To use a particular PTZ control protocol, the video server must support the driver for that protocol. Currently, the VPort 354 supports PTZ control protocol drivers for:

1. Pelco D
2. Pelco P
3. DynaColor DynaDome
4. Cohu

If you need to use a protocol that is not on the list, contact the manufacturer of the camera to get the PTZ control commands, and then program its PTZ control using the VPort 354's **Custom Camera** function.

NOTE The VPort 354 comes with a PTZ driver upload function for implementing new PTZ drivers. Please contact a Moxa sales representative if you need assistance from Moxa's R&D department to create a new PTZ driver.

NOTE The "Transparent PTZ Control" function in the camera driver list is used to transmit the PTZ control signal over a TCP/IP network to the VPort D351 video decoder or PC (additional driver required). The PTZ control panel or keyboard can directly control the PTZ camera or device, eliminating the need for a PTZ camera driver and allowing the use of PTZ cameras with the VPort encoder.

Step 5: Configure the VPort 354's IP address.


After powering on the VPort 354, wait a few seconds for the POST (Power On Self Test) to run. The STAT LED turns green to indicate that the POST process has completed. The IP address will be assigned when the 10 or 100 Mbps NETWORK LED blinks. The IP address assigned after the POST is completed depends on the network environment.

Network Environment with DHCP Server

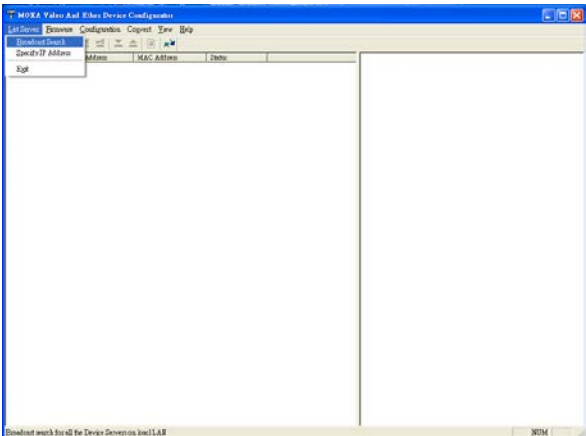
In this case, the IP address of the VPort 354 is assigned by a DHCP Server. Use the DHCP Server's IP address table, or use the Moxa VPort utility to determine the IP address that was assigned by the DHCP Server.

NOTE After powering on the VPort 354, wait a few seconds for the POST (Power On Self Test) to run. The IP address will be assigned when the 10 or 100 Mbps NETWORK LED blinks.

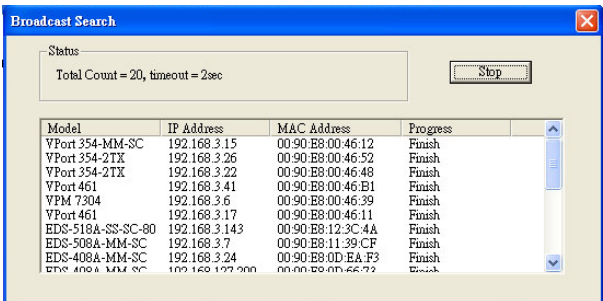
Using the Moxa Ethernet Switch And Video Server Configurator Utility (edscfgui.exe)

1. Run the **edscfgui.exe** program to search for the VPort and EDS switches. After the Utility window opens, select or click on Broadcast Search, which is located under the List Server menu, to initiate a search (note that you can also click on Broadcast Search  icon to initiate a search).

NOTE You may download the VPort and EtherDevice Configurator software from Moxa's website at www.moxa.com.



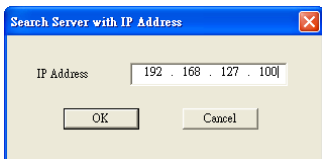
2. The Broadcast Search window will show a list of all switches and VPorts located on the network. The progress of the search will also be indicated.



- When the search has ended, the Model Name, MAC address, and IP address of the EDS switches and VPorts will be listed in the Utility window.

Model	IP Address	MAC Address	Status	Name	Location
VPort 354-MM-2C	192.168.3.15	00:90:89:00:46:12		VPort 354-MM	
VPort 354-2TX	192.168.3.22	00:90:89:00:46:48		VPort 354-2TX	
VPort 461	192.168.3.41	00:90:89:00:46:85		VPort 461	
VFM 7304	192.168.3.6	00:90:89:00:46:39		VFM 7304	
VPort 461	192.168.3.17	00:90:89:00:46:11		VPort 461	
EDS-518A-2S-2C-80	192.168.3.143	00:90:89:12:3C:4A		Managed Redun...	
EDS-508A-MM-2C	192.168.3.7	00:90:89:11:99:CF		Managed Redun...	
EDS-488A-MM-2C	192.168.3.24	00:90:89:0D:EA:F9		Managed Redun...	
EDS-408A-MM-2C	192.168.127.200	00:90:89:0D:66:73	Locked	Managed Redun...	
EDS-408A-MM-2C	192.168.127.253	00:90:89:12:34:95		Managed Redun...	
VFM-7205	192.168.3.35	00:90:89:09:09:09		Managed Redun...	
EDS-508A-2S-2C	192.168.3.146	00:90:89:12:8E:28		Managed Redun...	
VFM-704	192.168.127.200	00:90:89:34:35:43		Managed Redun...	
EDS-616	192.168.3.111	00:90:89:00:00:06		MOXA EDS-616...	Switch Location
PT 7620	192.168.3.108	00:90:89:01:01:01	Locked Inaccessi...	MOXA PT 7620...	Switch Location
EDS-428	192.168.3.191	00:90:89:55:55:96	Locked Inaccessi...	MOXA EDS-428...	Switch Location
EDS608	192.168.3.160	00:90:89:00:00:4A		MOXA EDS608...	
EDS608-MM-2C	192.168.3.171	00:90:89:09:FF:18		MOXA EDS608...	
VPort 351	192.168.3.206	00:90:89:10:09:00		VPort 351	

NOTE Broadcast Search can only search for devices connected to the same LAN subnet as the VPort. If your devices are located on a different LAN subnet, use the "Specify IP Address" function to search for the device by keying in the IP address.



- Double click the selected VPort, or use Internet Explorer to access the VPort's web-based manager (web console).

Network Environment without DHCP Server

If your VPort 354 is connected to a network that does not have a DHCP server, then you will need to configure the IP address manually. The default IP address of the VPort 254 is **192.168.127.100** and the default subnet mask is 255.255.255.0. Note that you may need to change your computer's IP address and subnet mask so that the computer is on the same subnet as the VPort.

To change the IP address of the VPort manually, access the VPort's web server, and then navigate to the **System Configuration → Network → General** page to configure the IP address and other network settings. Check the **Use fixed IP address** to ensure that the IP address you assign is not deleted each time the VPort is restarted.

Step 6: Log in to the VPort 354 web-based manager.

Type the IP address in the web browser's address input box and then press enter.

Step 7: Install the ActiveX Control Plug-in.

A security warning message will appear the first time you access the VPort's web-based manager. The message is related to installing the VPort ActiveX Control component to your PC or notebook. Click on **Yes** to install this plug-in to enable the IE web browser for viewing video images.



NOTE For Windows XP SP2 or above operating systems, the ActiveX Control component will be blocked for system security reasons. In this case, the VPort's security warning message window may not appear. Users should unblock the ActiveX control function or disable the security configuration to enable the installation of VPort's ActiveX Control component.

Step 8: Accessing the homepage of the VPort 354's web-based manager.

After installing the ActiveX Control component, the homepage of the VPort 354's web-based manager will appear. Check the following items to make sure the system was installed properly:

1. Video Images.
2. Audio Sound (make sure your PC's or notebook's sound is turned on).
3. Video Information.



Step 9: Accessing the VPort's System Configuration

Click on **System Configuration** to access the overview of the system configuration to change the configuration. Model Name, Server Name, IP Address, MAC Address, Firmware Version, and LED Status appear in the green bar near the top of the page. Use this information to check the system information and installation.

For details of each configuration, check the User's Manual on the software CD.

MOXA VPort 354 Series Video Encoder

Model Name: VPort 354-07K IP Address: 192.168.3.22 Firmware Version: 1.0
 Server Name: VPort 354 4CH Video Encoder MAC Address: 00:90:e8:00:46:32

Home
 Main Menu
 Overview
 System
 Network
 Video
 Serial Port
 Audio
 Alarm

Best viewed with IE 6.0 or above with resolution of 1280x1024

System Configuration

Welcome to the System Configuration pages. A brief description of each configuration group is given below. Click on a plus sign in the left column on the name of the page you would like to open.

Category	Item	Description and Content
System	General	Setting Host Name and Date/Time
	Account	Administrator, User and Demo Account Privileges Management
	Local Storage	Set up the local storage capability
	Diagnosis	Self-diagnostic report with system, communication, power and IO status
	System Log	System Log and operation information
	System Parameter	System parameters information and Import/Export function
	Firmware Upgrade	Remote Firmware Upgrade
	Factory Default	Reset to Factory Default
	Reboot	Device will reboot for restarting system
	Network	General
SMTP Server		Set up Primary and Secondary SMTP Server and E-mail accounts
FTP Server		Set up the Primary and Secondary FTP Server
DDNS		Configure DDNS
Universal PnP		Enable UPnP function
Multicast Setting		Set up Multicast (IGMP) Streaming
Accessible IP		Set up a list to control the access permission of clients by checking their IP
SNMP		Configure the SNMP settings
OneToS		Configure ToS(Type of Service)
HTTP Event Server		Set up the HTTP Event Server to send the event alarm action
Modbus/TCP	Enable Modbus/TCP function	

NOTE After accessing the VPort 354's web-based manager, administrators should access **System Configuration** → **System** → **Account** to set up the administrator's password and enable the authentication function. The administrator account name is admin. An authentication window will pop up requesting the account name and password each time the VPort 354 is accessed.

Connect to 192.168.3.22

VPort 354 4CH Video Encoder

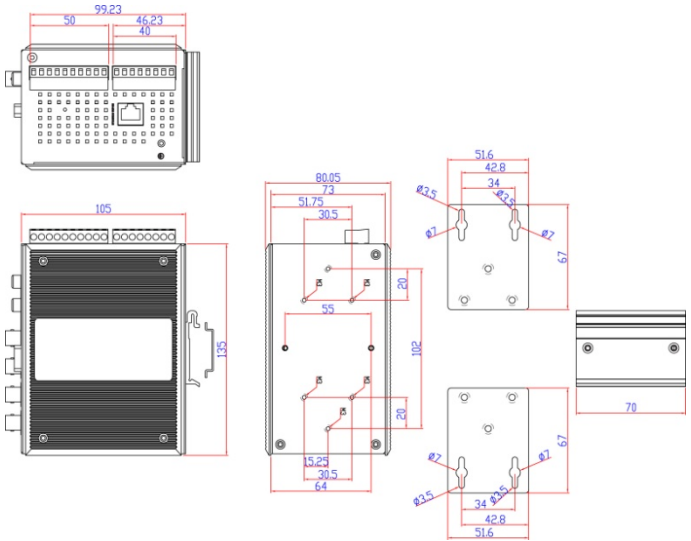
User name:

Password:

Remember my password

OK Cancel

Mounting Dimensions (unit = mm)



DIN-Rail Mounting

The aluminum DIN-Rail attachment plate should already be attached to the back panel of the VPort 354 when you take it out of the box. If you need to reattach the DIN-Rail attachment plate to the VPort 354, make sure the stiff metal spring is situated towards the top, as shown in the figures below.

STEP 1: Insert the top of the DIN-Rail into the slot just below the stiff metal spring.



STEP 2: The DIN-Rail attachment unit will snap into place as shown below.



To remove the VPort 354 from the DIN-Rail, simply reverse Steps 1 and 2 above.

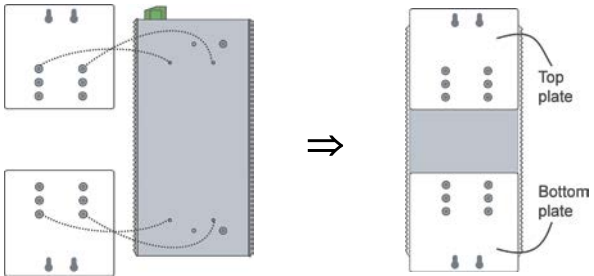
Wall Mounting (optional)

NOTE Wall-mounting kit (WK-46) ordered separately

For some applications, you will find it convenient to mount the VPort 354 on a wall, as illustrated below.

STEP 1:

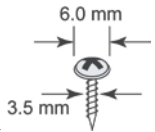
Remove the aluminum DIN-Rail attachment plate from VPort 354, and then attach the wall mount plates, as shown in the diagrams below.



STEP 2:

Mounting VPort 354 on the wall requires 4 screws. Use the VPort 354, with wall mount plates attached, as a guide to mark the correct locations of the 4 screws. The heads of the screws should be less than 6.0 mm in diameter, and the shafts should be less than 3.5 mm in diameter, as shown in the figure at the right.

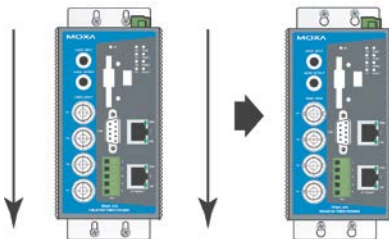
Do not screw the screws in all the way—leave a space of about 2 mm to allow room for sliding the wall mount panel between the wall and the screws.



NOTE Test the screw head and shank size by inserting the screw into one of the keyhole shaped apertures of the wall mounting plates, before it is screwed into the wall.

STEP 3:

Once the screws are fixed in the wall, insert the four screw heads through the large parts of the keyhole-shaped apertures, and then slide the VPort 354 downwards, as indicated below. Tighten the four screws for added stability.



Wiring Requirements



WARNING

Safety First!

Be sure to disconnect the power cord before installing and/or wiring your Moxa VPort 354.

Calculate the maximum possible current in each power wire and common wire. Observe all electrical codes dictating the maximum current allowable for each wire size.

If the current goes above the maximum ratings, the wiring could overheat, causing serious damage to your equipment.

You should also pay attention to the following items:

- Use separate paths to route wiring for power and devices. If power wiring and device wiring paths must cross, make sure the wires are perpendicular at the intersection point.
NOTE: Do not run signal or communications wiring and power wiring in the same wire conduit. To avoid interference, wires with different signal characteristics should be routed separately.
- You can use the type of signal transmitted through a wire to determine which wires should be kept separate. The rule of thumb is that wiring that shares similar electrical characteristics can be bundled together.
- Keep input wiring and output wiring separated.
- It is strongly advised that you label wiring to all devices in the system.

Grounding Moxa VPort 354

Grounding and wire routing help limit the effects of noise due to electromagnetic interference (EMI). Run the ground connection from the ground screw to the grounding surface prior to connecting devices.

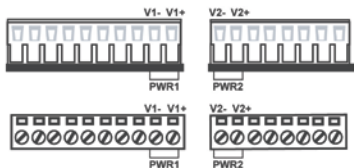


ATTENTION

This product is intended to be mounted to a well-grounded mounting surface, such as a metal panel.

Wiring the Redundant Power Inputs

The VPort 354 has two sets of power input, power input 1 and power input 2, which are located on the 10-pin and 8-pin terminal block connectors. Top and front views of the terminal block connectors are shown here.



STEP 1: Insert the negative/positive DC or AC wires into the V-/V+ terminals.

STEP 2: To keep the DC or AC wires from pulling loose, use a small flat-blade screwdriver to tighten the wire-clamp screws on the front of the terminal block connector.

STEP 3: Insert the plastic terminal block connector prongs into the terminal block receptor, which is located on the VPort 354's top panel.



ATTENTION

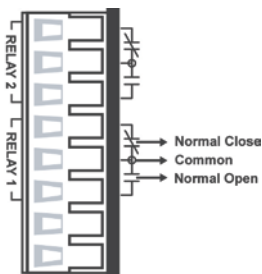
The power for this product is intended to be supplied by a Listed Power Unit, with the output marked as LPS, and rated to deliver 12 to 32 VDC at a maximum of 740 mA, or 18 to 30 VAC at a maximum of 890 mA.



ATTENTION

Before connecting the VPort to the AC/DC power inputs, make sure the DC power source voltage is stable.

Wiring the Relay Output



The VPort 354 has two sets of relay output, relay 1 and relay 2, which are located on the 8-pin terminal block connector. Each relay output consists of the 3 contacts of the terminal block on the VPort 354's top panel.

The relay output can be set up for:

1. System alarm: Power failure, Video loss and Network disconnected.
2. Event alarm: VMD (Video Motion Detection) and Digital Inputs.

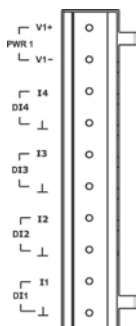


ATTENTION

The current and power capacity of the relay output is a maximum of 24 VDC @ 1A. You should be careful not to exceed this power specification.

Wiring the Digital Inputs

VPort 354 has four sets of digital input, DI1, DI2, DI3 and DI4. Each DI consists of two contacts of the 10-pin terminal block connector on VPort's top panel. Top and front views of one of the terminal block connectors are shown here.



STEP 1: Insert the negative (ground)/positive DI wires into the \pm /I1 terminals.

STEP 2: To keep the DI wires from pulling loose, use a small flat-blade screwdriver to tighten the wire-clamp screws on the front of the terminal block connector.

STEP 3: Insert the plastic terminal block connector prongs into the terminal block receptor, which is located on VPort 354's top panel.

Communication Connections

VPort 354 models have one RJ45 console port (RS-232 interface), and 2 10/100BaseT(X) Ethernet port or 2 100BaseFX (SC-type connector) fiber port.

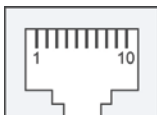
RS-232 Console Port Connection

VPort 354 has one RS-232 (10-pin RJ45) console port, located on the top panel. Use either an RJ45-to-DB9 or RJ45-to-DB25 cable (see the cable following wiring diagrams) to connect VPort 354's console port to your PC's COM port.

You may then use a console terminal program, such as Moxa PComm Terminal Emulator, to access VPort 354's console configuration utility.

RJ45 (10-pin) Console Port Pinouts

Pin	Description
1	---
2	DSR
3	---
4	GND
5	TxD
6	RxD
7	GND
8	---
9	DTR
10	---



10/100BaseT(X) Ethernet Port Connection

The 10/100BaseT(X) ports located on the VPort 354's front panel are used to connect to Ethernet-enabled devices.

Below we show pinouts for both MDI (NIC-type) ports and MDI-X (HUB/Switch-type) ports, and also show cable wiring diagrams for straight-through and cross-over Ethernet cables.

The 10/100BaseT(X) port of the VPort 354 is an Auto MDI port, so both straight-through cables and cross-over cables can be used to connect to Ethernet-enabled devices such as network switches.

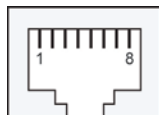
MDI Port Pinouts

Pin	Signal
1	Tx+
2	Tx-
3	Rx+
6	Rx-

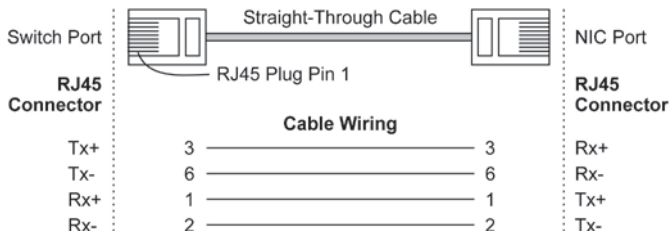
MDI-X Port Pinouts

Pin	Signal
1	Rx+
2	Rx-
3	Tx+
6	Tx-

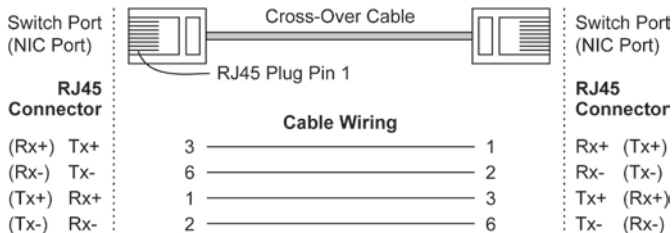
8-pin RJ45



RJ45 (8-pin) to RJ45 (8-pin) Straight-Through Cable Wiring



RJ45 (8-pin) to RJ45 (8-pin) Cross-Over Cable Wiring



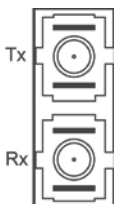
100BaseFX Ethernet Port Connection

The concept behind the SC port and cable is quite straightforward.

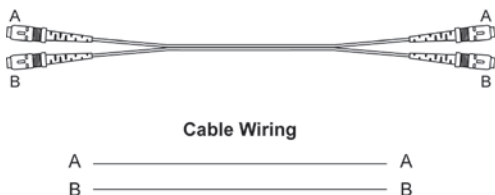
Suppose that you are connecting devices I and II. Contrary to electrical signals, optical signals do not require a circuit in order to transmit data. Consequently, one fiber optic cable is used to transmit data from device I to device II, and the other fiber optic cable is used to transmit data from device II to device I, for full-duplex transmission.

Remember to connect the Tx (transmit) port of device I to the Rx (receive) port of device II, and the Rx (receive) port of device I to the Tx (transmit) port of device II. If you make your own cable, we suggest labeling the two sides of the same line with the same letter (A-to-A and B-to-B, as shown below, or A1-to-A2 and B1-to-B2).

SC-Port Pinouts



SC-port to SC-port Cable Wiring



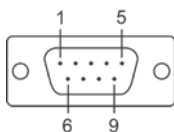
NOTE The 2 Ethernet ports on the VPort 354's front panel can be used as cascade links or to provide port redundancy. When used as cascade links, you will need to calculate the number of video streams in order to optimize the transmission bandwidth. Calculating the number of video streams is easy using the following simple formula:

Number of video streams that can be transmitted in cascade link
 $= 100 \times 0.8$ (20% for the buffer) \div bit rate of one video streams
 Therefore, if the number of video streams that can be transmitted in the cascade link is 16, a total of 4 VPort 354 (16 \div 4) units are allowed to be cascaded.

COM Port

A COM PORT is located on the front panel for connecting a PTZ motorized camera or serial device. The COM port transmits RS-232 or RS-422/485 signals over the TCP/IP network. Users can use this COM port (DB9 male connector) to monitor data or control a serial device, or for the control of a PTZ motorized camera.

RS-232/422/485 (Male DB9) Pinout



PIN	RS-232	RS-422 4-wire RS-485	RS-485 2-wire
1	DCD	TxD-(A)	---
2	RXD	TxD+(B)	---
3	TXD	RxD+(B)	Data+(B)
4	DTR	RxD-(A)	Data-(A)
5	GND	GND	GND
6	DSR	---	---
7	RTS	---	----
8	CTS	---	---
9	---	---	---

NOTE When V2.0 of the firmware is released, you will be able to connect serial devices to the TCP/IP network through this COM port.

PTZ port

A PTZ port is located on the VPort 354's front panel. The port is used to connect a PTZ motorized camera or device so that the camera or device can be controlled from the VPort over the IP network. The PTZ port supports RS-232 or RS-422/485 signals through a terminal block. The PTZ port pin assignments are shown in the following table.



PIN	RS-422/485	RS-232
1	GND	GND
2	R-	---
3	R+	RxD
4	T-\D-	---
5	T+\D+	TxD

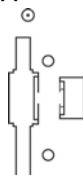
SD Card Slot

The front panel of Moxa's VPort 354 has an SD card slot that supports the SDHC interface. An SD card can be used for recording video if the network is down.

SD card slot with upper case



SD card slot without upper case



STEP 1: Open the upper case of the SD card slot.

STEP 2: Plug the SD card into the slot. Then the SD LED indicator will be flash in red.

STEP 3: When the SD card is mounted successfully, the SD LED indicator will light in green after 2 to 3 seconds. If the SD card mount fails, then the SD LED indicator will continuously flash in red. If this happens, repeat the above until the SD LED indicator light turns green.

STEP 4: Close the upper case and then go to the web-based manager to set up local storage functions.

NOTE Currently, the SDHC interface can support an SD card with up to 32 GB of storage space.

NOTE Follow these steps to remove the SD card:

- Step1:** Open the upper case. The SD LED indicator will light up in red.
- Step2:** Wait a few seconds to allow the SD card to complete existing file storing activity.
- Step3:** If the SD LED indicator light is off, it means the unmounting of the SD card was successful, and you can take out the SD card. If the SD LED indicator flashes in red, it means the unmounting of the SD card failed. At this point, you can take out the SD card. But you will need to reboot the VPort 354 to enable the SD card slot function for future SD cards.

LED Indicators

The front panel of Moxa's VPort 354 contains several LED indicators. The function of each LED is described in the table below.

LED	Color	State	Description
STAT	Green/ Red	Steady Red	Hardware initialization stage.
		Flashing Red	Software initialization stage.
		Steady Green	System has booted up and is ready to run.
		Flashing Green	Firmware is being upgraded.
PWR1	AMBER	On	Power is being supplied through power input PWR1.
		Off	Power is not being supplied through power input PWR1.
PWR2	AMBER	On	Power is being supplied through power input PWR2.
		Off	Power is not being supplied through power input PWR2.
FAULT	RED	On	One of the following 3 conditions is met: <ul style="list-style-type: none"> One of the 2 power inputs is disconnected. Video loss. Network disconnected. Users can configure these alarm settings on the system alarm page of system configuration.
		Off	Both power inputs are connected and are working properly, or the alarm is activated, there is no video loss and the network is connected.
V1 V2 V3 V4	GREEN	On	Video signal is detected
		Off	Video signal is not detected

Hardware Reset

A recessed RESET button is provided for restoring the system to the factory default settings. When the system fails to install properly, or operates abnormally, use the RESET button located on the top panel of the VPort 354 to restore the factory defaults.

To do this, use a pointed object such as a straightened paper clip or toothpick, to depress the reset button continuously. Release the reset button when the STAT LED stops flashing in red. At this point, the POST process will run, and the VPort will reboot. The STAT LED will light in green when the VPort has finished rebooting.

Specifications

Video

Video Compression	MPEG4, MJPEG
Video Inputs	4, BNC connector (1 Vpp, 75 ohms)
NTSC/PAL	Auto-sensing or manual

Video Resolution and FPS (frames per second):

	NTSC		PAL	
	Size	Max. FPS	Size	Max. FPS
QCIF	176 x 112	30	176 x 144	25
CIF	352 x 240	30	352 x 288	25
2CIF	704 x 240	30	704 x 288	25
4CIF	704 x 480	30	704 x 576	25

Video Viewing	<ul style="list-style-type: none">Adjustable image size and qualityTimestamp and text overlay
---------------	--

Audio

Audio Input	1 Line-in or MIC-in, RCA connector
Audio Output	1 Line-out, RCA connector

Network

Protocols	TCP, UDP, HTTP, SMTP, FTP, Telnet, NTP, DNS, DHCP, UPnP, RTP, RTSP, ICMP, IGMPv3, QoS (ToS), SNMP (V1/V2c/V3), DDNS, Modbus/TCP
Ethernet	2 10/100BaseT(X) auto negotiation speed RJ45 port, or 2 100BaseFX fiber port (SC connector)

Optical Fiber:

	100BaseFX	
	Multi Mode	Single Mode
Wavelength	1300 nm	1310 nm
Max. TX	-10 dBm	0 dBm
Min. TX	-20 dBm	-5 dBm
RX Sensitivity	-32 dBm	-34 dBm
Link Budget	12 dB	29 dB
Typical Distance	5 kma 4 kmb	40 kmc
Saturation	-6 dBm	-3 dBm

- 50/125 μ m, 800 MHz*km fiber optic cable
- 62.5/125 μ m, 500 MHz*km fiber optic cable
- 9/125 μ m, 3.5 PS/(nm*km) fiber optic cable

Serial Port

COM port	1 RS-232 or RS-422/485 port, DB9 male connector, 115.2 Kbps max. baudrate
PTZ port	1 port, RS-232 or RS-422/485 terminal block connector, 115.2 Kbps max. baudrate
Console port	1 RS-232 RJ45 port

GPIO

Digital Inputs	4, max. 8 mA Low: +13V to +30V High: -30V to +3V
Relay Output	2 (max. 24 VDC @ 1A)

Local Storage

SD socket	Standard SD socket, V2.0 (SDHC), with SD LED indicator
-----------	--

LED Indicators

STAT	Indicates if system is booted up properly or not
PWR1	Power 1
PWR2	Power 2
FAULT	Can be configured for system alarm, power failure, or network down.
V1, V2, V3, V4	Video input signal active

Power

Inputs	2 12/24 VDC or 24 VAC for redundancy
Consumption	Approximately 12W

Mechanical

Casing	IP30 protection, metal case
Dimensions (W x D x H)	80.2 x 135 x 105 mm (3.17 x 5.31 x 4.13 in.)
Weight	1.2 kg
Installation	DIN-Rail or wall mounting(optional WK-46 wall mounting kit required)

Environmental

Operating Temperature	0 to 60°C (32 to 140°F) -30 to 70°C (-22 to 157°F) for -T models
Storage Temperature	-40 to 85°C (-40 to 185°F)
Ambient Relative Humidity	5 to 95% (non-condensing)

Regulatory Approvals

EMI	FCC Part 15, CISPR (EN55022) class A
EMS	EN61000-4-2 (ESD), Level 3 EN61000-4-3 (RS), Level 3 EN61000-4-4 (EFT), Level 3 EN61000-4-5 (Surge), Level 3 EN61000-4-6 (CS), Level 2 EN61000-4-8 EN61000-4-11
Shock	IEC60068-2-27
Freefall	IEC60068-2-32
Vibration	IEC60068-2-6
Warranty	5 years

Alarm Features

- Video Motion detection with sensitivity tuning
- Daily repeat timing schedule
- JPEG snapshots for pre/trigger/post alarm images
- Automatic transfer of stored images via email or FTP with event-triggered actions
- HTTP Action setting for customized alarm messages being sent via HTTP Event Server and CGI events

PAN/TILT/ZOOM

- PTZ camera is controlled through RS-232/485
- Automatic PTZ camera model detection
- Supported devices and protocols:
Dyncolor DynaDome, Pelco D, Pelco P, Cohu, Custom Camera
- PTZ driver upload
- Transparent PTZ Control for controlling the PTZ camera with legacy PTZ control panel or keyboard

Security

- User level password protection
- IP address filtering

Recommended Minimum Viewing System Requirements

- Pentium 4, 2.4 GHz
- 512 MB memory
- Windows XP/2000 with SP4
- Internet Explorer 6.x
- DirectX 9.0c

Software Bundled Free

VPort SDK PLUS Includes CGI commands, ActiveX Control, and API library for customized applications or system integration for third-party developers (the latest version of SDK is available for download from Moxa's website).

Technical Support Contact Information www.moxa.com/support

Moxa Americas:

Toll-free: 1-888-669-2872
Tel: 1-714-528-6777
Fax: 1-714-528-6778

Moxa China (Shanghai office):

Toll-free: 800-820-5036
Tel: +86-21-5258-9955
Fax: +86-21-5258-5505

Moxa Europe:

Tel: +49-89-3 70 03 99-0
Fax: +49-89-3 70 03 99-99

Moxa Asia-Pacific:

Tel: +886-2-8919-1230
Fax: +886-2-8919-1231