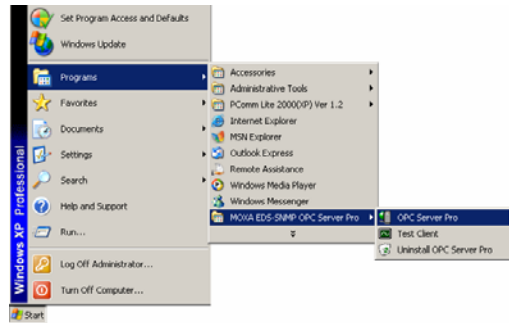


**STEP 8:** To start running the Moxa EDS-SNMP Server Pro software from a Windows XP/2000/NT (Professional or Server) machine, click on **Start → Programs → Moxa EDS-SNMP OPC Server Pro → OPC Server Pro**. You may configure the software once the program starts running.



#### 4. Service Information

Customer satisfaction is our number one concern. To ensure that customers receive the full benefit of our products, we have created an online Customer Support area at:

<http://www.moxa.com>

Use the following e-mail address to contact a Moxa technical support engineer:

[support@moxanet.com](mailto:support@moxanet.com)



Click here for online support:  
[www.moxa.com/support](http://www.moxa.com/support)

The Americas: +1-714-528-6777 (toll-free: 1-888-669-2872)  
Europe: +49-89-3 70 03 99-0  
Asia-Pacific: +886-2-8919-1230  
China: +86-21-5258-9955 (toll-free: 800-820-5036)

© 2008 Moxa Inc., all rights reserved.  
Reproduction without permission is prohibited.

**P/N: 1802003001100**



## Moxa EDS-SNMP OPC Server Pro Quick Installation Guide

Second Edition, June 2008

### 1. System Requirements

- Computer/Processor: 266 MHz or higher Pentium-compatible CPU
- Memory: 128 MB or greater
- Operating System: Windows XP, Windows 2000 and Windows NT with Administrator privileges (must use Professional or Server version)
- Disk space: 20 MB for basic installation and system use.

### 2. Hardware Support

Moxa EDS-SNMP OPC Server Pro can be integrated seamlessly with the leading HMI/SCADA software to create a comprehensive Ethernet Network Management Solution for all SNMP compatible devices. Moxa EDS-SNMP OPC Server Pro, which supports OPC Data Access 2.0 and ranks as a new generation of industrial software applications, was implemented using advanced programming concepts from the latest OPC specifications.

#### NOTE

Close all applications before installing the software. Be sure the cables between the server's Ethernet card and EDS are properly connected before configuring online devices. All installation steps and program startup procedures are the same for Windows XP, Windows 2000 and Windows NT.

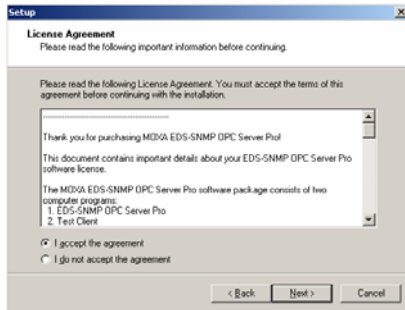
### 3. Installing Moxa EDS-SNMP OPC Server Pro on Windows 2000/XP/NT

**STEP 1:** Insert the Moxa EDS-SNMP OPC Server Pro CD into your computer's CD drive and wait for the installation program to start running. If the installation program does not start running automatically, run the setup program by double clicking on the **setup.exe** icon.

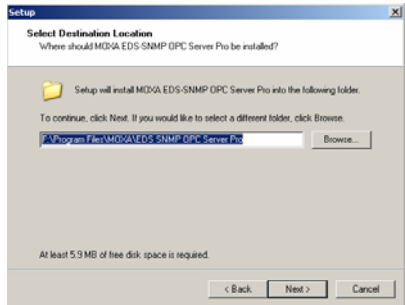
**STEP 2:** Click on **Next** to install EDS-SNMP OPC Server Pro.



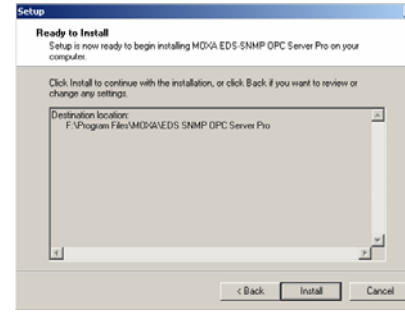
**STEP 3:** Read the License Agreement carefully, and then click the **I accept the agreement** radio button. Click on **Next** to continue.



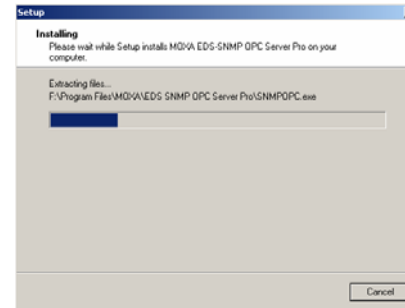
**STEP 4:** The setup program will specify a default folder in the “Program Files” folder. Modify if needed, and then click on **Next** to continue.



**STEP 5:** Verify that the folder is correct, and then click on **Install** to continue.



**STEP 6:** Wait while the software is installed.



**STEP 7:** Click on **Finish** to exit the setup program.

