

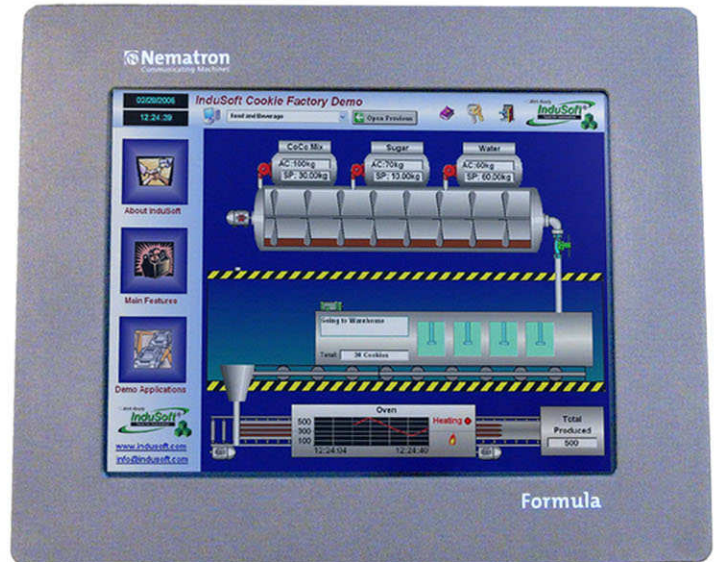
Formula Monitors - 15" & 17" Displays

Nematron monitors are perfect for tough industrial environments and applications where space is limited. These visibly superior active-matrix TFT monitors are available in 15 inch and 17 inch screen sizes with optional resistive touch screens and are equipped with both standard VGA & DDC1/2 'Plug & Play' input options.

Nematron industrial monitors meet NEMA 4/12 or IP65 environmental protection standards when properly installed in a rated enclosure. Wall or panel mounting is a simple and effective with the superior and easy to use panel clip system and with a maximum depth of 75mm they require minimal space. Alternatively, Nematron monitors come with VESA Standard attachment points for folding arm mounting. All units feature our Cable-Tidy guide system for neat cable management and are available with high quality powder coated steel or stainless steel bezels



In applications requiring a displaced monitor and system unit configuration, the Formula Industrial Engine and monitor provide a complete and reliable control solution.



Specifications

- 15" and 17" Screen Sizes with Optional Resistive Touch Screen
- Powder coated front panel - Stainless Steel Option
- Provision for VESA mounting arm systems
- Resolution 15" 1024x768 - 17" 1280x1024
- Brightness 250 nits for both 15" and 17" Monitor
- Standard VGA Video input (DB-15)
- Standard DVI (Digital Video Interface) input
- Audio in from PC / Audio out to Speaker
- On-Screen-Display controls (OSD)
- USB connection for Touch Screen (Optional)
- Advanced Cable Guide System
- External Power Adapter Included (Input Auto ranging 90-264VAC/Output 12V)
- Operating Temperature 0-50°C
- Humidity 10% to 90% non condensing
- CE Marked

Monitor Size	Cut-Out	Front Dimensions	Depth
15"	397mm (W) x 311mm (H)	417mm (W) x 333mm (H)	74.5mm
17"	431mm (W) x 354mm (H)	452mm (W) x 377mm (H)	75.1mm



Base Specifications

- 15" and 17" Screen Sizes
- Resolution 15" 1024 x 768
- Resolution 17" 1280 x 1024
- Brightness 250 nits
- 16M Colors
- Standard VGA Video Input (DB-15)
- Standard DVI (Digital Video Interface) input
- Audio IN/Audio Speaker OUT
- On-Screen-Display Controls
- Advanced Cable Guide system
- Powder Coated Front Panel
- Provision for VESA mounting arm systems
- External Power Adapter Voltage: 100-240 VAC Full Range Included
- Operating Temperature 0-50°C
- Humidity 10% to 90% non-condensing
- CE Marked
- RoHS Compliant

Configurable Options

Touch screen with USB Controller, Stainless Steel Front

How To Order

Display

- 5 15" TFT Display
- 7 17" TFT Display

Keyboard

- 0 No Front Keyboard

Touchscreen

- 1 No Touch Screen
- 7 Dynapro Touchscreen & Standard USB Controller
- 6 ELO Touchscreen & ELO Touch Controller (USB)

Options

- 0 No Options
- P Standard Steel Front no-logo
- S Stainless Steel Front Panel with Nematron Logo
- N Stainless Steel Front Panel without Logo

I F

M

0

-

0

0

0

0

0

0

0

Display

Keyboard Touchscreen

Options

15" & 17" DIMENSIONS

