

TURCK

Industrial
Automation

**ROTARY
INDUCTIVE
ANALOG
SENSORS**



www.turck.com

ROTARY INDUCTIVE ANALOG

WHAT IS A ROTARY INDUCTIVE ANALOG SENSOR?

TURCK's rotary inductive analog sensor operation is based on the RLC (Resistance Inductive Capacitance) principle and incorporates an advanced microprocessor and precisely positioned emitter and receiver coils on a printed circuit board.

The emitter coils are excited with a high frequency AC field. The interaction between the moving position element and the receiver coils creates different voltages that are induced into the receiver coils which determines the position of the target.

The tuned positioning element can be mounted in a number of ways, but because it is contactless, there is no wear to the sensor or to the positioning element. Irregular rotating shafts can cause vibration and offset of the positioning element. Because of the contactless arrangement of the sensor and positioning element there is a $\leq 3\text{mm}$ compensation of lateral offset. The absence of a shaft and bearing enables easy adaption to many applications.

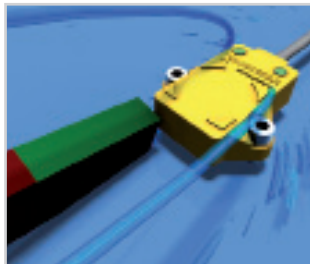
WHERE CAN I USE A ROTARY INDUCTIVE ANALOG SENSOR?

The rotary inductive analog sensor can be used in a variety of applications and industries.

- Mobile equipment: Detection of the boom angle, platform rotation and ladder position.
- Solar panel tracking and wind turbine blade pitch.
- Commercial: Gate or door position in trains and buses.

WHY CHOOSE TURCK ROTARY INDUCTIVE ANALOG SENSORS?

High noise immunity –
as a result of the RLC circuit. All products meet IEC 60529 and EN 60529 standard for noise immunity. The sensor is also inherently weld field immune.



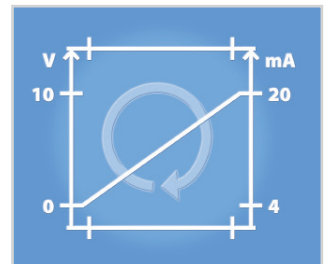
Robust housing –
Made of high quality plastic. The IP67 rated sensor protects the sensor from most chemicals and oils. It is also shock and vibration resistant up to 30g's (11ms) and 55 Hz (1mm displacement).



High linearity and precision–
The new rotary inductive analog sensor provides high precision measurement and a repeatability of 0.09° with a measuring range of 360° .



Analog outputs –
The standard units feature analog outputs 0-10 V and 4-20 mA with operating voltage of 15-30 VDC or 0.5-4.5 V with operating voltage of 8-30 VDC. All standard units have 12 bit resolution.



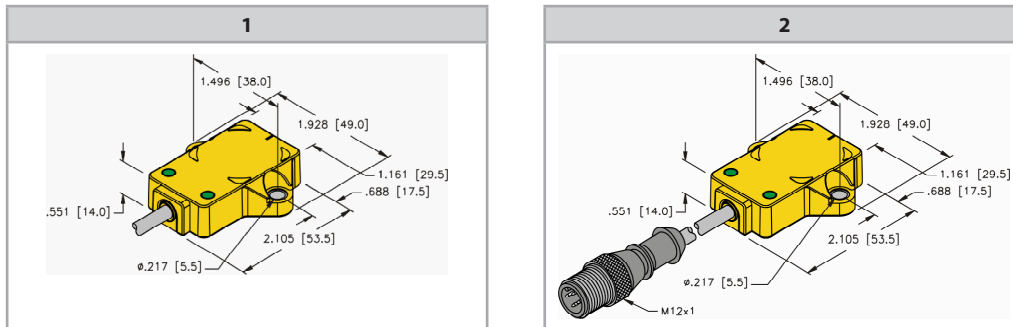
Part Number	ID Number	Measuring Range	Resolution (12 bit)	Ambient Temperature	Operating Voltage	Voltage Output	Current Output	Dimensional Drawing	Wiring Diagram
Ri360P2-QR14-LU4X2/S97	M1590822	0-360°	≤ 0.09°	-40° to +167°F (-40° to +75°C)	8-30 VDC	0.5-4.5 V	N/A	1	1
Ri360P2-QR14-LiU5X2	M1590820	0-360°	≤ 0.09°	-13° to +167°F (-25° to +75°C)	15-30 VDC	0-10 V	4-20 mA	1	2
Ri360P2-QR14-LiU5X2-0.3-RS 4T	M1590821	0-360°	≤ 0.09°	-13° to +167°F (-25° to +75°C)	15-30 VDC	0-10 V	4-20 mA	2	3

Note: Positioning element, P2-RiQ14R, is included with sensor.

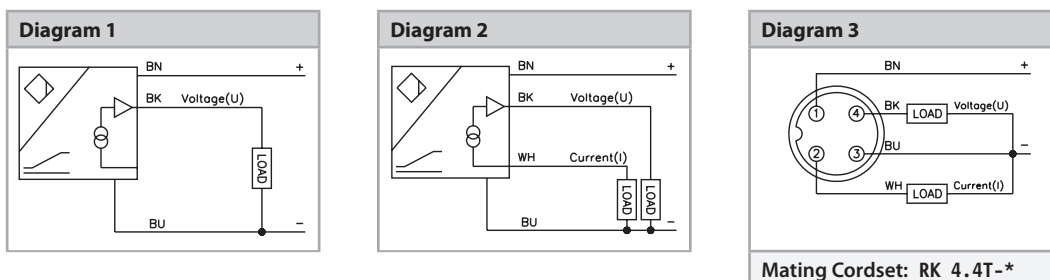
Technical Specifications:

Linearity deviation	≤ 0.3% f.s.	Power consumption	< 100 mA
Temperature drift	≤ ±0.01% K	Housing	Rectangular, QR14
Lateral offset	≤ 3 mm	Dimensions	53.5 x 49 x 14 mm
Residual ripple	≤ 10% Vpp	Housing material	Plastic, PBT-GF30-V0
Rated insulation voltage	≤ 0.5 kV	Electrical connection	Cable/Connector
Short-circuit protection	yes	Vibration resistance	55 Hz (1 mm)
Wire-break/Reverse polarity protection	yes/fully	Shock resistance	30 g (11 ms)
Load resistance voltage	≤ 0.4 kΩ	Degree of protection	IP67
Load resistance current output	≤ 0.4 kΩ	Power-on indication	LED, green
Sampling rate	700 Hz	Measuring range indication	Multifunction LED, green

Dimensions:



Wiring diagrams:

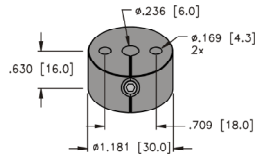


Mating Cordset: RK 4.4T-*

Rotary inductive analog sensors – Accessories

Positioning element

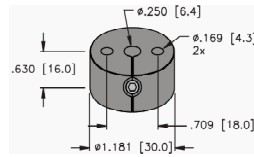
P1-Ri-QR14 [M1590812]



Shaft size: 6 mm
Positioning element, operating at a distance of 0-6 mm to the sensor surface

Positioning element

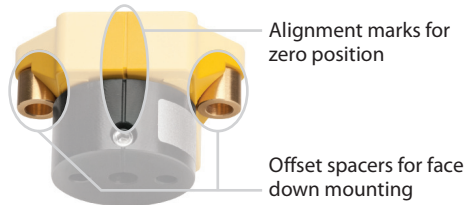
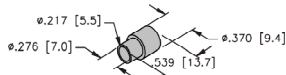
P2-Ri-QR14 [M1590819]



Shaft size: 1/4"
Positioning element, operating at a distance of 0-6 mm to the sensor surface (standard with sensor)

Spacer sleeve

DS-Ri-QR14 [M1590814]



Alignment marks for zero position

Offset spacers for face down mounting



USA

TURCK
3000 Campus Drive
Minneapolis, MN 55441
Phone: (763) 553-7300
Fax: (763) 553-0708
Application Support:
1-800-544-7769



MEXICO

TURCK MEXICO S. DE R.L. DE C.V.
Carr. Saltillo-Zacatecas km 4.5 s/n
Parque Industrial "La Angostura"
Saltillo, COAH. C.P. 25070
Mexico
Phone: +52 (844) 411-6647/46
Fax: +52 (844) 482-6926
Local Toll Free: 01-800-01-88725
E-mail: ventasmexico@turck.com



CANADA

CHARTWELL AUTOMATION, INC.
140 Duffield Drive
Markham, Ontario
Canada, L6G 1B5
Phone: (905) 513-7100
Fax: (905) 513-7101
Toll Free: 1-877-513-7769



GERMANY

WORLD HEADQUARTERS
Hans TURCK GmbH & Co. KG
Witzlebenstrasse 7
D-45472 Muelheim an der Ruhr
Federal Republic of Germany
Phone: (+49) 208-49 52-0
Fax: (+49) 208-49 52 264



AUSTRALIA

TURCK Australia Pty. Ltd.
Unit 5, 6-7 Gilda Court
Mulgrave, Victoria 3170
Australia
Phone: (+61) 3 9560 9066
Fax: (+61) 3 9560 1620
Local Toll Free: 1300 132566
E-mail: turckaustralia@turck.com

www.turck.com

©2011 by TURCK Inc. All rights reserved.
No part of the publication may be reproduced without written permission.