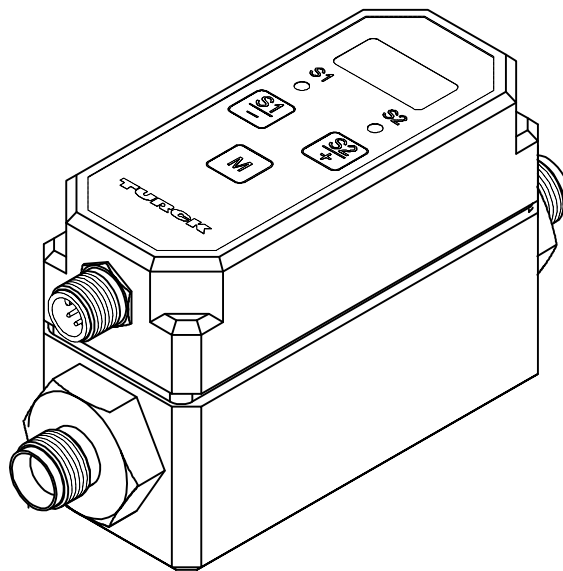
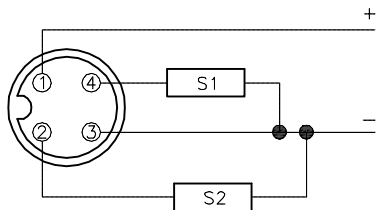
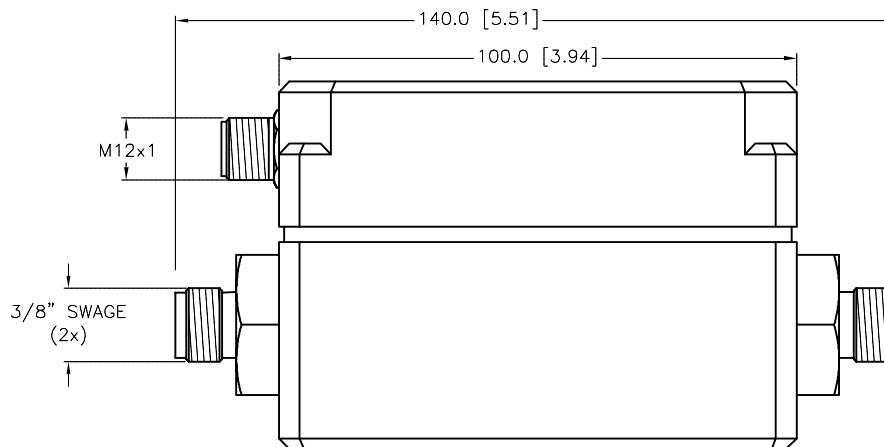
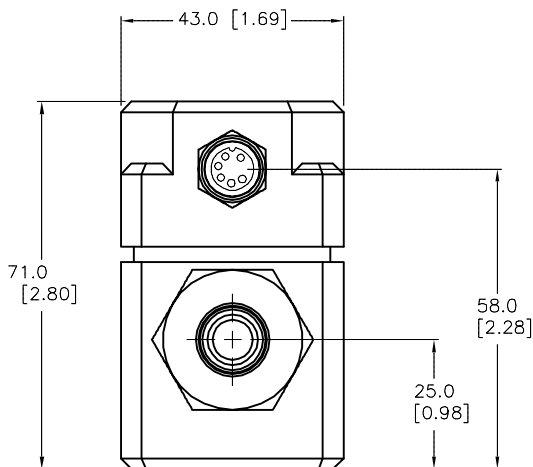


WIRING DIAGRAM



SPECIFICATIONS

OPERATING VOLTAGE	24 VDC ± 10%
CURRENT CONSUMPTION	≤ 100 mA
AMBIENT TEMPERATURE	0°C to +60°C (+32°F to +140°F)
OUTPUT 1	FLOW-PNP, NO/NC, PROGRAMABLE
OUTPUT 2	FLOW or TEMP.-PNP,NO/NC,PROGRAMABLE
SWITCHING CURRENT	0.2 A
LOAD OUTPUT 2	200-500 Ω
MEDIUM TEMPERATURE	-26°C to +90°C (-14°F to +194°F)
OPERATING RANGE (FLOW MONITORING)	
WATER	0.2-4.0 GPM
ETHYLENE GLYCOL/WATER 0-70%	0.2-4.0 GPM
ADJUSTMENT SETPOINT RANGE 1	
FLOW SETPOINT	0.3-5.0 GPM
ADJUSTMENT SETPOINT RANGE 2	
FLOW SETPOINT	0.3-5.0 GPM
TEMPERATURE SETPOINT	+15°F to +194°F
HYSTERESIS SETPOINT 1	
FLOW	0.1-0.5 GPM
HYSTERESIS SETPOINT 2	
FLOW	0.1-0.5 GPM
TEMPERATURE	+1°F to +10°F
DELAY	
SWITCH ON/OFF	0-50 SEC/0-50 SEC
SENSOR MATERIAL	AISI 316 Ti/FKM
HOUSING MATERIAL	PBT
DEGREE OF PROTECTION	IP65
COMPRESSIVE STRENGTH	290 psi (20 bar)



SOURCE DRAWING - FOR REFERENCE ONLY

NOTE:

1. ALL DIMENSIONS ARE REFERENCE.
2. BASE PLATE IS AN ACCESSORY.
3. FSV-SS 3/8" KIT (A9183) IS AN ACCESSORY.

RELATED DOCUMENTS		3RD ANGLE PROJECTION		<p>3000 CAMPUS DRIVE MINNEAPOLIS, MN 55441 1-800-544-7769 (763) 553-7300 (763) 553-0708 fax turck.com</p>		
1.						
MATERIAL		DRFT	RDS	DATE	12/14/06	
FINISH		DSGN	MH	SCALE	1=1.5	
<p>ALL DIMENSIONS DISPLAYED ON THIS DRAWING ARE FOR REFERENCE ONLY</p> <p>CONTACT TURCK FOR MORE INFORMATION</p>		UNIT OF MEASUREMENT		DESCRIPTION		
		MILLIMETER [INCH]		FTCI-3/8D10A4P-2UP8X-H1141		
		DO NOT SCALE THIS DRAWING			IDENTIFICATION NO.	REV
					M6870806	A
					FILE: M6870806	SHEET 1 OF 1

A	DRAWING RELEASE	RDS	12/21/06	
REV	DESCRIPTION	BY	DATE	ECO NO.