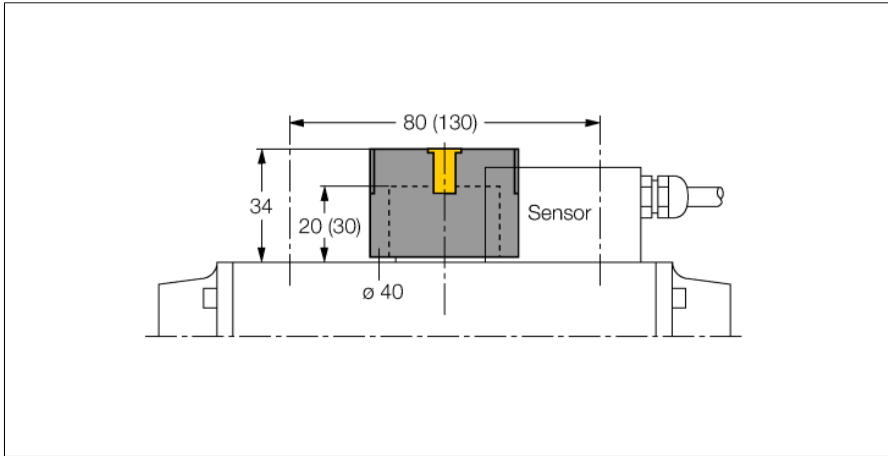


Accessories
Actuation kit (puck)
BTS-DSU35-EB1

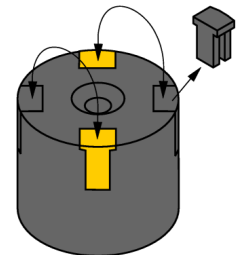


- End position damped
- For clockwise or counter-clockwise rotating drives
- Displays rotatable by 90 °
- Hole pattern on flange surface: 30 x 80 mm (30 x 130 mm)
- Connection shaft (shaft extension) height: 20 mm (30 mm)/Ø: max. 30 mm
- Maximum slide ring diameter: 34 mm

General description


Dual sensors are especially designed for position detection in rotary actuators. They combine the reliability of non-contact inductive sensors with the flexibility of a modular housing system. A broad range of practice-oriented accessories ensure optimal adaption to your system.

Type designation	BTS-DSU35-EB1
Ident-No.	6900225
Design	Accessories for dual sensors, Ni4-DSU35...
Housing material	Plastic, PP-GF30
Tightening torque fixing screw	1.5 Nm
Included in delivery	2 M5 x 12 hex cap screws, 2 D5 lock washers, 1 countersunk screw M6 x 25



Accessories
Actuation kit (puck)
BTS-DSU35-EB1

Accessories

Type code	Ident-No.	Description	Dimension drawing
BTS-DSU35-CLIP/YE	6900429	Yellow display clips, suitable for BTS-DSU35-EB actuators, packaging unit: 10	
BTS-DSU35-CLIP/BK	6900430	Black display clips, suitable for BTS-DSU35-EB actuators, packaging unit: 10	