



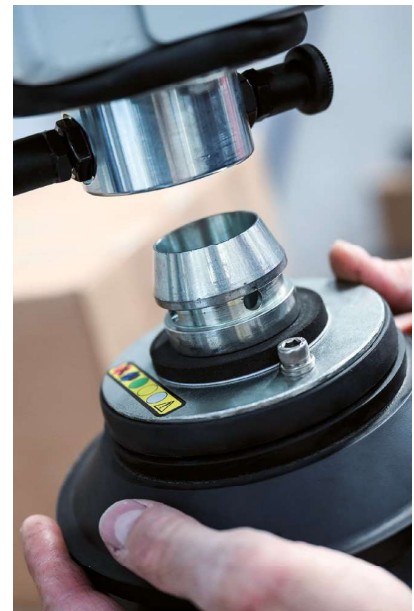
Lifting to Empower

Compact heavy lifting solutions with true Plug & Play functionality

What are you lifting?

We offer two different solutions to automate lifting needs for any of your products. The Stationary Cobot Lift is a robotic base for Cobots mounted on the floor. It boosts cobots' payload from 10 to 45 kg and is ideal for a collaborative palletizing and depalletizing, or pick & place tasks.

The Mobile Cobot Lift integrates robot, controller, teach pendant, vacuum tube pump and also crane in a single unit for maximum flexibility and mobility, with the added benefit of quick installation.



Functions and Benefits

Our solutions are designed to lift a wide range of products, such as sacks, buckets, sheets and baggage, among others, both in palletizing and pick and place operations. We serve customers from various different industries all around the world.



Which is your industry?

Relying on flexible installations at production floors worldwide in several industries, we thrive to reduce footprint by 50% compared to industrial deployments. Without a need for neither a fence nor a cage, our concept allows Cobots to exceed their payloads

by lifting heavy loads up to 45Kg while maintaining consistent vacuum power. As a result, we provide a complete solution by combining the strength of a vacuum tube, and the intelligence of collaborative robots.



Food & Beverage



Warehouse/Logistics



Automotive



Airports/Aviation



Others



Increasing Cobot payload

Increase lifting capacity of Collaborative Robots up to 45kg.



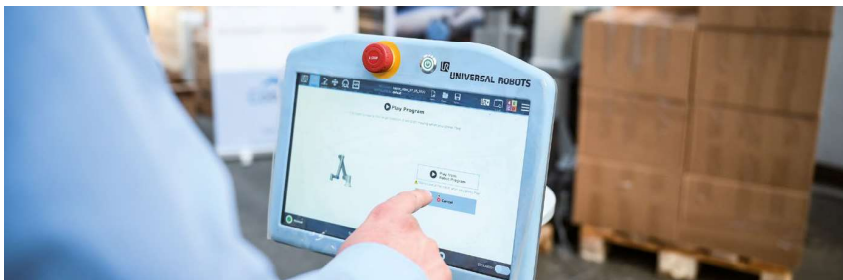
Compact and mobile solution

Smaller footprint, no fence around euro pallets.
Easily moved with a lifter.



Improve safety

Cobot Lift's technology ensures worker's safety and decreases ergonomic risks.

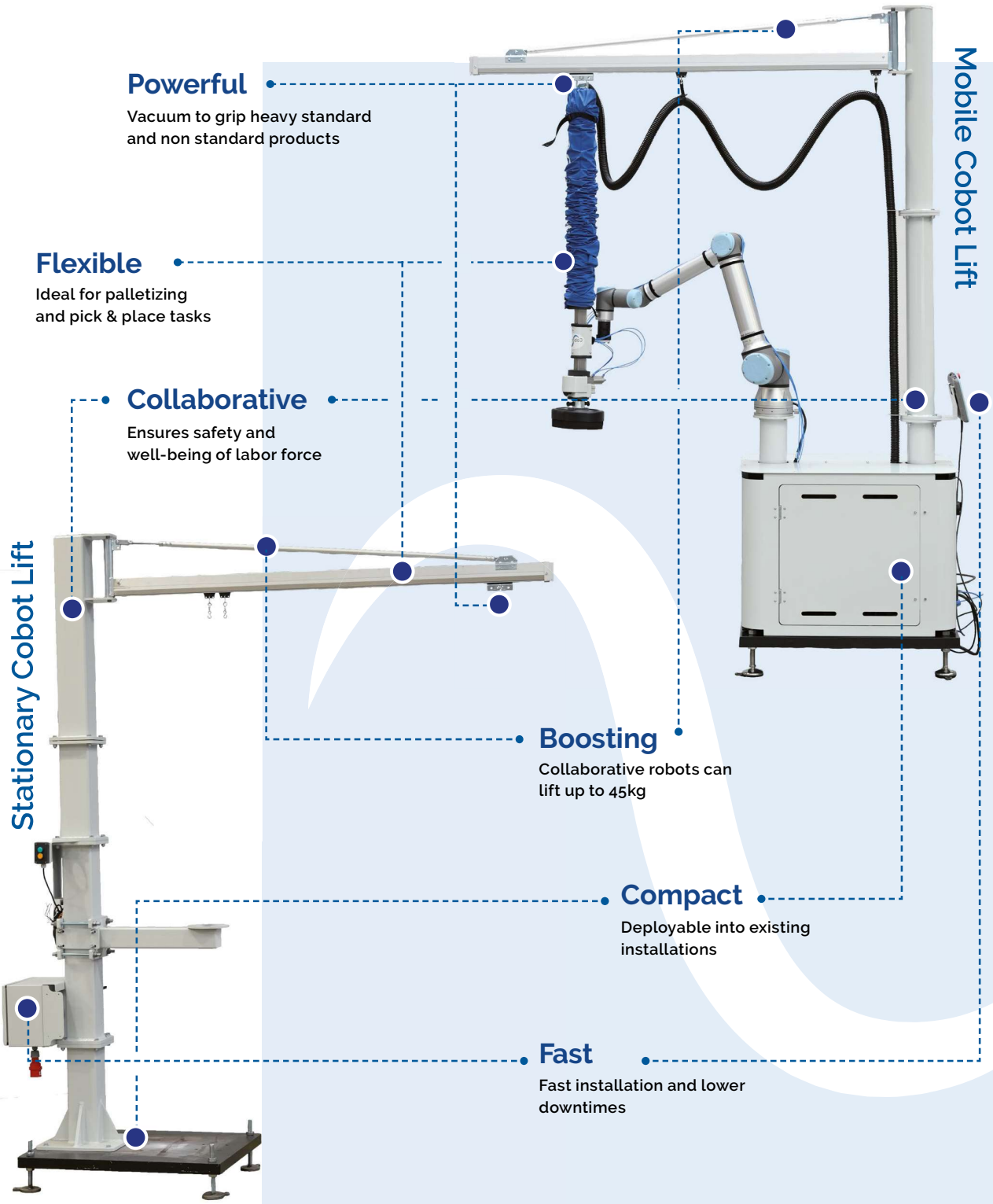


Fast installation

The pre-programmed Cobot Lift ensures easy installation and integration in any production environment.

Palletizing solutions

Being dedicated to making the world a better place with collaborative robots, our solutions allow companies to have minimum ergonomic injuries risks during palletizing tasks.



Technical specification

Technical Details	Stationary Cobot Lift	Mobile Cobot Lift
Payload	5-45kg	
Reach	Up to 1400 mm	
Power Supply	400V/16 Amp	
Air Supply	5-8 bar	
Stacking Height	Maximum 1.600 mm (depending on product and reach)	
Robot Position Height	The arm on which the Cobot is placed can be adjusted from 700-1.400 mm, extra crane module of 0.5 meter length is included for more flexibility	Approximately 120 cm
Dimensions – complete solution with Cobot Lift, vacuum tube lift, crane and UR arm	Footprint of crane 40x40 cm Standard height 3,5 meter	Footprint (80x100 cm) Height 3,2 meter
Certifications and standards	Declaration of Incorporation Directive 2006/42 EC, Annex II B	
Collaborative Robot, Compatibility	UR10 CB3 or e-series	
Programming	Cobot Lift URCap in Polyscope	
Vacuum Tube Lift	120 mm vacuum tube and 3 kW vacuum pump	
Accessories	<ul style="list-style-type: none"> • Suction foot for sacks • Suction cup for boxes and buckets • Quick connector for end effector • Silencer box for vacuum pump • Cobot Lift rotating head • Cobot Lift booster valve • Long stroked vacuum tube • 1-meter extra column 	<ul style="list-style-type: none"> • Suction foot for sacks • Suction cup for boxes and buckets • Quick connector for end effector • Cobot Lift rotating head • Cobot Lift booster valve • Long stroked vacuum tube • 1-meter extra column
End Arm Tool and Effector	Can be combined with any kind of gripper and also non-vacuum gripper (without brackets)	

About us

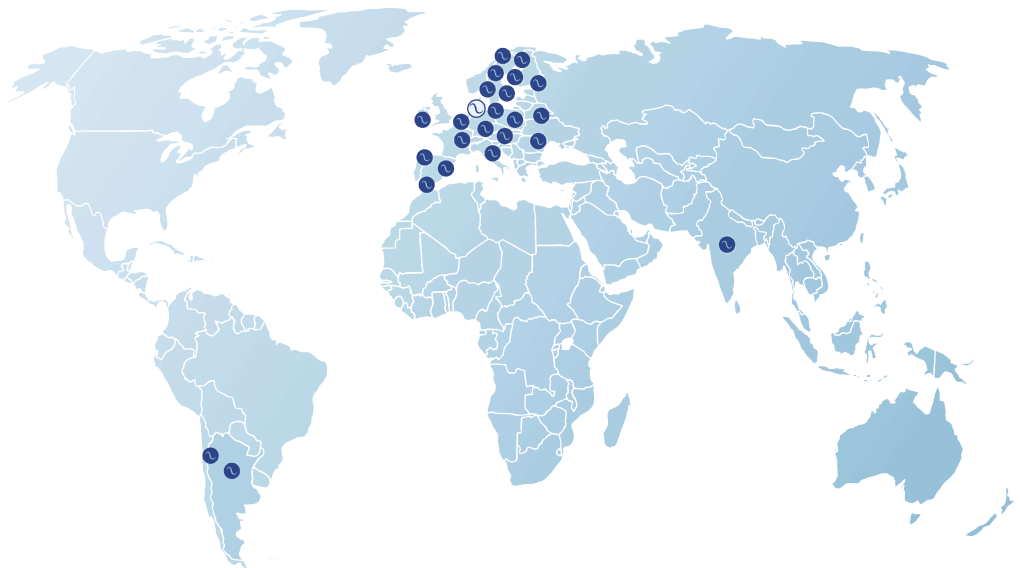
Continuous innovation and a passion for automation is embedded in our DNA. We are continuously pushing boundaries of what's possible in the world of robotics through the promotion of passion, responsibility, innovation and integrity.



Fully equipped with innovative technology and easy-to-use features, Cobot Lift's robotics cell solutions are designed to facilitate the automation of any production plant and are currently breaking new ground in the era of advanced manufacturing by enabling Cobots to lift payloads up to 45kg.

We have established an extensive network of distributors in over 20 countries. With a global presence across European, Asian and American regions, we have been nominated as the Top 10 Robotics Solution Providers in 2020 by CIO Applications Europe.

Our Locations





Lifting to Empower



COBOT LIFT APS

📍 Industrivej 6
4200 Slagelse,
Denmark

🌐 www.cobotlift.com

✉ sales@cobotlift.com

☎ +45 30 72 14 60

 COBOTLIFT

 COBOTLIFT

 COBOTLIFT