

InTouch® HMI Documentation

Addendum

Invensys Systems, Inc.

Revision B
Last Revision: 10/24/09



Copyright

© 2009 Invensys Systems, Inc. All Rights Reserved.

All rights reserved. No part of this documentation shall be reproduced, stored in a retrieval system, or transmitted by any means, electronic, mechanical, photocopying, recording, or otherwise, without the prior written permission of Invensys Systems, Inc. No copyright or patent liability is assumed with respect to the use of the information contained herein. Although every precaution has been taken in the preparation of this documentation, the publisher and the author assume no responsibility for errors or omissions. Neither is any liability assumed for damages resulting from the use of the information contained herein.

The information in this documentation is subject to change without notice and does not represent a commitment on the part of Invensys Systems, Inc. The software described in this documentation is furnished under a license or nondisclosure agreement. This software may be used or copied only in accordance with the terms of these agreements.

Invensys Systems, Inc.
26561 Rancho Parkway South
Lake Forest, CA 92630 U.S.A.
(949) 727-3200

<http://www.wonderware.com>

For comments or suggestions about the product documentation, send an e-mail message to productdocs@wonderware.com.

Trademarks

All terms mentioned in this documentation that are known to be trademarks or service marks have been appropriately capitalized. Invensys Systems, Inc. cannot attest to the accuracy of this information. Use of a term in this documentation should not be regarded as affecting the validity of any trademark or service mark.

Alarm Logger, ActiveFactory, ArchestrA, Avantis, DBDump, DBLoad, DT Analyst, Factelligence, FactoryFocus, FactoryOffice, FactorySuite, FactorySuite A², InBatch, InControl, IndustrialRAD, IndustrialSQL Server, InTouch, MaintenanceSuite, MuniSuite, QI Analyst, SCADAAlarm, SCADASuite, SuiteLink, SuiteVoyager, WindowMaker, WindowViewer, Wonderware, Wonderware Factelligence, and Wonderware Logger are trademarks of Invensys plc, its subsidiaries and affiliates. All other brands may be trademarks of their respective owners.

Contents

InTouch HMI Documentation Addendum	5
Summary of Documentation Changes	5
InTouch HMI Installation Help	5
InTouch HMI Software Installation	5
InTouch HMI Concepts and Capabilities Guide	8
InTouch Basic Objects	8
Exporting and Importing InTouch Tags	8
InTouch HMI Application Management and	
Extension Guide	8
Publishing a Stand-alone InTouch Application	8
Managing Application Settings for Vista and	
Windows 2008 Operating Systems	9
Using Operating System-Based Security	9
Managing InTouch Applications	10
InTouch HMI Data Management Guide	10
Saving and Printing a Tag Cross-Reference List	10
Memory Tag Properties	10
I/O Tag Properties	11
Understanding InTouch Remote Reference	
Limits	11
Understanding InTouch Remote Reference	
Limits	12
InTouch HMI Visualization Guide	12
Printing Information about WindowMaker	
Objects	12
Printing Information about InTouch Windows	13

Selecting Tags or Attributes	13
InTouch HMI SmartSymbols Guide.....	13
InTouch HMI and ArchestrA Integration Guide	13
Published InTouch Applications.....	13
Adding Files for a Managed InTouch Application....	14
Language Switching for a Managed InTouch Application.....	14
InTouch HMI Alarms and Events Guide	14
Example Alarm Queries.....	14
Creating Custom Saved Queries Using Query Favorites.....	16
InTouch HMI Scripting and Logic Guide.....	16
Printing Scripts	16
InTouch HMI Supplementary Components Guide.....	16
Updated Section: Saving and Printing a Tag Cross-Reference List	17
Updated Section: Printing Scripts.....	19
New Section: Printing Information about WindowMaker Objects	21
New Section: Printing Information about InTouch Windows	22
Printing Window Information from a Command Prompt.....	24
.CSV Format for Printing Windows	25
Syntax for Printing from a Command Prompt	25
New Section: Managing Application Settings for Vista and Windows 2008 Operating Systems.....	26
New Section: Adding Files for a Managed InTouch Application.....	27
New Section: Language Switching for a Managed InTouch Application.....	27

InTouch HMI Documentation Addendum

This addendum applies to the InTouch HMI 10.0 documentation.

Summary of Documentation Changes

This section describes the corrections and/or additions to the InTouch HMI documentation.

InTouch HMI Installation Help

The following are corrections and additions to the InTouch HMI Installation Help topics.

InTouch HMI Software Installation

Location:

Install-InTouch.chm: "InTouch HMI Software Installation" topic

Correction:

Remove this information:

- Install InTouch for Terminal Services.

The steps to install InTouch for Terminal Services are the same as a standard InTouch software installation, but the appearance of some dialog boxes is different.

Location:

Install-InTouch.chm: "Before You Install InTouch HMI Software" topic

Correction:

Add the following as the first bullet:

- Install Prerequisite Software.

The InTouch installation program analyzes your computer and lists any prerequisite software that needs to be installed before you can continue with the InTouch installation. For information on required software, see the InTouch ReadMe file.

The InTouch installation program can install some of the prerequisite software for you. This software is located on the same CD-ROM from which you are installing InTouch.

For other prerequisite software, you'll need to exit the InTouch installation, install the prerequisite(s) manually, and then restart the InTouch installation.

You may need to restart the computer after installing prerequisite software.

Correction:

Remove this information:

- The InTouch HMI requires Microsoft .NET Framework 2.0 or .NET Framework 3.0, which are both at version CLR 2.0.50727.

The InTouch installation program stops and shows a dialog box if Microsoft .NET Framework version 2.0 or 3.0 is not installed on the computer where the installation CD is located. You must select one of the following options from the dialog box:

- Click **OK** to install Microsoft .NET Framework 2.0 and proceed with the InTouch software installation.
- Click **Skip** to temporarily exit from the installation procedure and manually install .NET Framework. After installing .NET Framework, you return to the InTouch installation procedure.
- Click **Cancel** to exit from the InTouch installation procedure.

Correction:

Add this information:

- Microsoft .NET Framework 3.5

Microsoft .NET Framework 3.5 must be installed on every computer that hosts an InTouch version 10.1 component. The InTouch installation program stops if .NET Framework 3.5 is not installed on the target computer. A dialog box appears requesting that you install .NET Framework 3.5.

- Click **Install Prerequisites**, to install the .NET Framework 3.5 program.
- Click **Close** to exit from the InTouch installation procedure.

Location:

Install-InTouch.chm: "InTouch HMI Software Installation" topic

Correction:

Add the following topic after

"Installing the InTouch HMI Software":

Installing the Terminal Server

You can install Terminal Server for use with the InTouch HMI.

To Install the Terminal Server

- 1 Navigate to the **Windows Control Panel**.
- 2 Double-click **Add or Remove Programs**.
- 3 On the left, click **Add/Remove Windows Components**. The **Windows Components Wizard** dialog appears.
- 4 Scroll down and locate the "Terminal Services" option.
- 5 In the Components list, select the "Terminal Server" option. A "Configuration Warning" message appears.
- 6 Click **Yes** to confirm the installation.
- 7 Click **Next**. The **Windows Components Wizard** appears.
- 8 Select the license option, and click **Next**.
- 9 Select the licensing mode, and click **Next**.
- 10 The installation starts. When the installation completes, restart the system.

InTouch HMI Concepts and Capabilities Guide

The following are corrections and additions to the *InTouch HMI Concepts and Capabilities Guide* and Help topics.

InTouch Basic Objects

Location:

ITConcepts.pdf: "InTouch Basic Objects" section, page 39

WM.chm: "InTouch Basic Objects" topic

Existing documentation:

Graphic label reads "ArchestrA Tools Panel Graphic Primitives"

Correction:

Label should read "ArchestrA Tools Panel Graphic Elements"

Exporting and Importing InTouch Tags

Location:

ITConcepts.pdf: "Exporting and Importing InTouch Tags" section, page 66

WM.chm: "Exporting and Importing InTouch Tags" topic

Existing documentation:

You can use any application that supports the .csv file format to add, modify, or delete tags.

Correction:

You can use any application that supports the .csv file format, to add, modify, or delete tags in the import file.

InTouch HMI Application Management and Extension Guide

The following are corrections and additions to the *InTouch HMI Application Management and Extension Guide* and Help topics.

Publishing a Stand-alone InTouch Application

Location:

ITAppManagement.pdf: "Publishing a Stand-alone InTouch Application" section, page 27

WM.chm: "Publishing a Stand-alone InTouch Application" topic

Existing documentation:

To publish an InTouch application

Correction:

To publish a stand-alone InTouch application

Managing Application Settings for Vista and Windows 2008 Operating Systems**Location:**

Add to the ITAppManagement.pdf after “Converting Legacy Alarm Displays” on page 31 and to the WM.chm.

Correction:

New section. For the text, see New Section: Printing Information about WindowMaker Objects on page 21.

Using Operating System-Based Security**Location:**

ITAppManagement.pdf: "Using Operating System-Based Security" section, page 142

WM.chm: "Using Operating System-Based Security" topic

Correction:

Add the following paragraphs to the end of the section.

Some InTouch operations require administrative permissions. If a Windows Vista or Windows 2008 standard user attempts to perform an administrative operation, an error will be logged to the logger. For the Vista or Windows 2008 operating system, you must define roles for InTouch users who perform operations that require administrative permissions.

Note Vista and Windows 2008 operating systems restrict users from accessing directories of other users. When logging in as an administrator, a warning message appears saying "you do not have permission to access this folder." However, clicking the continue button then adds the permission and the folder can be opened.

Managing InTouch Applications

Location:

ITAppManagement.pdf: "Managing InTouch Applications" section, page 13

WM.chm: "Managing InTouch Applications" topic

Correction:

Add the following paragraph to the end of the section.

For Vista and Windows 2008 operating systems, a standard user can only find applications, start WindowViewer, and see the properties of an application. All other actions require administrative permissions.

InTouch HMI Data Management Guide

The following are corrections and additions to the *InTouch HMI Data Management Guide* and Help topics.

Saving and Printing a Tag Cross-Reference List

Location:

ITDataManagement.pdf: "Saving and Printing a Tag Cross-Reference List" section, page 169-171

WM.chm: "Saving and Printing a Tag Cross-Reference List" topic

Correction:

Updated to include new options for:

- Printing graphical object information for windows
- Specifying windows to print using a .csv file

For the updated version of the section, see Updated Section: Saving and Printing a Tag Cross-Reference List on page 17.

Memory Tag Properties

Location:

ITDataManagement.pdf: "Memory Tag Properties" section, page 22

WM.chm: "Memory Tag Properties" topic

Correction:

In the Priority row of the table, add a bullet in the Message column.

I/O Tag Properties

Location:

ITDataManagement.pdf: "I/O Tag Properties" section, pages 23-24

WM.chm: "I/O Tag Properties" topic

Corrections:

In the Min Value row, add bullets in the Integer and Real columns.

In the Priority row, add a bullet in the Message column.

In the Square Root Conversion row, add bullets in the Integer and Real columns.

Understanding InTouch Remote Reference Limits

Location:

ITDataManagement.pdf: "Understanding InTouch Remote Reference Limits" section, page 259

WM.chm: "Understanding InTouch Remote Reference Limits" topic

Existing documentation:

You can set up InTouch Access Names with primary and secondary target addresses. The secondary address usually serves as a backup or failover tag source while an application is running. When your application switches between the primary and secondary tag source of an Access Name, its sticky remote reference tag count does not increment despite the change in the addressing of the Access Name.

Correction:

Replace the existing paragraph with the following:

When fail-over to the secondary tag source occurs, the application can access the same items from the secondary source without increasing the licensed tag count. After failover, accessing new items from the secondary tag source increases the tag count. These items are accessible after fail-back to the primary tag source.

After the tag count reaches the licensed maximum, no further items can be activated regardless of whether they are accessed from the primary or secondary tag source.

Understanding InTouch Remote Reference Limits

Location:

ITDataManagement.pdf: "Understanding InTouch Remote Reference Limits" section, page 258

WM.chm: "Understanding InTouch Remote Reference Limits" topic

Existing documentation:

The InTouch 60K license does not use sticky tag counts that impose limits on the number of dynamic remote tag references. This allows an application to dynamically access more than 60K tags during the period the application is running. The tag use count for dynamic remote references fluctuates up and down as windows with remote references are opened and closed. But, the application can never have more simultaneously active tags than the implementation limit of the run-time tag database.

Correction:

Add this paragraph immediately after the fourth paragraph on page 258.

Dynamic reference tag counts only fluctuate up and down when WindowViewer uses disk storage to save the contents of a running application. If the WindowViewer **Always load from disk** configuration option is not selected, then the count assigned to the **No. of remote tags that can be activated without running out of remote tag handles** does not necessarily decrease after closing a window containing remote tag references.

InTouch HMI Visualization Guide

The following are corrections and additions to the *InTouch HMI Visualization Guide* and Help topics.

Printing Information about WindowMaker Objects

Location:

Add to the ITVisualization.pdf after "Substituting Object Text" on page 57 and to the WM.chm.

Correction:

New section. For the text, see New Section: Printing Information about WindowMaker Objects on page 21.

Printing Information about InTouch Windows

Location:

Add to the ITVisualization.pdf after “Deleting Windows” on page 34 and to the WM.chm.

Correction:

New section. For the text, see New Section: Printing Information about InTouch Windows on page 22.

Selecting Tags or Attributes

Location:

ITVisualization.pdf: "Selecting Tags or Attributes" section, pages 97-101

WM.chm: "Selecting Tags or Attributes" topic

Correction:

Change all instances of "Attribute Browser" to "Galaxy Browser."

InTouch HMI SmartSymbols Guide

There are no corrections and additions to the *InTouch HMI SmartSymbols Guide* and Help topics.

InTouch HMI and ArcestrA Integration Guide

The following are corrections to and additions the *InTouch HMI and ArcestrA Integration Guide* and Help topics.

Published InTouch Applications

Location:

ITAAIntegration.pdf: "Published InTouch Applications" section, page 13

WM.chm: "Published InTouch Applications" topic

Existing documentation:

A managed application appears in InTouch Application Manager as Published.

Correction:

A published application appears in InTouch Application Manager as Published.

Adding Files for a Managed InTouch Application

Location:

Add to the ITAAIntegration.pdf after “Retaining Tag Value and Parameters” on page 42 and to the WM.chm.

Correction:

New section. For the text, see New Section: Adding Files for a Managed InTouch Application on page 27.

Language Switching for a Managed InTouch Application

Location:

Add to the ITAAIntegration.pdf after “Retaining Tag Value and Parameters” on page 42 and to the WM.chm.

Correction:

New section. For the text, see New Section: Language Switching for a Managed InTouch Application on page 27.

InTouch HMI Alarms and Events Guide

The following are corrections and additions to the *InTouch HMI Alarms and Events Guide* and Help topics.

Example Alarm Queries

Location:

ITAlarmsAndEvents.pdf: "Example Alarm Queries" section, page 55

WM.chm: "Example Alarm Queries" topic

Existing documentation:

For example:

```
\\ProdSvr\InTouch!\$System
```

Use the following syntax for querying alarms from a Galaxy. This syntax gets alarms from a specific attribute of an object in a specific area on a specific computer.

```
\\nodeName\Galaxy!Area.Object.Attribute
```

The following syntax gets all alarms from a specific area:

```
\\Galaxy!Area
```

The following syntax gets alarms from two areas:

```
\\Galaxy!Area1 \\Galaxy!Area2
```

The following syntax gets all alarms from the Platform on computer node (by default):

```
\\NodeName\Galaxy
```

You can also use a wildcard. The following syntax gets all alarms from Area1, Area2, Area3, and so on:

```
\\Galaxy!Area*
```

The following syntax gets all alarms from all objects starting with the characters "Tank" in the area named "Area":

```
\\Galaxy!Area.Tank*
```

Correction:

For example, on a node called MyNode1:

```
\\MyNode1\InTouch!$System
```

Use the following syntax for querying alarms from a Galaxy with the **Register using "Galaxy_<Galaxy name>" instead of "Galaxy"** checkbox selected. This syntax gets alarms from a specific alarm name of an object in a specific area on a specific computer. The alarm name may be an attribute name or an alarm primitive name. Galaxy names are displayed in the alarm window's Provider column.

```
\\NodeName\Galaxy_GalaxyName!AreaName!ObjectName  
.AlarmName
```

The following syntax gets all alarms from a specific area:

```
\\Galaxy_GalaxyName!AreaName
```

The following syntax gets alarms from two areas:

```
\\Galaxy_GalaxyName!Area1 \\Galaxy_GalaxyName!Area2
```

The following syntax gets all alarms in the specified Area from the Platform on the specified computer node (by default):

```
\\NodeName\Galaxy_GalaxyName!AreaName
```

You can also use single wildcard to match alarm names within a specified area. The following syntax gets all alarms from all objects starting with the characters "Tank" in the "AreaName" area:

```
\\Galaxy_GalaxyName!AreaName!Tank*
```

The following syntax gets all alarms named "Hi" from all objects in the "AreaName" area:

```
\\Galaxy_GalaxyName!AreaName!*.Hi
```

Creating Custom Saved Queries Using Query Favorites

Location:

ITAlarmsAndEvents.pdf: "Creating Custom Saved Queries Using Query Favorites" section, page 70 and 219

WM.chm: "Creating Custom Saved Queries Using Query Favorites" topics

Correction:

Add the following text to the introductory paragraphs.

If WindowViewer will be running on Vista or Windows 2008 operating systems, make sure that you put the query favorites file in a folder that is accessible to Vista or Windows 2008 standard users. If WindowViewer will always run with the same user account, you can use:

C:\Users\<<username>\AppData\Local\

If different users will run WindowViewer, you can use:

C:\Users\Public\Documents\

InTouch HMI Scripting and Logic Guide

The following are corrections and additions to the *InTouch HMI Scripting and Logic Guide* and Help topics.

Printing Scripts

Location:

ITScriptsAndLogic.pdf: "Printing Scripts" section, page 21

WM.chm: "Printing Scripts" topic

Correction:

Updated to include new option for specifying windows to print using a .csv file.

For the updated version of the section, see Updated Section: Printing Scripts on page 19.

InTouch HMI Supplementary Components Guide

There are no corrections and additions to the *InTouch HMI Supplementary Components Guide* and Help topics.

Updated Section: Saving and Printing a Tag Cross-Reference List

You can save your cross reference tag listing to a file and view it with any application that supports the .csv file format.

The cross reference tag listing file lists all tags by name, how they are used in the application, and the name of the window where they are located. You can open the cross reference tag listing file with Excel or any other program that supports .csv files.

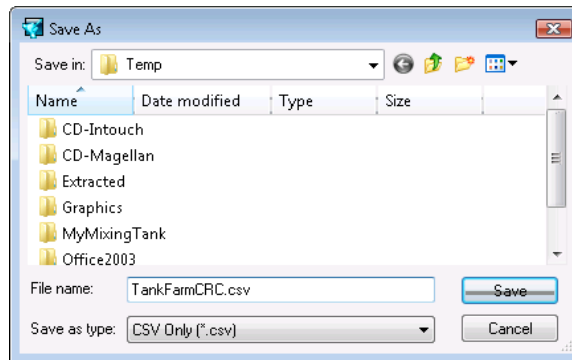
Tagname	Usage	Location
\$AccessLevel	none	
\$AlarmPrinterNoPaper	none	
\$AlarmPrinterOffline	none	
\$ApplicationChanged	none	
\$ApplicationVersion	none	
\$ChangePassword	none	
\$ConfigureUsers	none	
\$Date	none	

You can also print the contents of the Tagname Dictionary. Printing the contents of the Tagname Dictionary shows you database entries used in the application. You can specify the level of detail you want to see.

You can send this report to the printer or save it to a file.

To save a cross-reference file

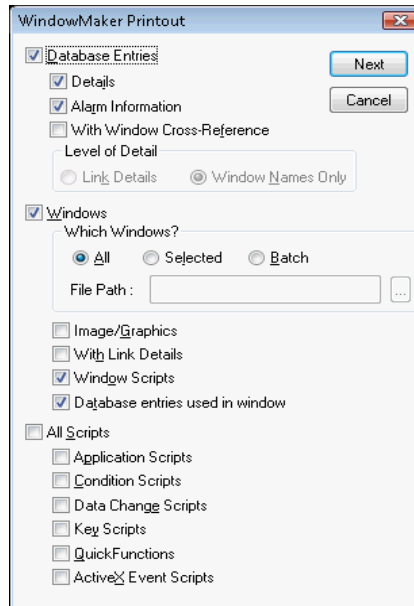
- 1 In the InTouch Cross Reference Utility dialog box, click **Save As**. The **Save As** dialog box appears.



- 2 Specify a name and location for the file.
- 3 Click **Save**. The tag usage file is saved in the specified folder.

To print the contents of the Tagname Dictionary

- 1 Open an InTouch application in WindowMaker.
- 2 On the WindowMaker **File** menu, click **Print**. The **WindowMaker Printout** dialog box appears.




- 3 Select **Database Entries** if you want to print tag information from the Tagname Dictionary.
If you select **Database Entries**, the following options become active:
 - Select **Details** to include the details of the tags in your report.
 - Select **Alarm Information** to include the tag alarm information in your report.
 - Select **With Window Cross-Reference** to print all Tagname Dictionary entries with window cross-references. If you select this option, specify the level of detail to print.
Link Details prints the location and animation link details where the tag is used.
Window Names Only prints only the name of the cross-referenced windows.
- 4 Click **Next**. The **Select Output Destination** dialog box appears.
- 5 Select the option to print the contents of the Tagname Dictionary or send the output to a text or .html file.
- 6 Click **Print**.

Updated Section: Printing Scripts

You can print scripts individually from the Script Editor, or you can print all scripts of a specific type using the print feature in WindowMaker.

To print an individual script

- 1 Open the script in the Script Editor. See *Opening a Script for Editing* on page 16.
-  2 Click the **Print** button in the toolbar. The script is printed to the Windows default printer.

To print all scripts of a specific type

- 1 On the **File** menu in WindowMaker, click **Print**. The **WindowMaker Printout** dialog box appears.
- 2 To print window scripts, do the following:
 - a Select **Windows**.
 - b Select the windows to print:

All prints the information for all windows in the application.

Selected prints only the information for specific windows. The **Windows to Print** dialog box appears. Select the windows in your application you want to print and click **OK**.

Batch prints only the information for windows specified in a .csv file. For details on the .csv format, see **.CSV Format for Printing Windows** on page 25.
 - c Select **Window Scripts** to print the scripts associated with the windows.
- 3 To print other types of scripts, select the appropriate check boxes. To print all scripts, click **All Scripts**.
- 4 Click **Next**. The **Select Output Destination** dialog box appears.
- 5 Do one of the following
 - Click **Send output to Printer**.
 - Click **Send output to Text File**.
- 6 Click the **Browse** button to select a printer, or to find a file.
- 7 Click **Print**.

To print all scripts

- 1 Select **All Scripts** to print all scripts used in the application.

You can restrict printing to only selected types of scripts by clearing the **All Scripts** check box. Then, select the check box for each type of script that you want to print.
- 2 Click **Next**. The **Select Output Destination** dialog box appears.
- 3 Select the option to print the contents of the Tagname Dictionary or send the output to a text or .html file.
- 4 Click **Print**.

New Section: Printing Information about WindowMaker Objects

You can print information about the InTouch graphical objects that you have placed in an application window. InTouch graphical objects include simple objects, such as lines, buttons, and text, as well as complex objects, such as cells, ActiveX controls, SmartSymbols, and Archestra Symbols.

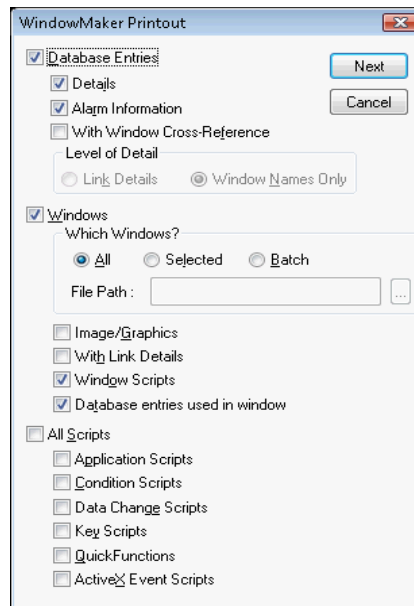
You can print details for graphical objects to either a printer or an .html file. An .html file is created for each window. The .html file contains:

- A picture of the window as a referenced .png file.
- A listing of details about each graphical object in the window.

If you print graphical object details for multiple windows, a summary .html file is created that has links to the window-specific .html files.

To print information about WindowMaker objects

- 1 Open an InTouch application in WindowMaker.
- 2 On the WindowMaker File menu, click Print. The WindowMaker Printout dialog box appears.



- 3 Select the Windows check box.

- 4 Specify the windows to print:
 - **All** prints the images/graphics for all windows in the application.
 - **Selected** prints only the images/graphics for specific windows. The **Windows to Print** dialog box appears. Select the windows in your application you want to print and click **OK**.
 - **Batch** prints only the information for windows specified in a .csv file. For details on the .csv format, see **.CSV Format for Printing Windows** on page 25.
- 5 Select the **Image/Graphics** check box.
- 6 Click **Next**. The **Select Output Destination** dialog box appears.
- 7 Do one of the following
 - Click **Send output to Printer** to print the information.
 - Click **Send output to HTML File** to create a summary .html file and a single .html file and .png file for each window you specified. If .html and .png files exist, they are automatically overwritten.
- 8 Click **Print**.

New Section: Printing Information about InTouch Windows

You can print the following information for InTouch windows:

- Details for the graphical objects placed in a window. For example, the window location for all types of objects, the font used for a text object, the custom properties defined for an ArcestrA Symbol, and so on.
- Details about the animation links used in a window.
- Scripts associated with a window.
- Tags used in a window.

You can print details for graphical objects to either a printer or an .html file. An .html file is created for each window. The .html file contains:

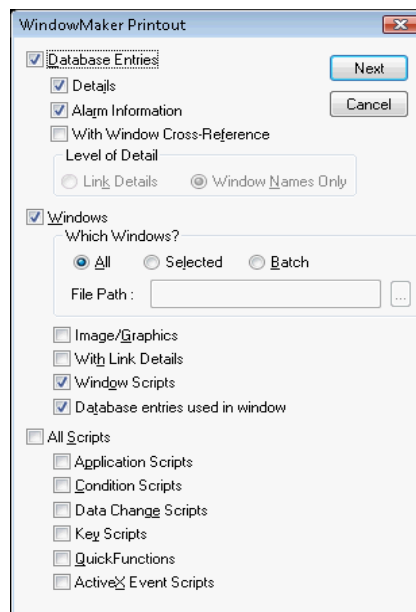
- A picture of the window as a referenced .png file.
- A listing of details about each graphical object in the window.

If you print graphical object details for multiple windows, a summary .html file is created that has links to the window-specific .html files.

For animation link, script, or tag details, you can print to either a printer or a .txt file.

To print information about InTouch Windows

- 1 Open an InTouch application in WindowMaker.
- 2 On the File menu, click Print. The WindowMaker Printout dialog box appears.



- 3 Select Windows.
- 4 Select the windows to print:
 - **All** prints the information for all windows in the application.
 - **Selected** prints only the information for specific windows. The **Windows to Print** dialog box appears. Select the windows in your application you want to print and click **OK**.
 - **Batch** prints only the information for windows specified in a .csv file. For details on the .csv format, see **.CSV Format for Printing Windows** on page 25.

- 5 Select what you want printed for the selected windows:
 - **Image/Graphics** prints the information about all of the graphic objects placed in the windows.
 - **With Link Details** prints the link details for the windows.
 - **Window Scripts** prints the scripts associated with the windows.
 - **Database entries used in window** prints the tags used in the windows.
- 6 Click **Next**. The **Select Output Destination** dialog box appears.
- 7 Do one of the following
 - Click **Send output to Printer** to print the information.
 - Click **Send output to Text File** to create a single .txt file.
 - Click **Send output to HTML File** to create a summary .html file and a single .html file and .png file for each window you specified. If .html and .png files exist, they are automatically overwritten.
- 8 Click **Print**.

Printing Window Information from a Command Prompt

You can print window information from a command prompt. To do this, you create a .csv file that contains the window names and then reference the .csv file in the print command.

When the print command runs, WindowMaker automatically opens the default InTouch application, performs the print operation, and then closes. Printing from a command prompt only works for stand-alone InTouch applications.

To print window information from a command prompt

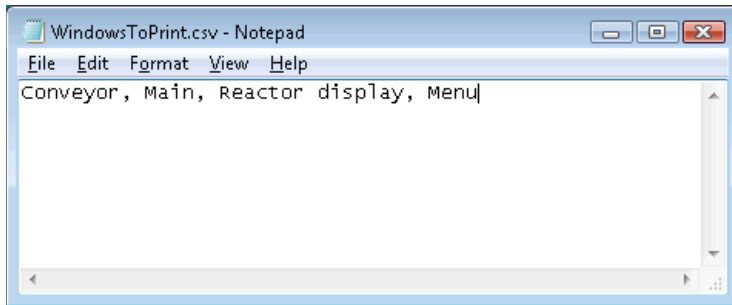
- 1 Create the .csv file that contains the names of the windows to print. For details on the .csv format, see **.CSV Format for Printing Windows** on page 25.
- 2 Exit WindowMaker and close the .csv file.
- 3 Open a command prompt.
- 4 Type the command to print the information. For details on the command syntax, see **Syntax for Printing from a Command Prompt** on page 25.
- 5 Press the Enter key. WindowMaker starts up and prints the information.

.CSV Format for Printing Windows

Create a single row in a .csv file and include each window name separated by a comma:

Window1,Window2,Window3,WindowN

For example:



If you use Microsoft Excel to create the file, there should be one row, with the name of each window in each column cell of the row.

You cannot use the backslash character (\) in a window name.

You must use a comma and not any other separator.

Syntax for Printing from a Command Prompt

The command syntax is:

```
"<WindowMaker path name>" COMMANDFILE="<CSV file>" ALL OUTPUTTARGET=<target name>
```

where:

- <WindowMaker path name> is the path to the WindowMaker application (WM.exe).
- <CSV file> is the name of the .csv file that specifies the windows to print.
- <target name> is output location, either to a printer or .html file.
- ALL is the command to print all link, database entry, and script information. If you do not include the ALL command, only graphical object information prints.

In this example, all link, database entry, and script information is sent to the default printer:

```
"C:\Program Files\Wonderware\InTouch\wm.exe"
COMMANDFILE="D:\print.csv" ALL OUTPUTTARGET =
PRINTER
```

In this example, graphical object information is sent to an .html file:

```
"C:\Program Files\Wonderware\InTouch\wm.exe"  
COMMANDFILE="D:\print.csv" OUTPUTTARGET =  
HTML <DEMOAPP.html>
```

New Section: Managing Application Settings for Vista and Windows 2008 Operating Systems

InTouch application settings, such as the application path, are stored in the Win.ini file. The Win.ini file is located in different folders, based on the operating system:

- Operating systems other than Vista and Windows 2008:
C:\Windows
- Terminal Services: C:\Documents and Settings\\WINDOWS
- Vista and Windows 2008 operating systems:
C:\Users\\AppData\Local\Wonderware

On Vista and Windows 2008 operating systems, WindowMaker runs as an administrative user and WindowViewer can run as an administrative or standard user. The standard user cannot access the Win.ini directory of the administrative user profile. Therefore, as the application developer, you need to copy the common Win.ini attributes to the standard user's Win.ini profile when you develop the application. This ensures that all the attributes that are set under the administrative user are also available when WindowViewer is started by the standard user. You must copy the attributes each time you make changes to the common Win.ini attributes.

New Section: Adding Files for a Managed InTouch Application

Using WindowMaker, you can add additional files to a managed InTouch application so that they are deployed and available at run time.

To add files to a managed InTouch application

- 1 Open the managed InTouch application in WindowMaker.
- 2 On the **File** menu, click **Open Application Folder**. The standard Windows Explorer window appears, showing the InTouch application folder on the Galaxy Repository node.
- 3 Add new files and folders to the InTouch application folder.
- 4 Close the Explorer window.

New Section: Language Switching for a Managed InTouch Application

For managed InTouch applications, certain language switching functionality is handled by the ArcestrA IDE instead of the InTouch HMI.

Use the ArcestrA IDE to:

- Export and import graphic text for translation.
- Configure the language used by the managed application.

For more information, see the IDE documentation.

Alarm information is exported from within the InTouch HMI.

