

Galaxy Database Manager User's Guide

Invensys Systems, Inc.

Revision A

Last Revision: 6/25/07



Copyright

All rights reserved. No part of this documentation shall be reproduced, stored in a retrieval system, or transmitted by any means, electronic, mechanical, photocopying, recording, or otherwise, without the prior written permission of Invensys Systems, Inc. No copyright or patent liability is assumed with respect to the use of the information contained herein. Although every precaution has been taken in the preparation of this documentation, the publisher and the author assume no responsibility for errors or omissions. Neither is any liability assumed for damages resulting from the use of the information contained herein.

The information in this documentation is subject to change without notice and does not represent a commitment on the part of Invensys Systems, Inc. The software described in this documentation is furnished under a license or nondisclosure agreement. This software may be used or copied only in accordance with the terms of these agreements.

Invensys Systems, Inc.
26561 Rancho Parkway South
Lake Forest, CA 92630 U.S.A.
(949) 727-3200

<http://www.wonderware.com>

For comments or suggestions about the product documentation, send an e-mail message to productdocs@wonderware.com.

Trademarks

All terms mentioned in this documentation that are known to be trademarks or service marks have been appropriately capitalized. Invensys Systems, Inc. cannot attest to the accuracy of this information. Use of a term in this documentation should not be regarded as affecting the validity of any trademark or service mark.

Alarm Logger, ActiveFactory, ArcestrA, Avantis, DBDump, DBLoad, DT Analyst, FactoryFocus, FactoryOffice, FactorySuite, FactorySuite A², InBatch, InControl, IndustrialRAD, IndustrialSQL Server, InTouch, MaintenanceSuite, MuniSuite, QI Analyst, SCADAAlarm, SCADASuite, SuiteLink, SuiteVoyager, WindowMaker, WindowViewer, Wonderware, and Wonderware Logger are trademarks of Invensys plc, its subsidiaries and affiliates. All other brands may be trademarks of their respective owners.

Contents

	Welcome.....	5
	Documentation Conventions.....	5
	Technical Support	6
Chapter 1	Overview	7
	System Management Console.....	7
	Starting the Galaxy Database Manager	8
	Navigating in the Galaxy Manager.....	8
	Console Tree	8
	Details Pane.....	9
Chapter 2	Using the Galaxy Database Manager	11
	Backing Up a Galaxy.....	12
	Restoring a Galaxy	13
	Determining the Galaxy Database Manager Version	15
	Index	17

Welcome

You can use the Galaxy Database Manager to save and restore Galaxy data. The Galaxy Database Manager is part of the ArcestrA System Management Console suite of utilities.

You can view this document online or you can print it, in part or whole, by using the Adobe Acrobat Reader's print facility.

Documentation Conventions

This documentation uses the following conventions:

Convention	Used for
Initial Capitals	Paths and file names.
Bold	Menus, commands, dialog box names, and dialog box options.
Monospace	Code samples and display text.

Technical Support

Wonderware Technical Support offers a variety of support options to answer any questions on Wonderware products and their implementation.

Before you contact Technical Support, refer to the relevant section(s) in this documentation for a possible solution to the problem. If you need to contact technical support for help, have the following information ready:

- The type and version of the operating system you are using.
- Details of how to recreate the problem.
- The exact wording of the error messages you saw.
- Any relevant output listing from the Log Viewer or any other diagnostic applications.
- Details of what you did to try to solve the problem(s) and your results.
- If known, the Wonderware Technical Support case number assigned to your problem, if this is an ongoing problem.

Chapter 1

Overview

The Galaxy Database Manager is an ArcestrA utility you can use to manage your Galaxies. Use it to back up your Galaxies so that if a Galaxy becomes corrupted, you can restore the Galaxy. You can also use a backup to reproduce a Galaxy on another computer.

The Galaxy Database Manager is automatically installed on every Galaxy Repository node.

System Management Console

The Galaxy Database Manager is part of the ArcestrA System Management Console (SMC) suite of utilities you can use to manage the ArcestrA environment. The SMC is a snap-in to the Microsoft Management Console (MMC).

The MMC and each SMC utility provides its own documentation. For more information, click **Help** on the **Action** menu. The first Help book shown (Microsoft Management Console) provides information about the MMC utility in general. Each SMC utility is then represented by a Help book below the MMC book.

This document describes the functionality and user interface of the Galaxy Database Manager. It describes common features of the MMC only if required to explain Galaxy Database Manager functionality.

Note Aspects of the Galaxy Database Manager user interface may look different when installed on different versions of Microsoft® Windows®. Also, the version of MMC installed on your computer affects the content and behavior of the user interface.

Starting the Galaxy Database Manager

To start the Galaxy Database Manager utility

- 1 Click **Start**.
- 2 Click **Programs**.
- 3 Select **Wonderware**.
- 4 Select **System Management Console**.

The Galaxy Database Manager is listed in the SMC's console tree hierarchy.

Note You must have Administrator privileges on the Galaxy Repository computer to use the Galaxy Database Manager. You may need additional privileges if security for the Galaxy database is set up through Microsoft® SQL Server™. See SQL Server documentation for further instructions.

This Galaxy Database Manager utility provides a view of all Galaxies in your Galaxy Repository. Select the Galaxy Database Manager in the SMC hierarchy to see a list of Galaxies in the details pane of the MMC.

Navigating in the Galaxy Manager

From the SMC console, you can access drop-down menus, context menus, and dialog boxes for backing up and restoring your Galaxies.

The contents of the title bar, menu bar, toolbar, and status bar are dynamic depending on which item is selected in the console tree or details pane. The contents of the details pane also change as you select different items in the console tree hierarchy.

The title bar shows the item selected in the console tree hierarchy. The status bar either shows the condition, if any, of the item selected in the console tree or provides a brief description of a highlighted command in a menu.

Console Tree

The console tree is a hierarchical structure beginning at the ArcestrA System Management Console (SMC) root. All SMC utilities are shown next in the hierarchy, including the Galaxy Database Manager. All Galaxies in your Galaxy Repository are shown on the next level of the hierarchy.

The contents of the details pane change as you select items in the console tree.

Details Pane

The details pane is composed of two main elements:

- **Column headings:** when Galaxy Database Manager is selected in the console tree, two columns are shown, **Node** and **Galaxy**. The **Node** column identifies which node a Galaxy resides on. The **Galaxy** column displays the Galaxy's name. Use this information when backing up and restoring Galaxies.
- **Data window:** shows Galaxy data.

The contents of the details pane change as you select items in the console tree. See *MMC Help* for information about managing column headings.

Chapter 2

Using the Galaxy Database Manager

You use the Galaxy Database Manager to back up and restore a Galaxy.

Backing up a Galaxy creates a single backup file (.cab extension) containing all the files, configuration data, and object deployment states required to recreate the Galaxy in an empty Galaxy Repository.

During the backup, no write operations are allowed to the Galaxy Repository. If write activity is occurring, you should back up at a later time.

Restoring a Galaxy uses the backup file to overwrite an existing Galaxy or to create the backed up Galaxy in a different Galaxy Repository. The restore process prompts you for confirmation before a Galaxy is overwritten.

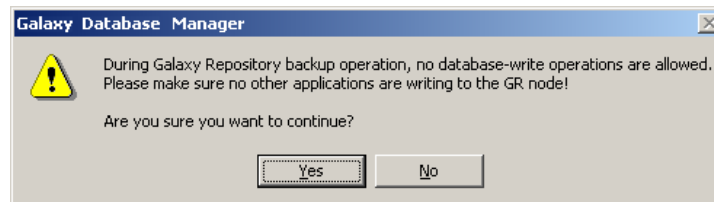
All objects should be undeployed before beginning to restore a Galaxy. During the restore, no clients can use the Galaxy Repository. If these conditions are not acceptable, you should restore at a later time.

Backing Up a Galaxy

The backup function of the Galaxy Database Manager archives all files and configuration data required to recreate the selected Galaxy in an empty Galaxy Repository.

To back up a Galaxy

- 1 In the console tree of the ArchedrA System Management Console, select Galaxy Database Manager. The details pane shows all Galaxies and the nodes they reside on.
- 2 In the details pane, select the Galaxy you want to back up.
- 3 On the **Action** menu, click **Backup**.
- 4 Read the warning message.



- 5 Click **Yes**.
- 6 In the **Save In** dialog box, enter the path and file name (.cab extension) of the backup file you want to create. Use the browse button to find a file or a location.
- 7 Click **Save**. To terminate the backup, click **Cancel**.
- 8 When the backup function is finished, click **Close**.

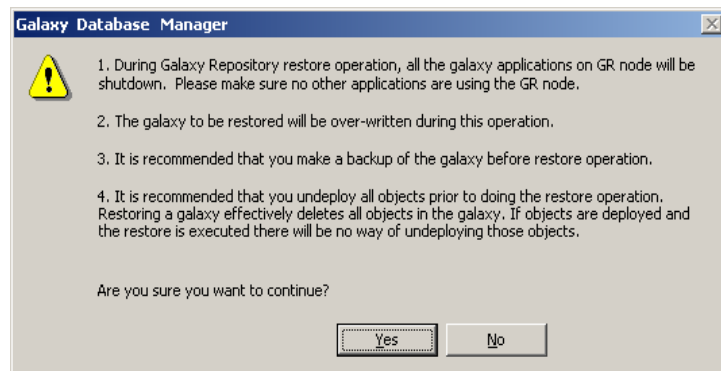
Restoring a Galaxy

You can choose a backup file to overwrite an existing, corrupted Galaxy or to reproduce a Galaxy in another Galaxy Repository.

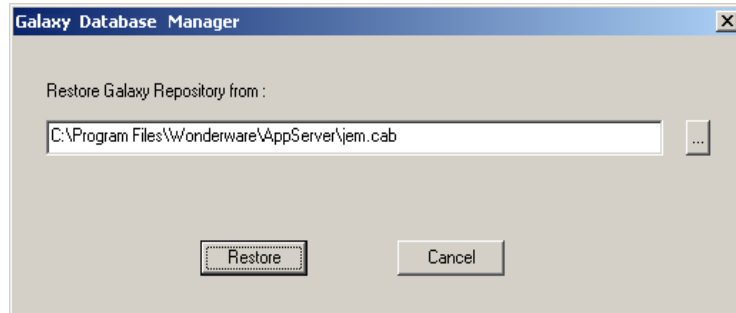
If you are reproducing a new Galaxy on another Galaxy Repository with the restore function, first use the ArcestrA IDE to create the new Galaxy in the target Galaxy Repository. The names of the new Galaxy you create in the IDE and the backed up Galaxy you use in the restore process must be the same. See the IDE documentation for more information about creating Galaxies.

To restore a corrupted Galaxy or to reproduce a Galaxy in another Galaxy Repository

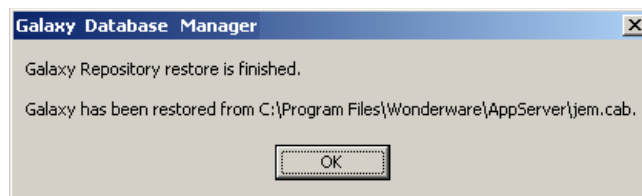
- 1 In the console tree of the System Management Console, click Galaxy Database Manager. The details pane shows all Galaxies and the nodes they reside on.
- 2 In the details pane, select the corrupted Galaxy you want to restore or the name of the Galaxy you want to reproduce.
- 3 On the **Action** menu, click **Restore**.
- 4 Read the warning messages. Click **Yes** to continue restoring and **No** to terminate the restore function.



- 5 Enter the path and file name (.cab extension) of the backup file you want to use. Either type the path and file name or use the browse button to explore for a file or location. The default path is the last folder used for a backup or restore.



- 6 To continue, click **Restore**. If you have an active client connected to the Galaxy Repository, a message appears. You are required to quit those client programs before restore can continue. To terminate the restore function, click **Cancel**.
- 7 When the restore function is finished, click **OK**.

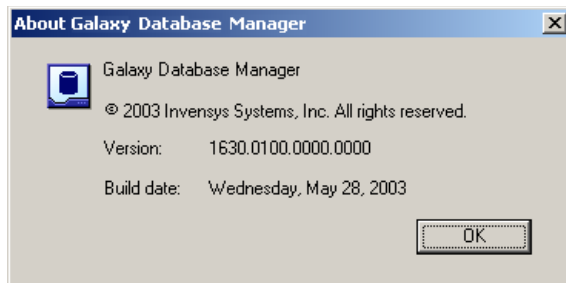


Determining the Galaxy Database Manager Version

You can view the version, copyright and other information about the utility.

To view Galaxy Database Manager information

- 1 Select Galaxy Database Manager in the Archedra System Management Console hierarchy.
- 2 On the **Action** menu, click Galaxy Database Manager.



- 3 Click **OK** when you are done viewing the information.

Index

A

ArchestrA 7

B

back 7

back up 7

backing up a galaxy 12

D

Details pane 9

G

Galaxy 7, 8

M

Microsoft 7

R

restore 7

restoring a galaxy 13

V

version 15

W

Welcome 5

