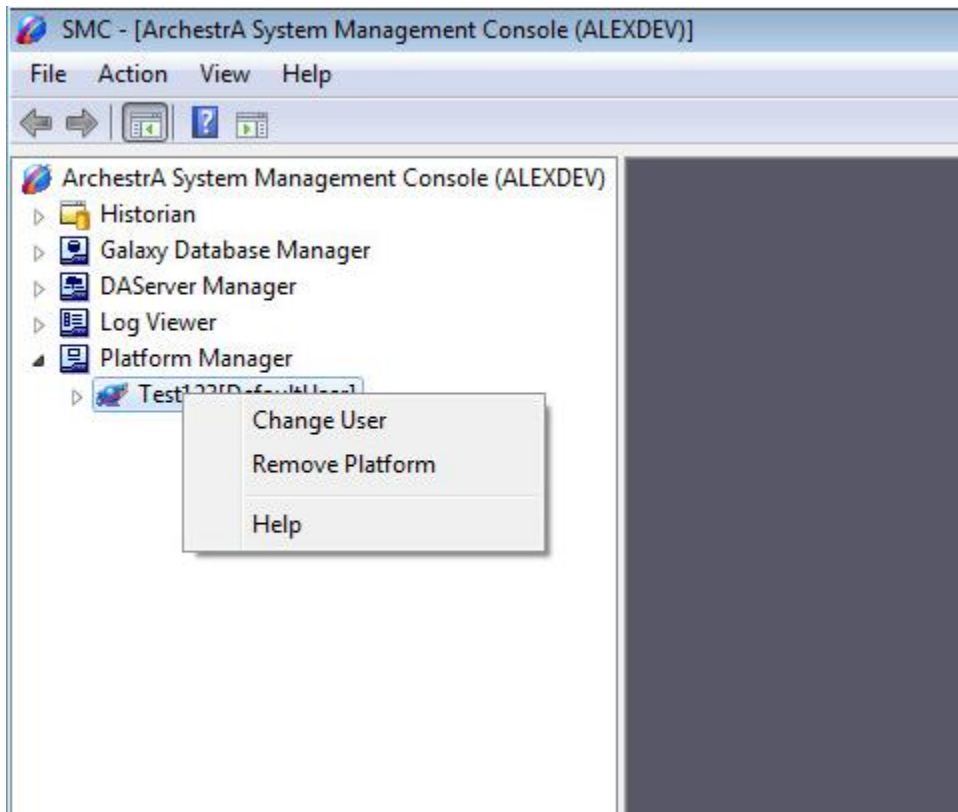


Don't Use Platform Killer

Platform killer is an unsupported tool. Most people believe the tool is supported because it was so widely used, even recommend (out of necessity) by support people. It was written during a version of System Platform with some very difficult problems removing platforms making Platform Killer a necessity. The necessity has been eliminated in System Platform 2012, platforms remove much cleaner. There is a supported reliable method for removing a platform. It is done through the system management console. Here are the steps.

- 1.) Open SMC – Navigate to Start | All Programs | Wonderware | System Management Console
- 2.) Navigate to Galaxy name – In the left pane find platform manager and expand it. Click on the name of your galaxy.
- 3.) Remove Platform – Right click on the name of your plant then select remove platform from the context menu. This removes the platform from the local computer and only the local computer, no other platforms will be removed. Your screen will look like the screenshot below at this step.



Please remember to use this supported method. Platform Killer shouldn't be used for System Platform 2012 and above. Platform Killer can create problems requiring a system to be reformatted on 2012 and above. Even for versions before 2012 it is better to try the supported method first then try Platform Killer.