

## Serial to Ethernet Adapter

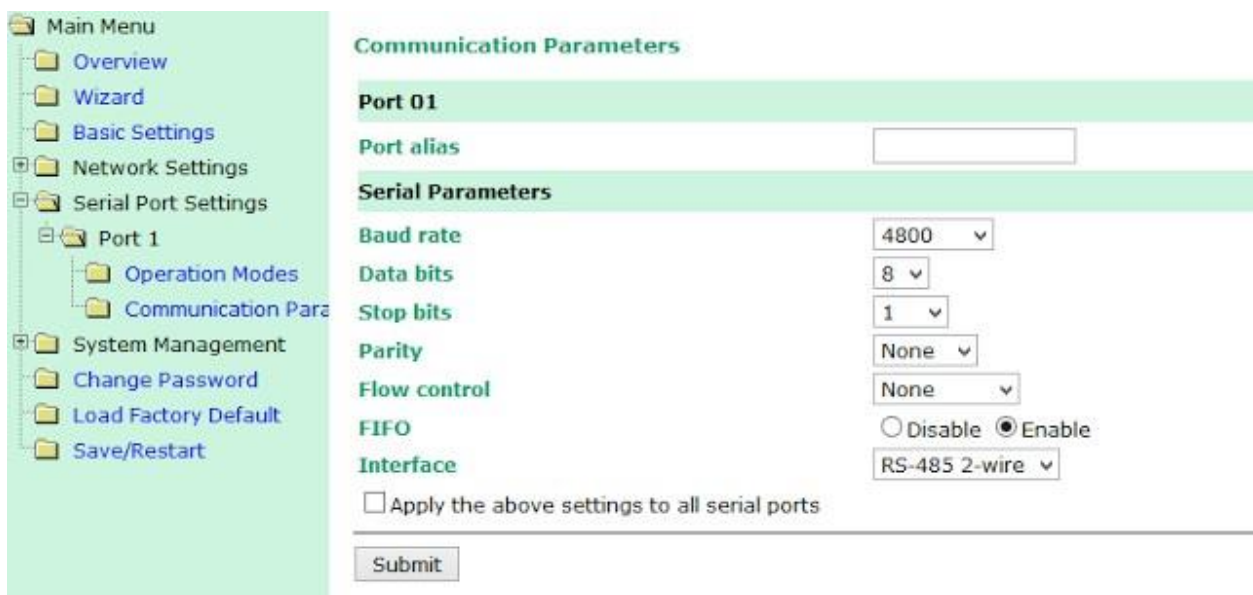
Many devices today still utilize serial ports for their primary interface. As Ethernet becomes more prevalent, it makes more sense to access legacy serial devices via this newer copper medium instead of expensive replacement. Moxa features many serial device servers which give Ethernet network connectivity to RS-232, 422, and 485 serial networks. Here's how to setup a Moxa NPort W2150.



The screenshot shows the web interface for the Moxa NPort W2150 Series. The browser address bar shows the IP address 192.168.100.223. The Moxa logo and website URL are at the top. A left-hand navigation menu includes options like Overview, Wizard, Basic Settings, Network Settings, Serial Port Settings, System Management, Change Password, Load Factory Default, and Save/Restart. The main content area displays a welcome message and a table of system information.

Welcome to NPort W2150 Series	
Wireless Serial Device Server	
Model name	NPort W2150
Serial number	2
Firmware version	1.6 Build 08051311
Ethernet IP address	192.168.100.223
Ethernet MAC address	00:90:E8:0D:A1:CF
WLAN IP address	192.168.127.254
WLAN MAC address	00:60:B3:2A:8C:7E
SSID	default
WLAN mode	Infrastructure Mode
WEP mode	Disable
Serial port 1	TCP Server Mode, 4800, None, 8, 1, None
Active network port	Ethernet

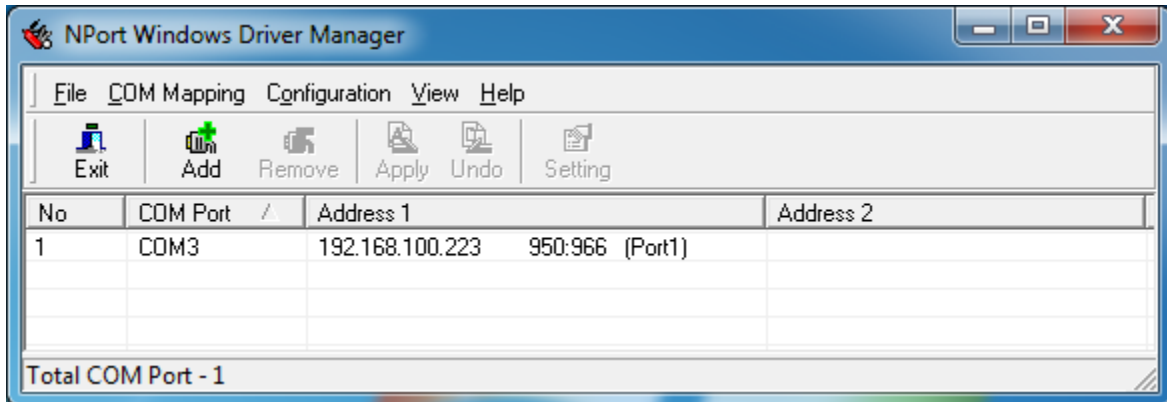
Out of the box, this unit has a default IP address listed on the back. It features a built-in web server for configuring the IP address and serial port baud rate.



The screenshot shows the 'Serial Port Settings' page for Port 1. The left-hand navigation menu is expanded to show 'Port 1' with sub-options for 'Operation Modes' and 'Communication Parameters'. The main content area is titled 'Communication Parameters' and contains the following settings:

- Port 01**
- Port alias**: [Text input field]
- Serial Parameters**
- Baud rate**: 4800 (dropdown)
- Data bits**: 8 (dropdown)
- Stop bits**: 1 (dropdown)
- Parity**: None (dropdown)
- Flow control**: None (dropdown)
- FIFO**:  Disable  Enable
- Interface**: RS-485 2-wire (dropdown)
- Apply the above settings to all serial ports
- Submit** button

Lastly, download the Moxa NPort Com Port Driver. This driver dynamically finds each Moxa NPort and creates each respective com port on the PC.



<http://www.moxa.com/support/DownloadFile.aspx?type=support&id=974>

