

Top 5 InTouch Development Tips

1. Secondary Source

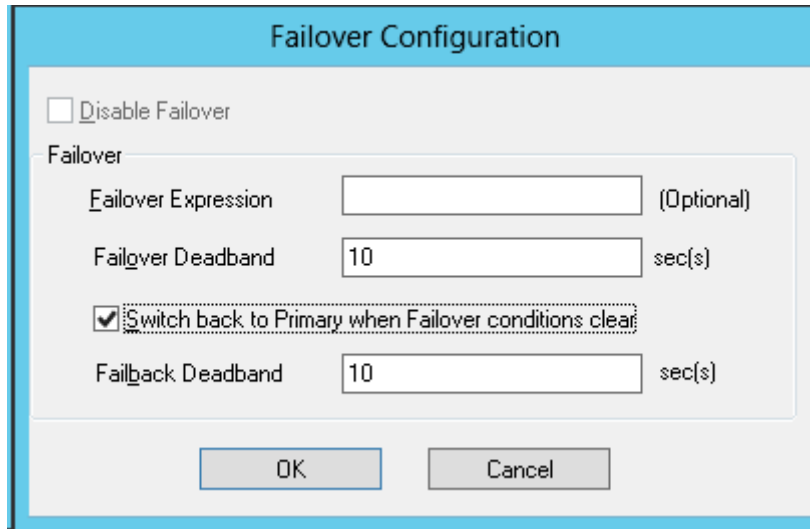
Each access name can be given a secondary source. This results in redundant paths to a PLC. Select Special, Access Names, and choose an access name of your choosing.

The screenshot shows the 'Add Access Name' dialog box. The main section is titled 'Add Access Name' and contains the following fields and options:

- Access:** ge1
- Node Name:** computer1
- Application Name:** server_runtime
- Topic Name:** plc1
- Which protocol to use:** DDE, SuiteLink (selected), Message Exchange
- When to advise server:** Advise all items, Advise only active items (selected)
- Enable Secondary Source** (highlighted with a red box)
- Node Name:** computer2
- Application Name:** server_runtime
- Topic Name:** plc1
- Which protocol to use:** DDE, SuiteLink (selected), Message Exchange
- When to advise server:** Advise all items, Advise only active items (selected)

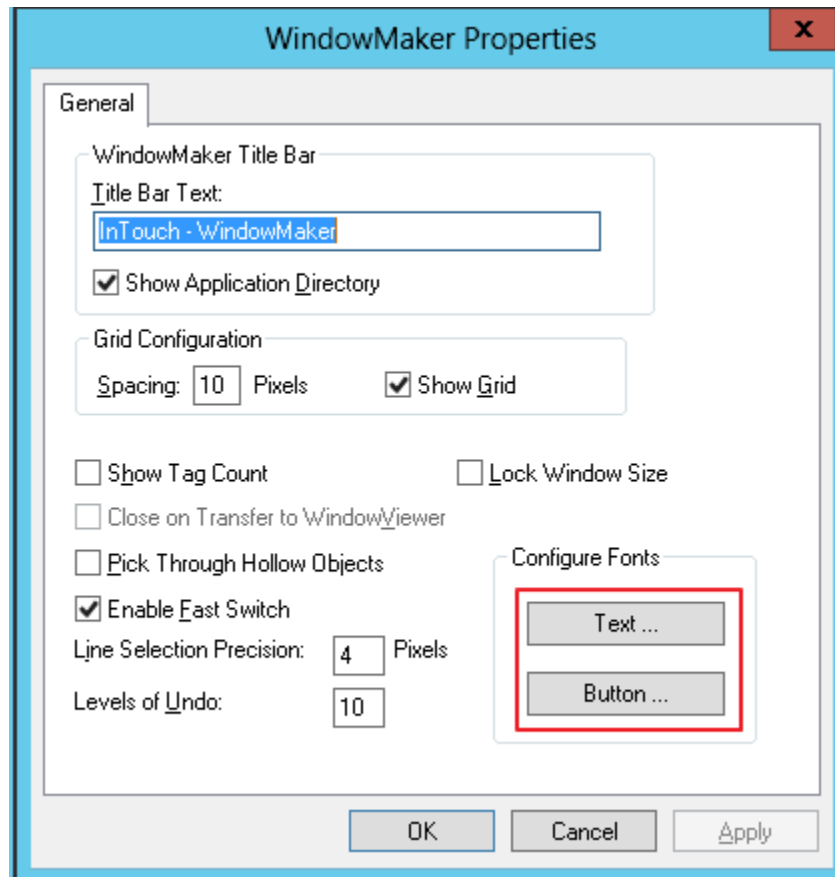
Buttons: OK, Cancel, Failover (highlighted with a red box).

When enabled, the Failover button becomes active which allows the timing between failures to be manipulated. In intermittent networks, it's best to allow an amount of seconds before switching over to the backup.



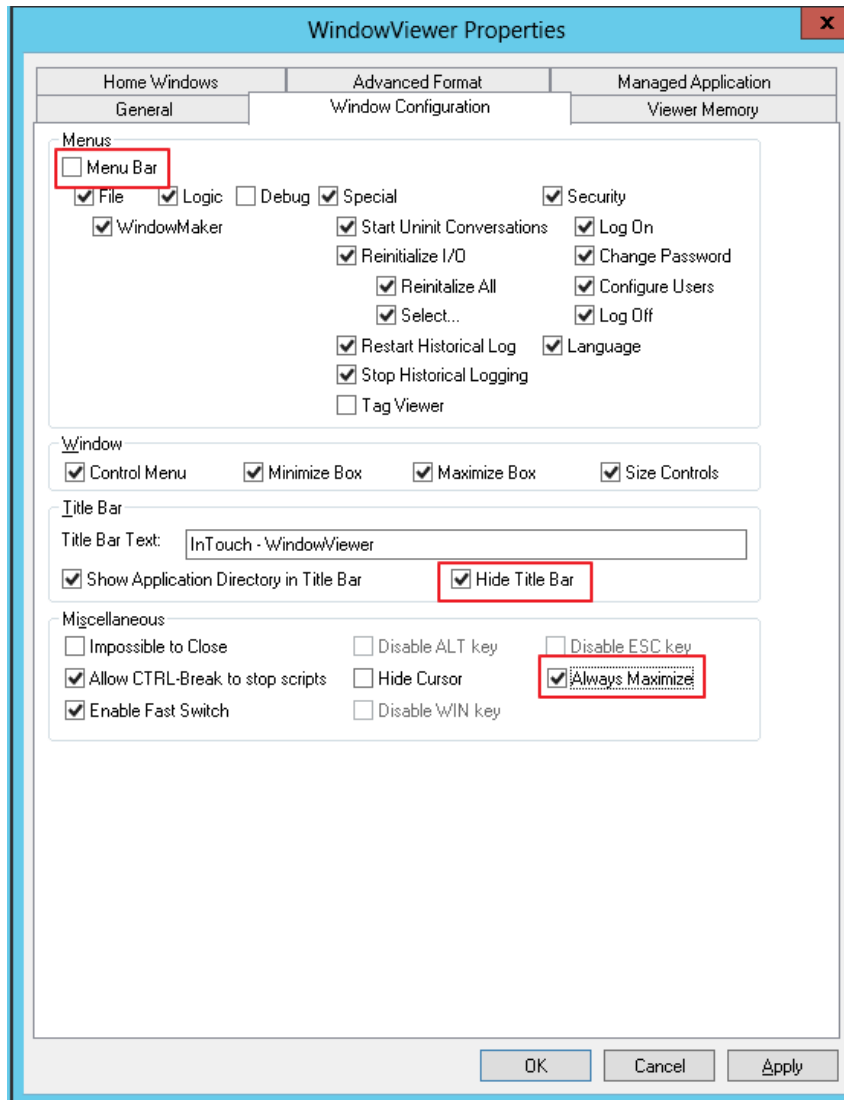
2. Change Default Font Size

Placing text or buttons on your windows can appear with small or unreadable font. Change the default font from Special, Configure, WindowMaker. At the bottom right, select text or button and adjust the settings.



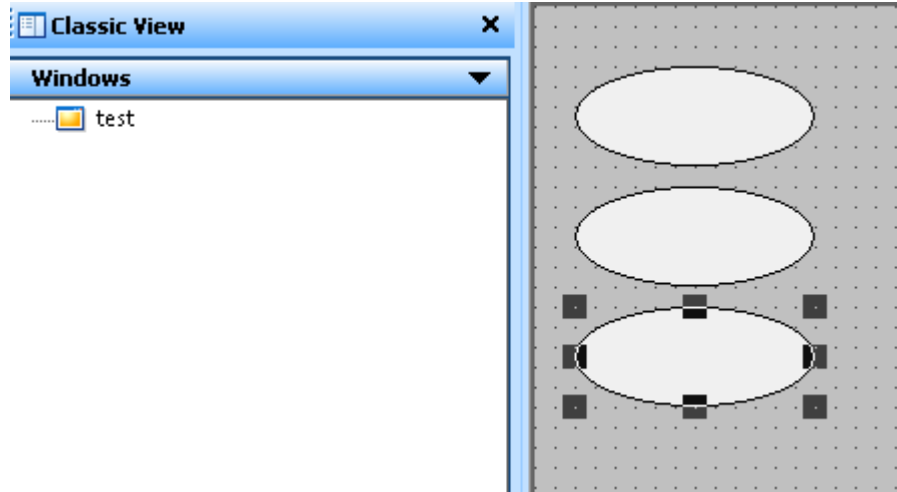
3. True Fullscreen

WindowViewer comes with a titlebar and toolbar constantly showing. This coupled with the Windows Start Menu can make window creation and sizing more difficult. To make the WindowViewer experience truly full screen, go to Special, Configure, WindowViewer, and Window Configuration tab. Uncheck 'Menu Bar', check 'Hide Title Bar', and lastly check 'Always Maximize'.



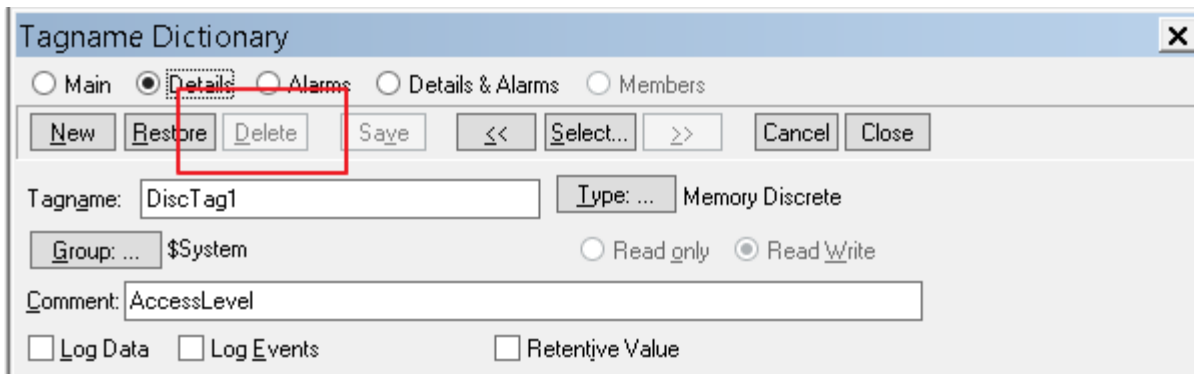
4. Duplicate with a Pattern

Creating duplicates or shapes or elements, it's typically important to keep them in line or at least follow a pattern. After first duplicating, move it immediately to the spot you desire and select duplicate again. Observe and breath a huge sigh of relief.



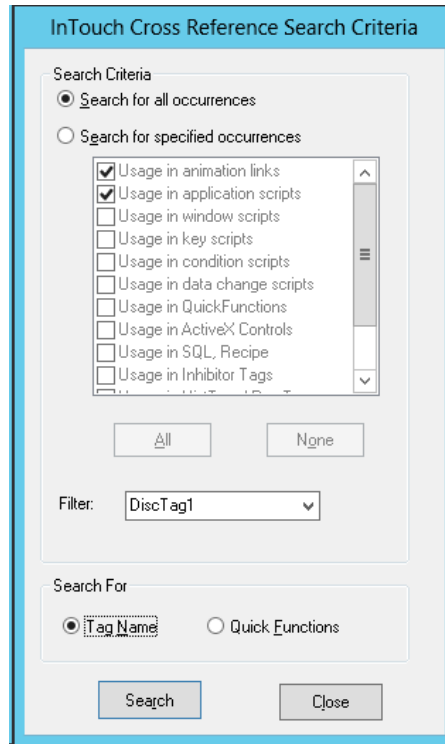
5. Delete Tags

Has this ever been a problem?

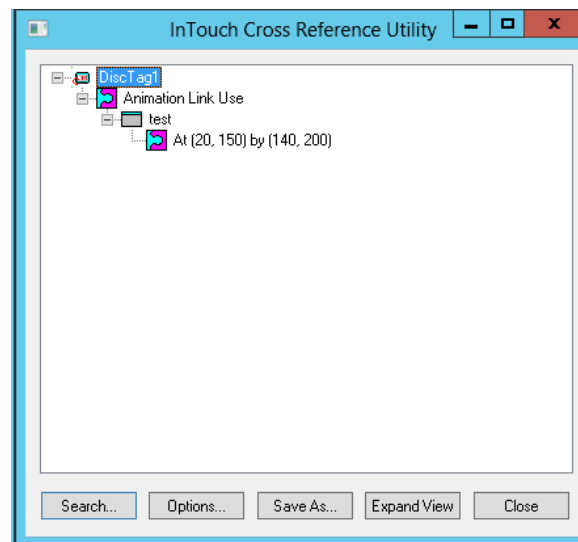


Wonderware has created a particular work flow for a tag to be deleted. If we deleted tags willy nilly, the animations throughout the application would be left orphaned without parents and all alone. No one wants to be alone. Except creepy people who hang out in basements all day.

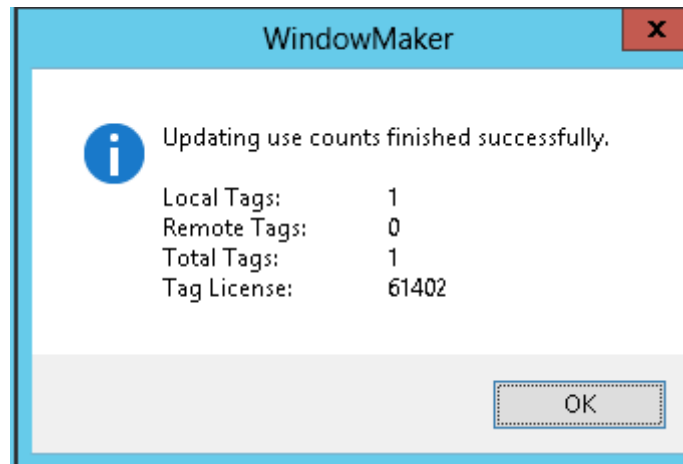
First, run Special, Cross Reference, and search for the tag in question. Leave the default settings.



Delete or replace the tag everywhere it's being used. The resulting cross reference can be saved as a file for later digestion.



After the tag has been taken out of use, select Special, Update Use Counts. This will be the final blow against our rogue tag.



The delete button has now become available.

